

W-1-2

Form 874-9—Revised May, 1918

U. S. Department of Agriculture
FOREST SERVICE

Rooted

Chippewa NATIONAL FOREST

CORNERS OF THE PUBLIC SURVEY

T. *144N* R. *30W* *5th* Mer.

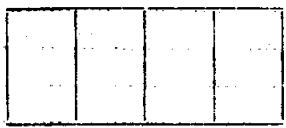
Lat Corner common to Sections
.....,, and *31*

Corner consists of a *Br capped pipe* (not) in place
State condition *good*

Dimensions above ground inches
Sketch grooves, letters, figures, or notches, on proper face or edge.

CARDINAL POSITION

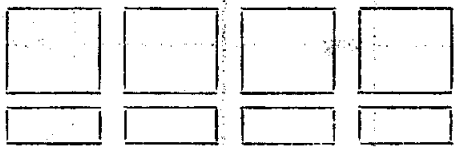
DIAGONAL POSITION



Mound of is located

Pits are located

Sketch markings of Bearing Trees (or Rocks) in proper box and fill blanks below, giving bearings from Corner to Trees and Distances in Links.



Species

Diameter *No Bearing Trees*

Bearing

Distance

Do you believe this to be a genuine Land Office Corner? *Yes*

If not, why?

Dan B. Rose
(Signature)

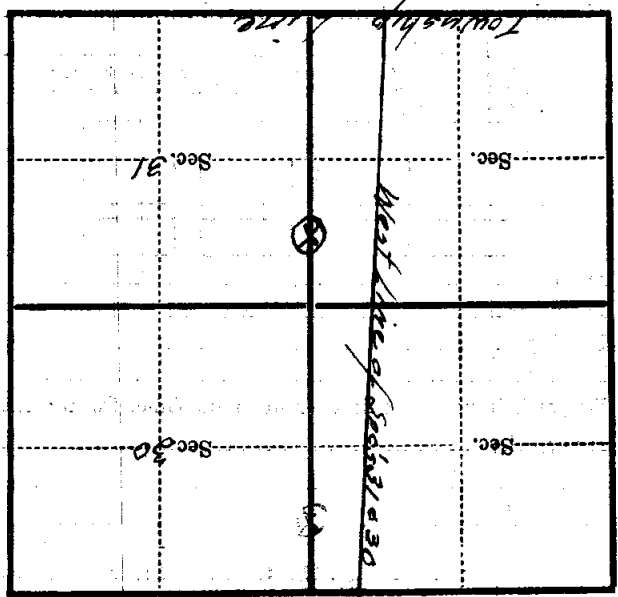
8/22/34
(Date)

COMMISSIONER
(Title)

W-1-2



Metal Location Poster is on a *None* tree *None* inches diameter, on the side of *None* from which this Corner bears *None* chains distant. Give any further facts which will aid in finding this Corner again.



(Make sketch of topography near Corner)