

U-1-2

Form 874-9—Revised May, 1918

U. S. Department of Agriculture  
FOREST SERVICE

*Posted*

*Chippewa* NATIONAL FOREST

CORNERS OF THE PUBLIC SURVEY

T. *144N* R. *30W* *5th* Mer.

*Lot* Corner common to Sections  
and *30*.

Corner consists of a *Scraped pipe 1"* (rod) in place  
State condition *Good*

Dimensions above ground *2"* inches  
Sketch grooves, letters, figures, or notches, on proper face or edge.

CARDINAL POSITION

DIAGONAL POSITION



N W S E

NW SW SE NE

Mound of \_\_\_\_\_ is located \_\_\_\_\_

Pits are located \_\_\_\_\_

Sketch markings of Bearing Trees (or Rocks) in proper box and  
fill blanks below, giving bearings from Corner to Trees and  
Distances in Links.


Species \_\_\_\_\_

Diameter *No* \_\_\_\_\_

Bearing *Bearing Trees* \_\_\_\_\_

Distance \_\_\_\_\_

Do you believe this to be a genuine Land Office Corner? ...

If not, why? \_\_\_\_\_

*Sam B. Rose*

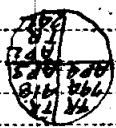
(Signature)

*COMPASSMAN*

(Title)

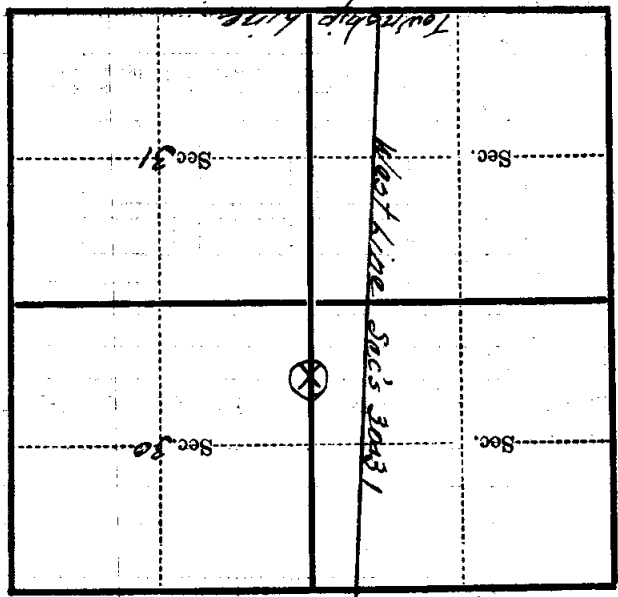
*8/22/34*  
(Date)

U-1-2



Corner again.

Give any further facts which will aid in finding this  
 ..... chains distant.  
 from which this Corner bears .....  
 side of .....  
 tree ..... inches diameter, on the  
 Metal Location Poster is on a *None.*



(Make sketch of topography near Corner)