

U. S. Department of Agriculture
FOREST SERVICE

Posted

Chipawa NATIONAL FOREST
CORNERS OF THE PUBLIC SURVEY

T. 144N R. 30W 5th Mer.

Lot Corner common to Sections
30, and 19.

Corner consists of a Brcap pipe 1" (not) in place
State condition good

Dimensions above ground 2" inches

Sketch grooves, letters, figures, or notches, on proper face or edge.

CARDINAL POSITION

DIAGONAL POSITION

N	W	S	E

NW	SW	SE	NE

Mound of _____ is located _____

Pits are located _____

Sketch markings of Bearing Trees (or Rocks) in proper box and fill blanks below, giving bearings from Corner to Trees and Distances in Links.

$\frac{1}{16}$ 370	$\frac{1}{16}$ 380		
B.T.	B.T.		

Species R. Oak Basswood

Diameter 10" 12"

Bearing S9°15'E S88°45'W

Distance 48 $\frac{3}{4}$ 59 $\frac{3}{4}$

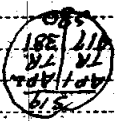
Do you believe this to be a genuine Land Office Corner? Yes.

If not, why? _____

Wm. D. Rose
(Signature)

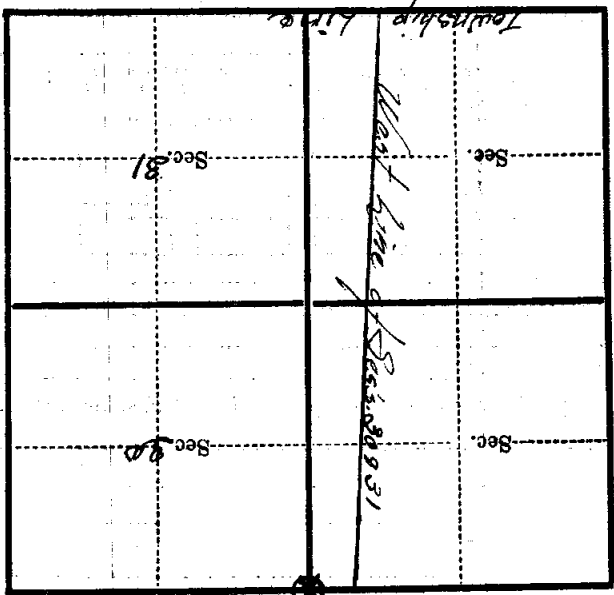
Compassman
(Title)

8/23/34
(Date)



Corner again.

Give any further facts which will aid in finding this
 chains distant.
 from which this Corner bears
 side of
 tree inches diameter, on the
 Metal Location Poster is on a *None*



(Make sketch of topography near Corner)

T. 144. N. R. 30W. 5th Mer. R-1-2