

R-15

U. S. Department of Agriculture

FOREST SERVICE

posted
R-15

Chippewa NATIONAL FOREST

CORNERS OF THE PUBLIC SURVEY

T. 144 N R. 30 W 5 Mer.

1/4 Corner common to Sections

26, 27, and 27

Corner consists of a Metal post (not) in place

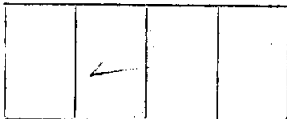
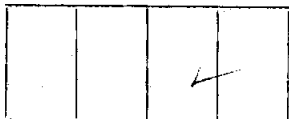
State condition good

Dimensions above ground 12 inches.

Sketch grooves, letters, figures, or notches, on proper face or edge.

CARDINAL POSITION

DIAGONAL POSITION



N W S E

NW SW SE NE

Mound of ✓ is located

✓ Pits are located

Sketch markings of Bearing Trees (or Rocks) in proper box and fill blanks below, giving bearings from Corner to Trees and Distances in Links.

T100 N
R 30 W
1/4 S 22

T100 N
R 30 W
1/4 S 27

--

--

B.T.

B.T.

--

--

Species Maple R. Oak

Diameter 7" 19"

Bearing N 67° E S 27° E

Distance 25' 25'

Do you believe this to be a genuine Land Office Corner? ✓

If not, why?

George Keyes
(Signature)

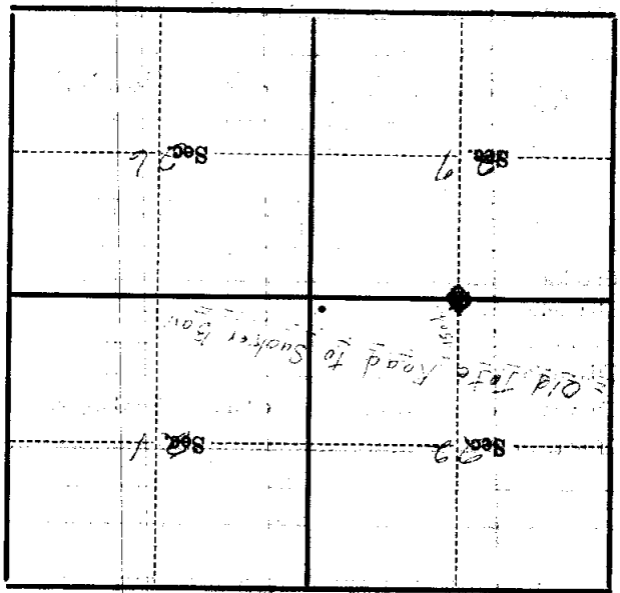
Nov. 17, 1931
(Date)

Estimator
(Title)

R-15

Corner again.
Corner 15 of Section 22
Section 22, T. 14 N., R. 30 W.,
S. 7 E., Mer. 15

Metal Location Poster is on a
tree --- inches diameter, on the
side of ---
from which this Corner bears
--- chains distant.
Give any further facts which will aid in finding this



(Make sketch of topography near Corner)

T. 14 N. R. 30 W. S. 7 E. Mer. 15
R-15