

U. S. Department of Agriculture

FOREST SERVICE

posted A7

Chippewa NATIONAL FOREST

CORNERS OF THE PUBLIC SURVEY

T. 144N R. 30W S 4 Mer.

Quarter Corner common to Sections

5 and

Corner consists of a Metal pipe (not) in place

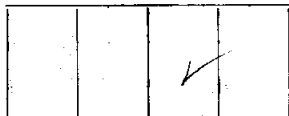
State condition good

Dimensions above ground 12 inches.

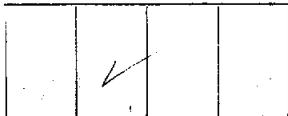
Sketch grooves, letters, figures, or notches, on proper face or edge.

CARDINAL POSITION

DIAGONAL POSITION



N W S E



NW SW SE NE

Mound of K is located

Pits are located

Sketch markings of Bearing Trees (or Rocks) in proper box and fill blanks below, giving bearings from Corner to Trees and Distances in Links.

T 144N
R 30W
S 5

T 144N
R 30W
S 5

B. T.

B. T.

Species Oak Oak

Diameter 10" 10"

Bearing S 40° W S 55° E

Distance 7' 5'

Do you believe this to be a genuine Land Office Corner? Yes

If not, why?

Signature

(Signature)

Estimator

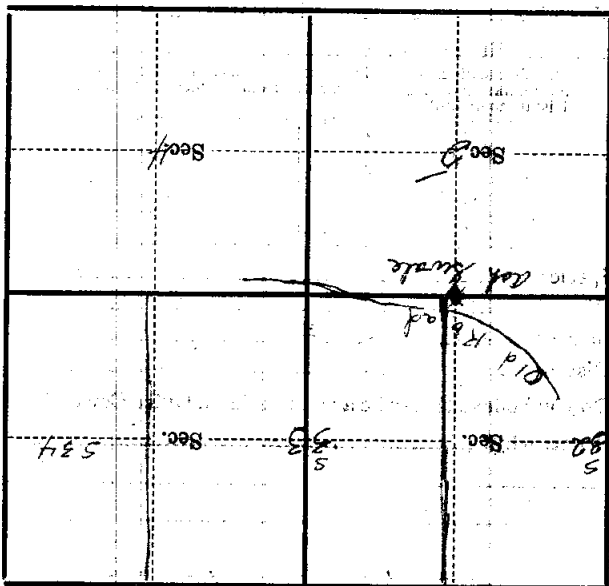
(Title)

Nov 14, 1933

(Date)

Corner again.
The corner is at the NW
corner of the section
containing sections 32 + 33
T 145 N., R 30 W - S 2m

Metal Location Poster is on a
tree _____ inches diameter, on the
side of _____
from which this Corner bears _____
obains distant _____
Give any further facts which will aid in finding this



(Make sketch of topography near Corner)

T. 145 N. R. 30 W. S. 2m