

U. S. Department of Agriculture  
FOREST SERVICE

*Posted*

*Chippewa* NATIONAL FOREST

J3

CORNERS OF THE PUBLIC SURVEY

T. *144N* R. *300W* *5th* Mer.

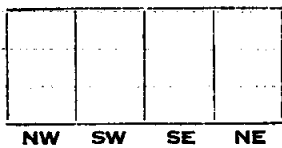
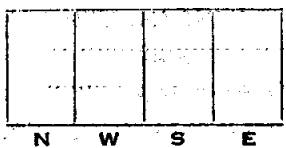
*1/4* Corner common to Sections  
*17*, and *18*.

Corner consists of a *excavated 1"* (net) in place  
State condition *good*

Dimensions above ground *7"* inches  
Sketch grooves, letters, figures, or notches, on proper face or edge.

CARDINAL POSITION

DIAGONAL POSITION



Mound of \_\_\_\_\_ is located \_\_\_\_\_

Pits are located \_\_\_\_\_

Sketch markings of Bearing Trees (or Rocks) in proper box and fill blanks below, giving bearings from Corner to Trees and Distances in Links.

<i>1/4</i> <i>57</i>	<i>1/4</i> <i>318</i>		
<i>B.T.</i>	<i>B.T.</i>		

Species *Ash* *Aspen*

Diameter *12"* *12"*

Bearing *N70 1/4 W* *S40 1/4 W*

Distance *52* *38 1/4*

Do you believe this to be a genuine Land Office Corner? *Yes.*

If not, why? \_\_\_\_\_

*David B. Rose*  
(Signature)

*9/4/34*  
(Date)

*COMPASSMAN*  
(Title)

157  
19518

Corner again.

Give any further facts which will aid in finding this

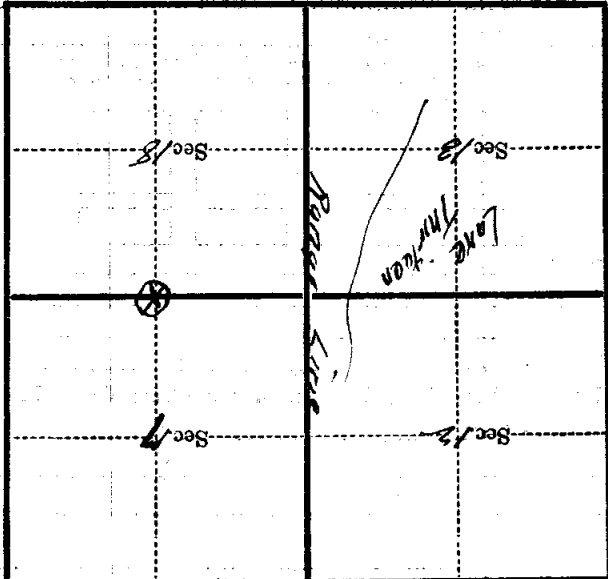
38 1/4  
feet  
distant.

from which this Corner bears N40°5'E

side of ~~the~~

tree 12 inches diameter, on the NE

Metal Location Poster is on a Aspen B.T.



(Make sketch of topography near Corner)