

J-1

U. S. Department of Agriculture
FOREST SERVICE

Pasted
51

Chippewa NATIONAL FOREST
CORNERS OF THE PUBLIC SURVEY

T. 144N R. 30481W 5th Mer.

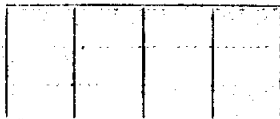
Section Corner common to Sections
12, 13, 17, and 18.

Corner consists of a Brickment 6" (not) in place
State condition good

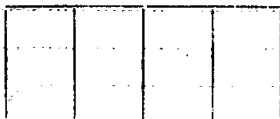
Dimensions above ground 2" inches
Sketch grooves, letters, figures, or notches, on proper face or edge.

CARDINAL POSITION

DIAGONAL POSITION



N W S E



NW SW SE NE

Mound of _____ is located _____

Pits are located _____

Sketch markings of Bearing Trees (or Rocks) in proper box and fill blanks below, giving bearings from Corner to Trees and Distances in Links.

| | | | |
|---------|---------|---------|-------------------|
| S 12 | S 17 | S 18 | Fallen S 13 |
| B.T. | B.T. | B.T. | B.T. |

| | | | |
|----------|----------------------|--------------------|--------------------|
| Species | <u>Norway Spruce</u> | <u>Aspen</u> | <u>W. Pine</u> |
| Diameter | <u>18"</u> | <u>18"</u> | <u>22"</u> |
| Bearing | <u>N 73 1/4° W</u> | <u>N 21 3/4° E</u> | <u>S 79 1/4° W</u> |
| Distance | <u>57</u> | <u>95</u> | <u>99</u> |

Do you believe this to be a genuine Land Office Corner? yes.

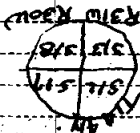
If not, why? _____

Dan B. Rose
(Signature)

8/21/34
(Date)

compassman
(Title)

J-1



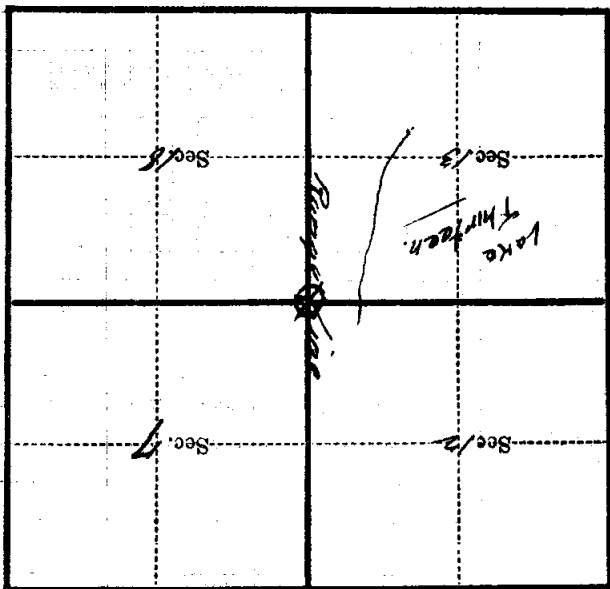
Corner again.

Give any further facts which will aid in finding this

from which this Corner bears 134° ^W _{about} distant.

side of *the tree*. *South 70 East*

Metal Location Poster is on a *Aspen* tree $5''$ inches diameter, on the *South East*



(Make sketch of topography near Corner)

T. 194N. R. 30031W

5th Mer.

21