

Form 874-9—Revised May, 1918
U. S. Department of Agriculture
FOREST SERVICE

already posted

Chippewa NATIONAL FOREST
CORNERS OF THE PUBLIC SURVEY

T. 144N R. 29W 5th Mer.

section Corner common to Sections
1, 6, 7, and 12

Corner consists of a 1.00 pipe (not) in place
State condition good

Dimensions above ground 12 inches

Sketch grooves, letters, figures, or notches, on proper face or edge.

CARDINAL POSITION

DIAGONAL POSITION

N	W	S	E

NW	SW	SE	NE

Mound of _____ is located _____

Pits are located _____

Sketch markings of Bearing Trees (or Rocks) in proper box and fill blanks below, giving bearings from Corner to Trees and Distances in Links.

<i>Forest Service Poster</i>			
<i>B.T.</i>	<i>7144</i>	<i>729+R2K</i>	

Species N.P.

Diameter 2 1/2"

Bearing N-NW

Distance 300' N 2 chs. W

Do you believe this to be a genuine Land Office Corner? yes

If not, why? _____

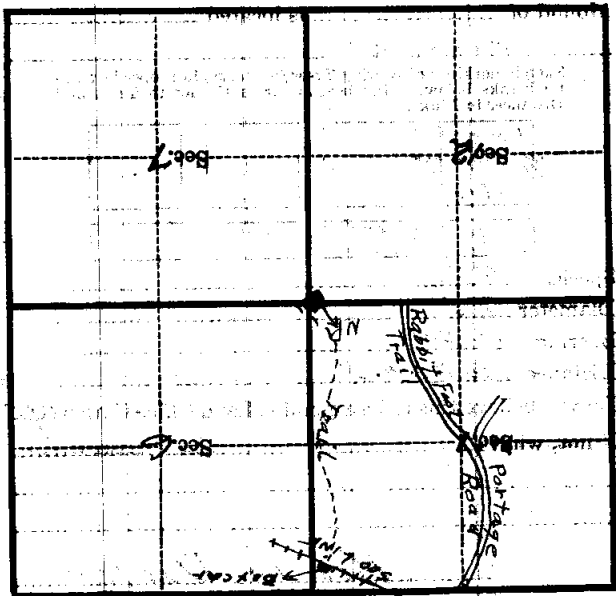
Max von Dahlen
(Signature)

Tech. Foreman
(Title)

1/16/34
(Date)

Corner again.
 Corner is in a swamp, it can be found by walking down Portage Lake Road to Soekins R.R. X then take tracks E-SE to Box 200. Follow trail south indicated on Map above leading to NW Pine Blk. From where U.S. G.L.O.S. Sec. Cor. can be found by walking South into swamp.

Give any further facts which will aid in finding this
 300 yards or more distant.
 from which this Corner bears E 3/4 E 1/4 East & side of said Norway Pine tree 2 1/2 inches diameter, on the East. Metal Location Poster is on a Norway Pine



(Make sketch of topography near Corner)

T. 144 N. R. 29 W. 5 Mer.

U. S. Department of Agriculture
FOREST SERVICE

Chippewa NATIONAL FOREST

123

CORNERS OF THE PUBLIC SURVEY

T. 144 N R. 29 W Mer.

Section 1, 6, 12, and 7
Corner common to Sections

Corner consists of a iron pipe (not) in place
State condition Good

Dimensions above ground 12" high inches

Sketch grooves, letters, figures, or notches, on proper face or edge.

CARDINAL POSITION

DIAGONAL POSITION



Mound of _____ is located _____

Pits are located _____

Sketch markings of Bearing Trees (or Rocks) in proper box and fill blanks below, giving bearings from Corner to Trees and Distances in Links.

Species Norway Pine

Diameter 15"

Bearing N90E

Distance 4.04ch

Do you believe this to be a genuine Land Office Corner? Yes

If not, why? _____

H. HANSON
(Signature)

1/15/36.
(Date)

(Title)

Corner again.

Give any further facts which will aid in finding this

chains distant.

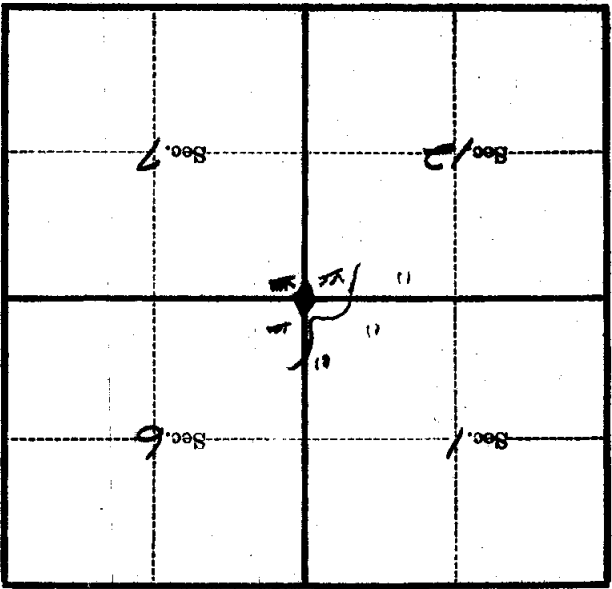
from which this Corner bears *59° E*

4.04

side of *Trees*

tree *15* inches diameter, on the *South*

Metal Location Poster is on a *Norway*



(Make sketch of topography near Corner)

T. 144N R. 29W
E-25 Mer.

FOREST SERVICE

Chippewa NATIONAL FOREST

CORNERS OF THE PUBLIC SURVEY

T. 144 N R. 29 W 5th Mer.

Section Corner common to Sections

1, 6, 7 and 12

Corner consists of a 1200 p.p.s. (not) in place

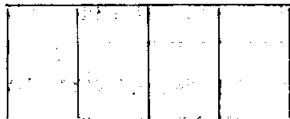
State condition good

Dimensions above ground 12 inches.

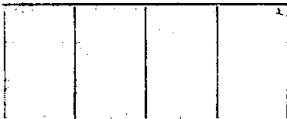
Sketch grooves, letters, figures, or notches, on proper face or edge.

CARDINAL POSITION

DIAGONAL POSITION



N W S E



NW SW SE NE

Mound of is located

Pits are located

Sketch markings of Bearing Trees (or Rocks) in proper box and fill blanks below, giving bearings from Corner to Trees and Distances in Links.

Forest Service Potter

B.T. -> T144 R29+R28

Species NP

Diameter 2.8"

Bearing N-NW

Distance 300' N 2 ch W.

Do you believe this to be a genuine Land Office Corner? Yes

If not, why?

W. von Baller

Jan 16th 34 Tech. Foreman

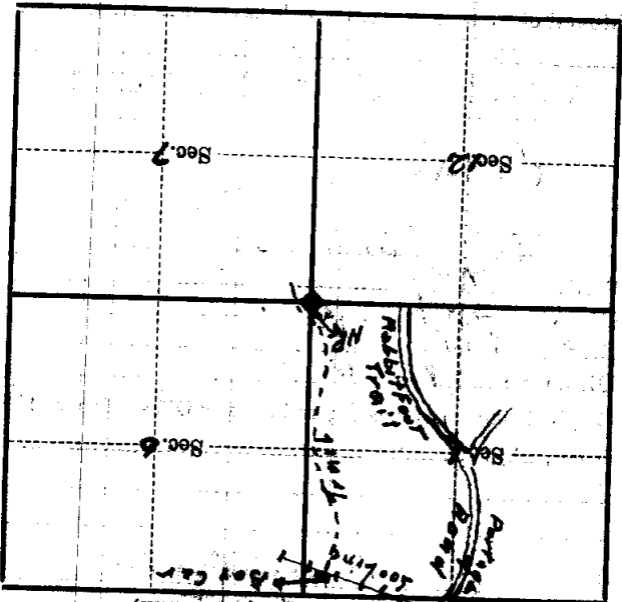
(Date)

(Title)

Corner again.
 Corner is in a swamp, if can
 be found by walking down Parage
 Lake Road to 500 line R.R. X then take
 tracks ESE to Box Car + follow trail south
 indicate on Map above leading to
 NW 1/4 B.T. from where U.S. G.S. Sec.
 Corn can be found by walking south
 to swamp.

Metal Location Poster is on a Norway Pine
 tree 28 inches diameter, on the East
 side of said Norway Pine
 from which this Corner bears 2 chains East +
 300' South 170' distant.

Give any further facts which will aid in finding this



Sketch of topography near Corner

T. 144 N. R. 29 W. Mer. 8:25