

U. S. DEPARTMENT OF AGRICULTURE  
FOREST SERVICE

*posted*

Chippewa NATIONAL FOREST

CORNERS OF THE PUBLIC SURVEY

T. 144N R. 29W 5<sup>th</sup> Mer.

1/16 Corner common to Sections

1, 8, 2, and

Corner consists of a Iron disk - brass (not) in place

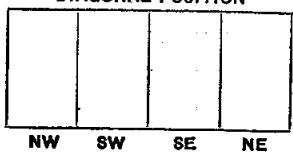
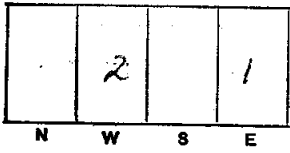
State condition good

Dimensions above ground 12 inches.

Sketch grooves, letters, figures, or notches, on proper face or edge.

CARDINAL POSITION

DIAGONAL POSITION



Mound of \_\_\_\_\_ is located \_\_\_\_\_

Pits are located \_\_\_\_\_

Sketch markings of Bearing Trees (or Rocks) in proper box and fill blanks below, giving bearings from Corner to Trees and Distances in Links.

|              |              |  |  |
|--------------|--------------|--|--|
| N 4/16<br>52 | N 4/16<br>51 |  |  |
| BT           | BT           |  |  |

|          |                |                |  |  |
|----------|----------------|----------------|--|--|
| Species  | <u>J. Pine</u> | <u>N. Pine</u> |  |  |
| Diameter | <u>6"</u>      | <u>5"</u>      |  |  |
| Bearing  | <u>S80W</u>    | <u>E</u>       |  |  |
| Distance | <u>25'</u>     | <u>25'</u>     |  |  |

Do you believe this to be a genuine Land Office Corner? Yes

If not, why? \_\_\_\_\_

O. R. Boerner

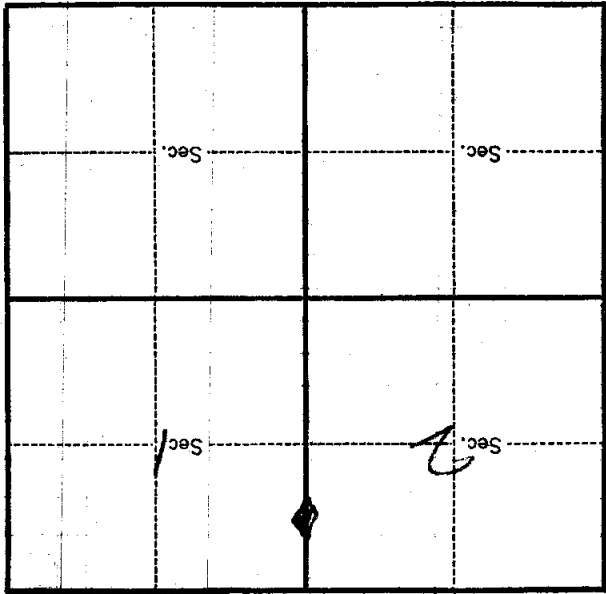
Signature  
Estimator

1/1/31  
Date.

T. 144N. R. 29W. Mer. 5

8-3027

(Make sketch of topography near Corner.)



Metal Location Poster is on a

tree \_\_\_\_\_ inches diameter, on the

side of

from which this Corner bears

\_\_\_\_\_ chains distant.

Give any further facts which will aid in finding this

Corner again.

*On new post of A. J. Hill*