

U. S. Department of Agriculture  
FOREST SERVICE

*Chippewa* NATIONAL FOREST  
CORNERS OF THE PUBLIC SURVEY

T. 144 R. 29 Mer.

1/16 Corner common to Sections

14, and

Corner consists of a From PIPE (not) in place

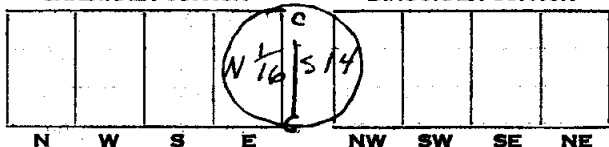
State condition

Dimensions above ground \_\_\_\_\_ inches

Sketch grooves, letters, figures, or notches, on proper face or edge.

CARDINAL POSITION

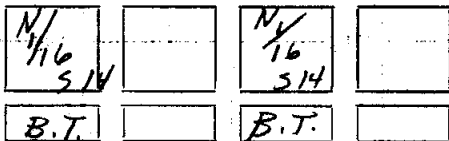
DIAGONAL POSITION



Mound of \_\_\_\_\_ is located :

Pits are located \_\_\_\_\_

Sketch markings of Bearing Trees (or Rocks) in proper box and fill blanks below, giving bearings from Corner to Trees and Distances in Links.



Species Balsam Elm

Diameter 12 in 9 in

Bearing S 87° E S 77° W

Distance 47 links 30 links

Do you believe this to be a genuine Land Office Corner? Yes

If not, why? \_\_\_\_\_

Friesen

(Signature)

1/14/36

(Date)

(Title) K-19

Section 21

Section 21

Section 21

CORNER OF THE PUBLIC SURVEY

Other again. Give any further facts which will aid in finding this

Corner location

from which this Corner bears

S. 71° E

side of

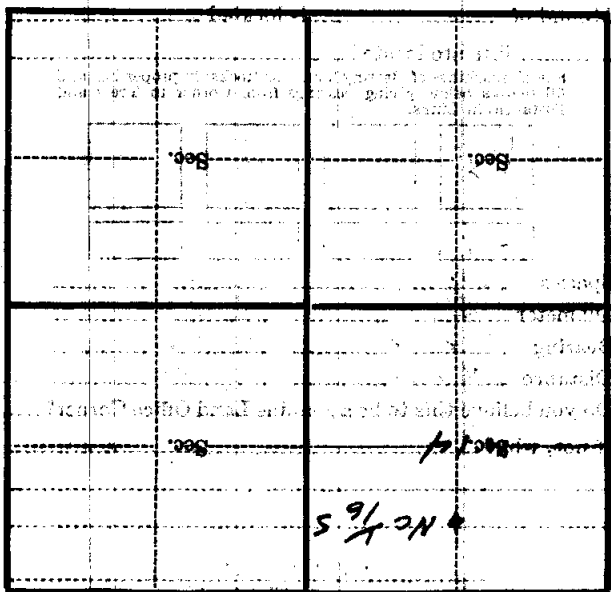
Tree

tree 7 inches diameter, on the East

East

Metal Location Poster is on a

BRASSWOOD



(Make sketch of topography near Corner)

NATIONAL FOREST

122

CORNERS OF THE PUBLIC SURVEY

T. 144 R. 29 Mer.

1/16 Corner common to Sections

14, and

Corner consists of a Iron pipe (not) in place

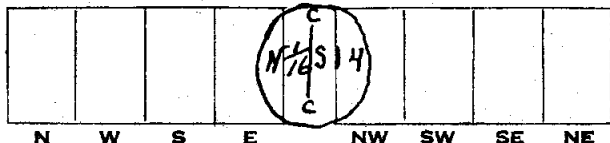
State condition

Dimensions above ground \_\_\_\_\_ inches

Sketch grooves, letters, figures, or notches, on proper face or edge.

CARDINAL POSITION

DIAGONAL POSITION



Mound of \_\_\_\_\_ is located \_\_\_\_\_

Pits are located \_\_\_\_\_

Sketch markings of Bearing Trees (or Rocks) in proper box and fill blanks below, giving bearings from Corner to Trees and Distances in Links.

N 1/16 S 14		N 1/16 S 14	
B.T.		B.T.	

Species Balsam Elm

Diameter 12 in. 9 in.

Bearing S 87 E S 77 W

Distance 47 lks. 30 lks.

Do you believe this to be a genuine Land Office Corner? yes

If not, why? \_\_\_\_\_

Friesert

(Signature)

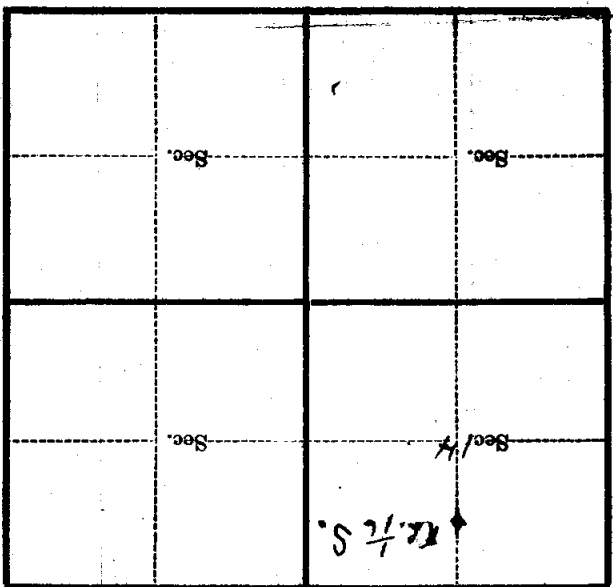
1/14/36

(Date)

(Title)

Metal Location Poster is on a ~~EM~~ base road  
 tree 7 inches diameter, on the East  
 side of T&E  
 from which this Corner bears S 71° E  
 0.06 chains distant.  
 Give any further facts which will aid in finding this  
 Corner again.

6-23-11  
5710-2  
Almonson - from 5710-2



(Make sketch of topography near Corner)

U. S. DEPARTMENT OF AGRICULTURE  
FOREST SERVICE

*posted*

Chippewa NATIONAL FOREST

CORNERS OF THE PUBLIC SURVEY

T. 144N R. 24W 5th Mer.

416 Corner common to Sections  
14, \_\_\_\_\_, \_\_\_\_\_, and \_\_\_\_\_

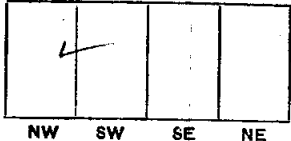
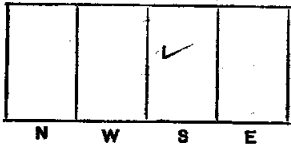
Corner consists of a iron stake - Brass Cap (not) in place  
State condition good

Dimensions above ground 12 inches.

Sketch grooves, letters, figures, or notches, on proper face or edge.

CARDINAL POSITION

DIAGONAL POSITION



Mound of \_\_\_\_\_ is located \_\_\_\_\_

Pits are located \_\_\_\_\_

Sketch markings of Bearing Trees (or Rocks) in proper box and fill blanks below, giving bearings from Corner to Trees and Distances in Links.

<u>CN</u> <u>416</u> <u>314</u>	<u>N46</u> <u>S14</u>		
---------------------------------------	--------------------------	--	--

<u>BT</u>	<u>BT</u>		
-----------	-----------	--	--

Species Elm Balm  
Diameter 10 12  
Bearing S70W S66E  
Distance 20' 30'

Do you believe this to be a genuine Land Office Corner? Yes

If not, why? \_\_\_\_\_

D. R. Brewer

Signature

Reliator

12/17/30  
Date

Title

Metal Location Poster is on a \_\_\_\_\_  
 tree \_\_\_\_\_ inches diameter, on the \_\_\_\_\_  
 side of \_\_\_\_\_  
 from which this Corner bears \_\_\_\_\_  
 \_\_\_\_\_ chains distant.  
 Give any further facts which will aid in finding this  
 Corner again.

	Sec.	Sec.	
	Sec.	Sec. 17	

8-3027 (Make sketch of topography near Corner.)

T. 144N R. 29W  
 Mer. K-19