

U. S. Department of Agriculture
FOREST SERVICE

*copied
Revised
5/6*

..... NATIONAL FOREST

CORNERS OF THE PUBLIC SURVEY

T. 144 R. 29 5 Mer.

14 Corner common to Sections

.....,, 2, and 2

Corner consists of a Cedar Post (not) in place

State condition

Dimensions above ground inches

Sketch grooves, letters, figures, or notches, on proper face or edge.

CARDINAL POSITION

DIAGONAL POSITION

--	--	--	--

--	--	--	--

N W S E

NW SW SE NE

Mound of is located

..... Pits are located

Sketch markings of Bearing Trees (or Rocks) in proper box and fill blanks below, giving bearings from Corner to Trees and Distances in Links.

Species

Diameter

Bearing

Distance

Do you believe ~~this~~ to be a genuine Land Office Corner?

If not, why?

.....

.....

(Signature)

(Date)

(Title)

A-17

Blank lined area for notes at the top of the page.

One section 6 T. 20" 27 21 W.

Corner again.
Give any further facts which will aid in finding this
chain distant
from which this Corner bears
side of
tree inches diameter, on the
Metal Location Poster is on a

	Sec. 3		Sec. 3
	Sec. 3		Sec. 3

(Make sketch of topography near Corner)

Form 874-9—Revised May, 1918
U. S. Department of Agriculture
FOREST SERVICE

*Copied
Postal
7/6*

NATIONAL FOREST
CORNERS OF THE PUBLIC SURVEY

T. 144 R. 29 S. 5 Mer.

Corner common to Sections

_____, _____, 2, and 3

Corner consists of a 3" Oak stake (not) in place

State condition _____

Dimensions above ground _____ inches

Sketch grooves, letters, figures, or notches, on proper face or edge.

CARDINAL POSITION

DIAGONAL POSITION

--	--	--	--

N W S E

--	--	--	--

NW SW SE NE

Mound of _____ is located _____

Pits are located _____

Sketch markings of Bearing Trees (or Rocks) in proper box and fill blanks below, giving bearings from Corner to Trees and Distances in Links.

Species _____

Diameter _____

Bearing _____

Distance _____

Do you believe this to be a genuine Land Office Corner? _____

If not, why? _____

(Signature) _____

(Date) _____

(Title) _____

UNITED STATES DEPARTMENT OF THE INTERIOR

BUREAU OF LAND MANAGEMENT

SECTION 16

SECTION 16, T. 12 N., R. 12 E., MER.

No. 8, 1, on Sec. 2

Showing "L" markers on Sec. 3

Corner again.

Give any further facts which will aid in finding this

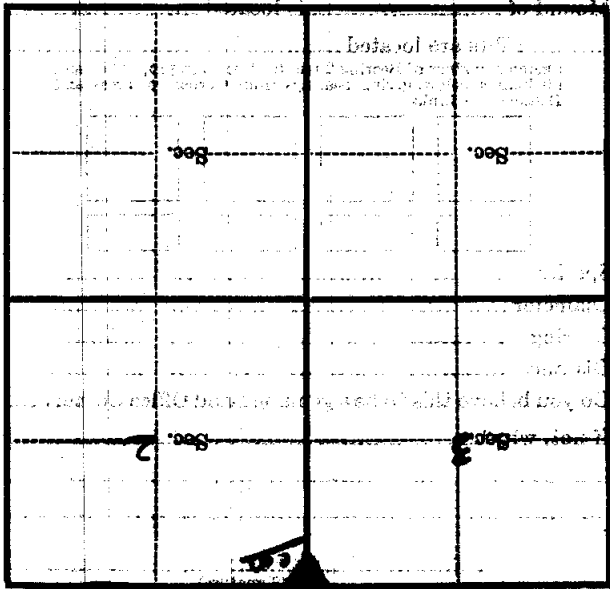
chain distant.

from which this Corner bears

side of

three inches diameter, on the

Metal Location Poster is on a



(Make sketch of topography near Corner)

checky
Posted

U. S. Department of Agriculture
FOREST SERVICE

Chippewa NATIONAL FOREST

CORNERS OF THE PUBLIC SURVEY

T. 144 N. R. 29 W. 5th Mer.

Section Corner common to Sections

2, and 3

Corner consists of a iron pipe (not) in place

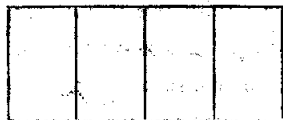
State condition good

Dimensions above ground 12" x 1.5" inches

Sketch grooves, letters, figures, or notches, on proper face or edge.

CARDINAL POSITION

DIAGONAL POSITION



N W S E



NW SW SE NE

Mound of _____ is located _____

Pits are located _____

Sketch markings of Bearing Trees (or Rocks) in proper box and fill blanks below, giving bearings from Corner to Trees and Distances in Links.

CC
T 144 N
R 29 W
S 3

BT

Species N. Pine

Diameter 36"

Bearing S 86 W

Distance 33 chs

Do you believe this to be a genuine Land Office Corner? Yes

If not, why? _____

E. M. Handy

(Signature)

C. O. P.

(Date)

(Title)

CORNER OF THE PUBLIC SURVEY
 SECTION 3
 T. 14 N. R. 89 W. S. 5
 MONTANA
 DISTRICT OF MONTANA
 FOREST SERVICE

Metal Location Poster is on a
 tree 4" inches diameter, on the
 side of said tree
 from which this Corner bears
 S 86 W
 53 chains distant.
 Give any further facts which will aid in finding this
 Corner again.

<p>See.</p>	<p>See.</p>	<p>See.</p>	<p>See.</p>
<p>See. 2</p>	<p>See. 3</p>	<p>See. 3</p>	<p>See. 3</p>

(Make sketch of topography near Corner)

*Handy
Posted*

U. S. Department of Agriculture
FOREST SERVICE

Chippewa NATIONAL FOREST

CORNERS OF THE PUBLIC SURVEY

T. 144 R. 29 5 Mer.

section Corner common to Sections

2, and 3

Corner consists of a Iron pipe (not) in place

State condition Good

Dimensions above ground 12" inches

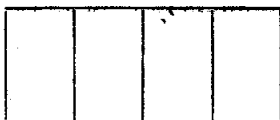
Sketch grooves, letters, figures, or notches, on proper face or edge.

CARDINAL POSITION

DIAGONAL POSITION



N W S E

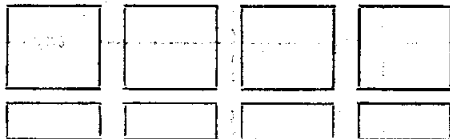


NW SW SE NE

Mound of _____ is located _____

Pits are located _____

Sketch markings of Bearing Trees (or Rocks) in proper box and fill blanks below, giving bearings from Corner to Trees and Distances in Links.



Species N.P.

Diameter 3 1/2"

Bearing S 86 W

Distance 33 ch.

Do you believe this to be a genuine Land Office Corner? yes

If not, why? _____

E. M. Handy

(Signature)

C. O. P.

(Date)

(Title)

2. Location of the corner

Corner again

Corner again

Corner again

Corner again

Give any further facts which will aid in finding this

chain distant

from which this corner bears

N 1/2 W

side of

tree 4" inches diameter, on the

Metal Location Poster is on a *Aspen*

<p>Sec. 1</p>	<p>Sec. 2</p>
<p>Sec. 3</p>	<p>Sec. 4</p>

(Make sketch of topography near corner)

A-17
123

U. S. Department of Agriculture
FOREST SERVICE

Chippewa NATIONAL FOREST

CORNERS OF THE PUBLIC SURVEY

T. 144 N. R. 29 W. 5 th. Mer.

section Corner common to Sections

2, and 3

Corner consists of a iron pipe (not) in place

State condition good

Dimensions above ground 12" X 1.5" inches

Sketch grooves, letters, figures, or notches, on proper face or edge.

CARDINAL POSITION

DIAGONAL POSITION

--	--	--	--

N W S E

--	--	--	--

NW SW SE NE

Mound of is located

Pits are located

Sketch markings of Bearing Trees (or Rocks) in proper box and fill blanks below, giving bearings from Corner to Trees and Distances in Links.

100 100 29 S 3			
BT			

Species N pine

Diameter 36 "

Bearing S 86 W

Distance .33 chs.

Do you believe this to be a genuine Land Office Corner? Yes

If not, why?

E. M. Handy
Chief of party

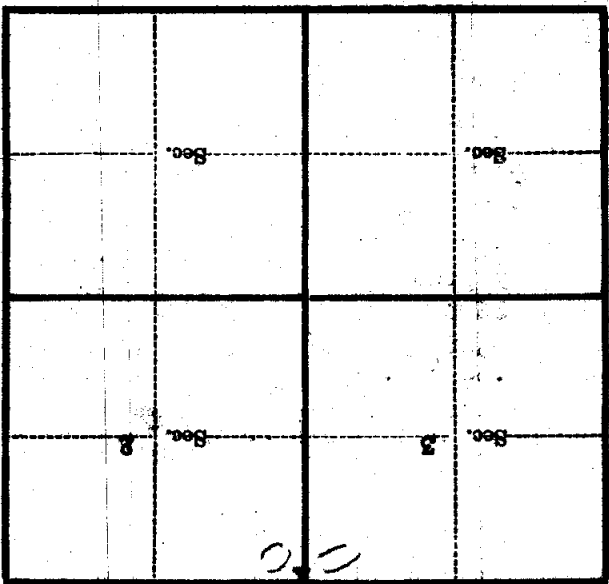
(Date)

(Title)

A-17

Corner again.
Give any further facts which will aid in finding this

chain distant.
33.
from which this Corner bears S 86 W
side of said tree
tree 4 " inches diameter, on the North East
Metal Location Poster is on a Aspen



(Make sketch of topography near Corner)
T. 144 N. R. 29 W. S. 4th. Mer. A-17

U. S. DEPARTMENT OF AGRICULTURE
FOREST SERVICE

posted

Chippewa NATIONAL FOREST

CORNERS OF THE PUBLIC SURVEY

T. 144 N R. 29 W 5th Mer.

Section Corner common to Sections

3, 2, and

Corner consists of a Iron Stake Brass cap (not) in place

State condition good

Dimensions above ground 8" inches.

Sketch grooves, letters, figures, or notches, on proper face or edge.

CARDINAL POSITION

DIAGONAL POSITION

N	W	S	E

NW	SW	SE	NE

Mound of _____ is located _____

Pits are located _____

Sketch markings of Bearing Trees (or Rocks) in proper box and fill blanks below, giving bearings from Corner to Trees and Distances in Links.

CC T144N
R29W
S 3

CC T144N
R29W
S 2

--

--

B.T.

BT

--

--

Species N. Pine W. Oak

Diameter 30" 4"

Bearing S45°W S70°E

Distance 31 ft. 14 FT

Do you believe this to be a genuine Land Office Corner? yes

If not, why? _____

E. V. Juntunen

Signature.

C. O. P.

11/12/30

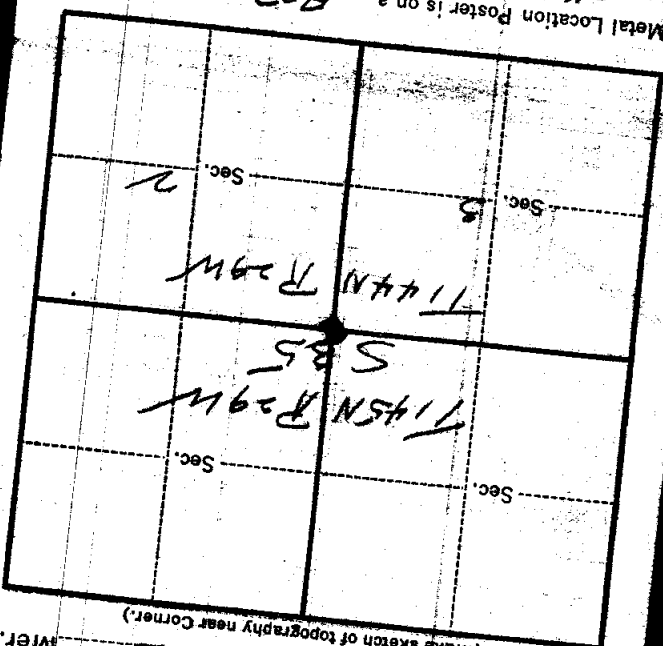
Date.

Title. A-17 3027

Corner again.
Blotch & Aspen, Repa. with
scattering bobbings

Give any further facts which will aid in finding this
chains distant.

from which this Corner bears N 20° E
side of T 144 N R 29 W
tree 3 1/2 inches diameter, on the N
Metal Location Poster is on a Aspen



(Make sketch of topography near Corner.)

8-3027

T. 145 N R. 29 W
5
Mer. A-1

U. S. DEPARTMENT OF AGRICULTURE
FOREST SERVICE

posted

Chippewa NATIONAL FOREST

CORNERS OF THE PUBLIC SURVEY

T. 144N R. 29W 5th Mer.

Section Corner common to Sections

3, 2, and

Corner consists of a Iron Stake Brass cap (note) in place

State condition good

Dimensions above ground 8" inches.

Sketch grooves, letters, figures, or notches, on proper face or edge.

CARDINAL POSITION

DIAGONAL POSITION

--	--	--	--

N W S E

--	--	--	--

NW SW SE NE

Mound of _____ is located _____

Pits are located _____

Sketch markings of Bearing Trees (or Rocks) in proper box and fill blanks below, giving bearings from Corner to Trees and Distances in Links.

CC T144N R29W S3

CC T144N R29W S2

--

--

B.T.

BT

--

--

Species N. Pine W. Oak

Diameter 30" 4"

Bearing S45°W S70°E

Distance 31 ft. 14 FT

Do you believe this to be a genuine Land Office Corner? yes

If not, why? _____

E. V. Juntunen

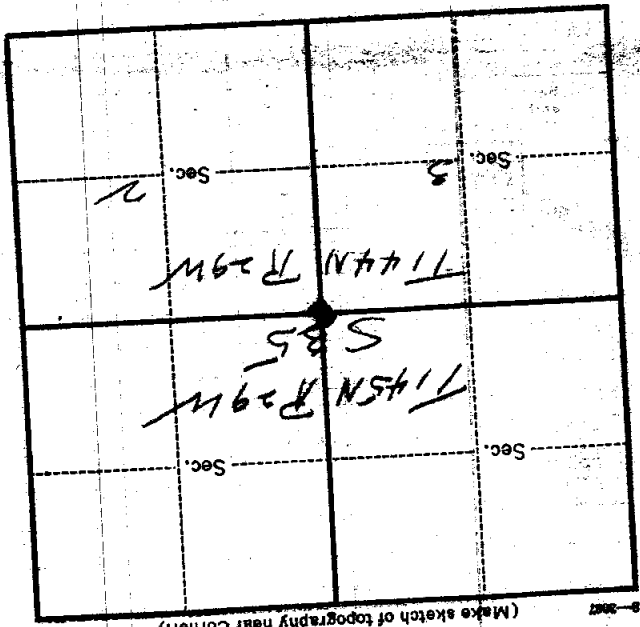
Signature.

C. O. P.

11/12/30
Date.

8-202 (Make sketch of topography near corner.)

T. 145N R. 29W
5th Mer. A-11



Metal Location Poster is on a Aspen

tree $3\frac{1}{2}$ inches diameter, on the N

side of T 144N R 29W

from which this Corner bears N 20° E

chains distant.

Give any further facts which will aid in finding this

Corner again.

Blotch Aspen, with
scattered saplings

U. S. Department of Agriculture

FOREST SERVICE

Chippewa NATIONAL FOREST

127

CORNERS OF THE PUBLIC SURVEY

T. 144 R. 29 5 Mer.

4 section Corner common to Sections 2, and 3

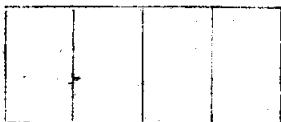
Corner consists of a iron pipe (not) in place State condition good

Dimensions above ground 12 inches

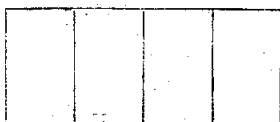
Sketch grooves, letters, figures, or notches, on proper face or edge.

CARDINAL POSITION

DIAGONAL POSITION



N W S E



NW SW SE NE

Mound of is located

Pits are located

Sketch markings of Bearing Trees (or Rocks) in proper box and fill blanks below, giving bearings from Corner to Trees and Distances in Links.



Species N P

Diameter 36

Bearing 886 W

Distance 330h

Do you believe this to be a genuine Land Office Corner? yes

If not, why?

Carl Hardy

(Signature)

Chief of Party

(Title)

(Date)

Corner again.

Give any further facts which will aid in finding this

chains distant. 2

from which this Corner bears N 16 W

side of

tree 4" inches diameter, on the

Metal Location Poster is on a Aspen

	Sec. 2		Sec. 2
	Sec. 2		Sec. 2

(Make sketch of topography near Corner)