

Handwritten scribbles

U. S. Department of Agriculture
FOREST SERVICE

Chippewa NATIONAL FOREST

CORNERS OF THE PUBLIC SURVEY

T. 144 R. 29 Mer.

Sec. Corner common to Sections

14, 15, 10, and 11

Corner consists of a Iron Pipe (set) in place

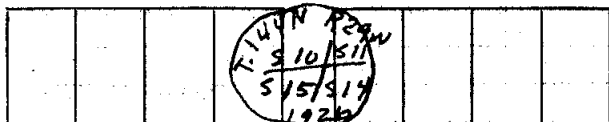
State condition

Dimensions above ground _____ inches

Sketch grooves, letters, figures, or notches, on proper face or edge.

CARDINAL POSITION

DIAGONAL POSITION



N W S E NW SW SE NE

Mound of _____ is located _____

Pits are located _____

Sketch markings of Bearing Trees (or Rocks) in proper box and fill blanks below, giving bearings from Corner to Trees and Distances in Links.

T. 144 N R. 29 W S. 15	T. 144 N R. 29 W S. 14	T. 144 N R. 29 W S. 10	T. 144 N R. 29 W S. 11
B. T.	B. T.	BT	BT

Species Asp. 5.9g N. P. 5.0g Aspen Balsam

Diameter 1.5 in 2.0 in 1.4 in 7 in

Bearing S 90° W S 35° E N 40° W N 29° E

Distance 0.1 Lks 7.1 Lks 4.7 Lks 10.0 Lks

Do you believe this to be a genuine Land Office Corner? _____

If not, why? _____

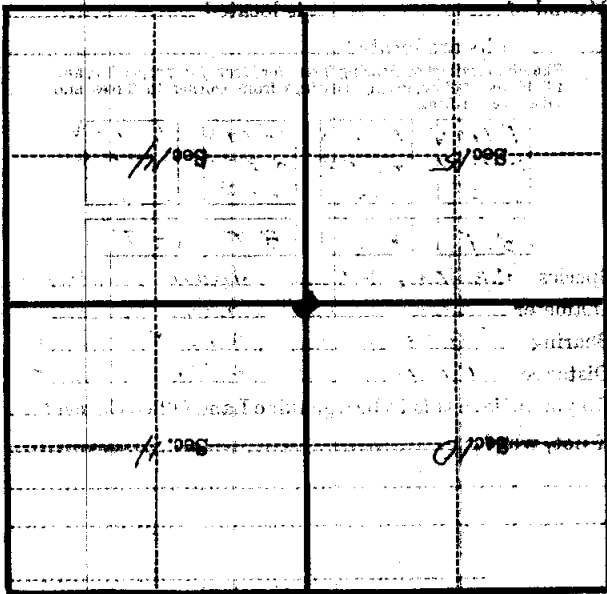
(Signature)

(Date)

(Title)

(Make sketch of topography near Corner)

T. 14 N. R. 29 E. Mer.



Metal Location Poster is on a *Pat 9* *Aspen*

tree 6 inches diameter, on the *South-west* side of *Tree*

from which this Corner bears *N. 28° E.*

0.32 chains distant

Give any further facts which will aid in finding this

Corner again.

COMMISSIONERS OF THE PUBLIC SURVEY

Form 874-9—Revised May, 1918
 U. S. Department of Agriculture
 FOREST SERVICE

*Copied
 &
 Reprinted
 736*

NATIONAL FOREST

CORNERS OF THE PUBLIC SURVEY

T. 144 R. 29 S. 5 Mer.

Corner common to Sections

10, 11, 14, and 15

Corner consists of a New Corner Post (not) in place
 State condition _____

Dimensions above ground _____ inches

Sketch grooves, letters, figures, or notches, on proper face or edge.

CARDINAL POSITION

DIAGONAL POSITION

--	--	--	--

N W S E

--	--	--	--

NW SW SE NE

Mound of _____ is located _____

Pits are located _____

Sketch markings of Bearing Trees (or Rocks) in proper box and fill blanks below, giving bearings from Corner to Trees and Distances in Links.

Species _____

Diameter _____

Bearing _____

Distance _____

Do you believe this to be a genuine Land Office Corner? _____

If not, why? _____

(Signature)

(Date)

(Title)

Corner old paper B.T. 20"
& corner N.W. of corner

Corner again.

Give any further facts which will aid in finding this

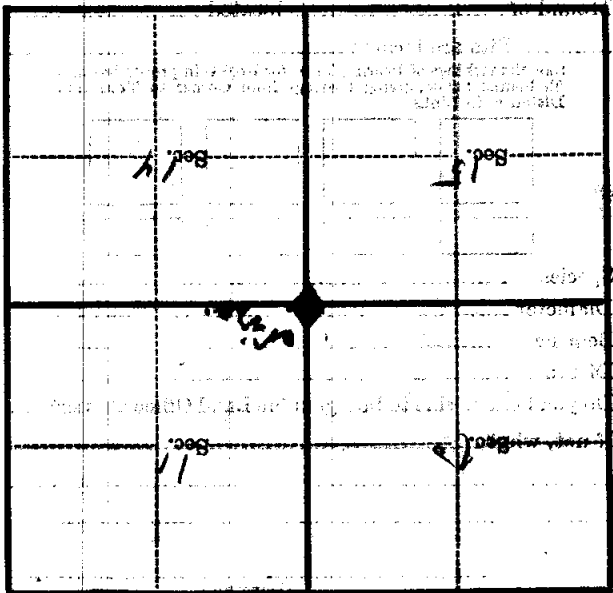
chains distant

from which this Corner bears

side of

tree inches diameter, on the

Metal Location Poster is on a



(Make sketch of topography near Corner)

U. S. Department of Agriculture
FOREST SERVICE

NATIONAL FOREST

129

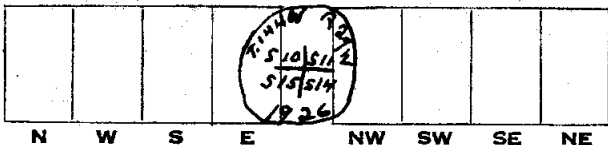
CORNERS OF THE PUBLIC SURVEY

T. 144 R. 29 Mer.

Sec. Corner common to Sections
14, 15, 10, and 11

Corner consists of a Iron pipe (not) in place
State condition

Dimensions above ground inches
Sketch grooves, letters, figures, or notches, on proper face or edge.
CARDINAL POSITION DIAGONAL POSITION



Mound of is located

Pits are located

Sketch markings of Bearing Trees (or Rocks) in proper box and fill blanks below, giving bearings from Corner to Trees and Distances in Links.

T. 144 N R. 29 W S. 15	T. 144 N R. 29 W S. 14	T. 144 N R. 29 W S. 10	T. 144 N R. 29 W S. 11
B.T.	B.T.	B.T.	BT

Species Asp. snag N.P. snag Aspen Balsam
Diameter 13 in 20 in 14 in 7 in
Bearing S 90° W S 35° E N 40° W N 29° E
Distance 61 lks. 71 lks. 47 lks. 100 lks.

Do you believe this to be a genuine Land Office Corner?
If not, why?

(Signature)

(Date)

(Title)

Corner again.

Give any further facts which will aid in finding this

0.32 chains distant.

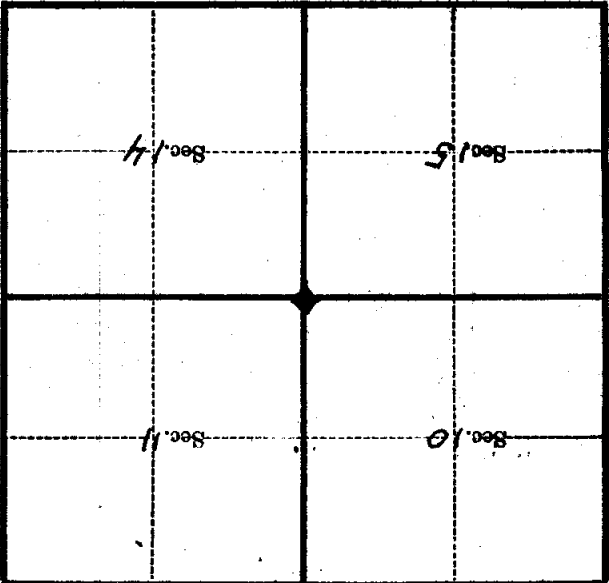
from which this Corner bears N. 28° E

side of Tree

tree 6 inches diameter, on the south-west

Metal Location Posters on a 25 per

put a



(Make sketch of topography near Corner)

J-17 Mer.

T. 144 R. 29