

U. S. DEPARTMENT OF AGRICULTURE
FOREST SERVICE

posted

Chippewa NATIONAL FOREST

CORNERS OF THE PUBLIC SURVEY

T. 144N R. 79 & 30W Mer. 5E

145N Sec. Cor. Corner common to Sections

1, 6, 31, and _____

Corner consists of a Brass cap cor. (not) in place

State condition Good

Dimensions above ground 4" inches.

Sketch grooves, letters, figures, or notches, on proper face or edge.

CARDINAL POSITION

DIAGONAL POSITION

| | | | |
|---|---|---|---|
| | | | |
| N | W | S | E |

| | | | |
|----|----|----|----|
| 31 | 51 | 56 | 31 |
| NW | SW | SE | NE |

Mound of _____ is located _____

Pits are located _____

Sketch markings of Bearing Trees (or Rocks) in proper box and fill blanks below, giving bearings from Corner to Trees and Distances in Links.

T144N
R30W
5100

T144N
R22W
5600

BT

BT

Species W. Oak Elm _____

Diameter 20" 22" _____

Bearing N58E S49E _____

Distance 49' 24' _____

Do you believe this to be a genuine Land Office Corner? Yes

If not, why? _____

OR B Brewer

Signature.

Assistant

Title. A-1 8-3037

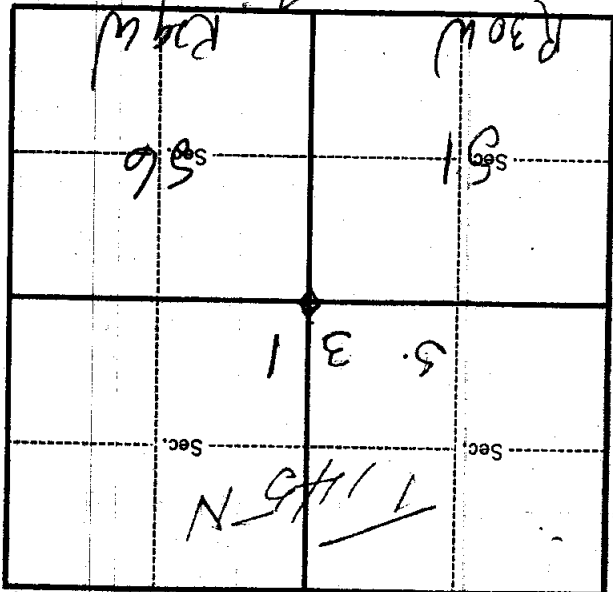
12/27/30

Date.

(Make sketch of topography near Corner.)

Mer.

T. 144/1578 R. 29/30 14



Metal Location Poster is on a *hedge* tree ^{2"} inches diameter, on the side of

from which this Corner bears *N 36 W*

chains distant *47*

Give any further facts which will aid in finding this

Corner again.

*On the West side of the
80' from road*