

U. S. Department of Agriculture
FOREST SERVICE

E-17

Chippewa NATIONAL FOREST

CORNERS OF THE PUBLIC SURVEY

T. 144 R. 28 5th Mer.

Sec. Corner common to Sections

2, 3, 10, and 11

Corner consists of a Intersection of 2 ^{blazed lines} (not) in place

State condition _____

Dimensions above ground _____ inches

Sketch grooves, letters, figures, or notches, on proper face or edge.

CARDINAL POSITION

DIAGONAL POSITION

N	W	S	E	NW	SW	SE	NE

Mound of _____ is located _____

Pits are located _____

Sketch markings of Bearing Trees (or Rocks) in proper box and fill blanks below, giving bearings from Corner to Trees and Distances in Links.

Species _____

Diameter _____

Bearing No Bearing trees

Distance _____

Do you believe this to be a genuine Land Office Corner? ?

If not, why? _____

Dana F. Kirkman
(Signature)

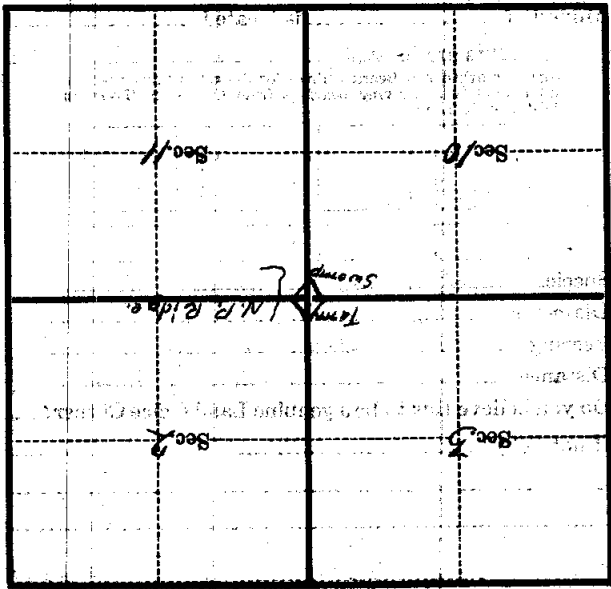
3/12/28
(Date)

For Ranger
(Title)

E-17

Metal Location: Poster is on a tree inches diameter, on the side of from which this Corner bears chains distant. Give any further facts which will aid in finding this Corner again.

Well blazed out N 1/2 S + E 1/2 W
1/17 1/2 S. No corner stake.



(Make sketch of topography near Corner)