

U. S. Department of Agriculture
FOREST SERVICE

V-17

Chippewa NATIONAL FOREST
CORNERS OF THE PUBLIC SURVEY

T. 144 R. 28 5th P. Mer.

Section Corner common to Sections
26, 27, 29, and 35

Corner consists of a yellow tag (~~not~~) in place
State condition Good

Dimensions above ground 54 inches

Sketch grooves, letters, figures, or notches, on proper face or edge.

CARDINAL POSITION

DIAGONAL POSITION

--	--	--	--

--	--	--	--

N W S E

NW SW SE NE

Mound of _____ is located _____

Pits are located _____

Sketch markings of Bearing Trees (or Rocks) in proper box and fill blanks below, giving bearings from Corner to Trees and Distances in Links.

Species _____

Diameter _____

Bearing _____

Distance _____

Do you believe this to be a genuine Land Office Corner? no

If not, why? No evidence found of original corner

Martin K. Lauritzen

(Signature)

1/22/59

(Date)

Asst Dist Fore Ranger

(Title)

V-17

Dotted lines for notes.

Corner located in this point

Corner again.

Give any further facts which will aid in finding this

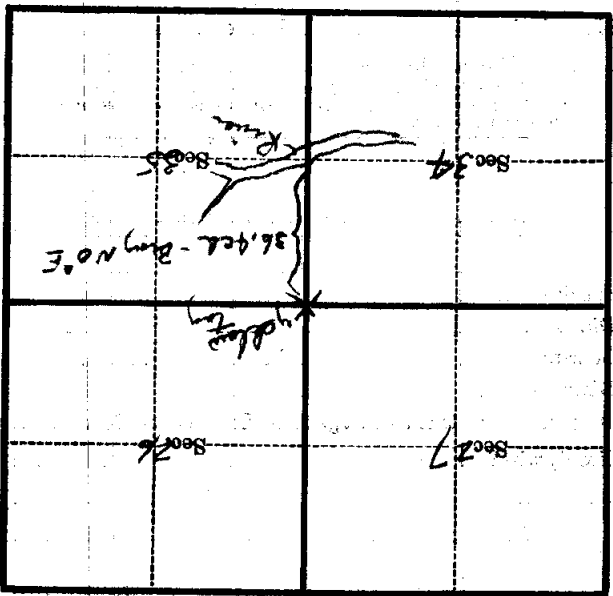
8 feet ~~feet~~ distant.

from which this Corner bears *S 20° E*

side of *tree*

tree *6* inches diameter, on the *East*

Metal Location Poster is on a *tree*



(Make sketch of topography near Corner)