

U. S. Department of Agriculture
FOREST SERVICE

11-19-36
123

Chippewa NATIONAL FOREST

CORNERS OF THE PUBLIC SURVEY

T. 144 R. 25-26 5th Mer.

Section Corner common to Sections
13, 18, 24, and 19

Corner consists of a Tam. Post (not) in place

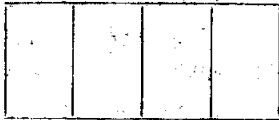
State condition good

Dimensions above ground 30 inches

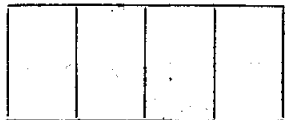
Sketch grooves, letters, figures, or notches, on proper face or edge.

CARDINAL POSITION

DIAGONAL POSITION



N W S E

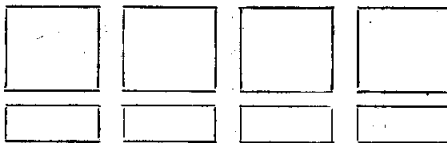


NW SW SE NE

Mound of _____ is located _____

Pits are located _____

Sketch markings of Bearing Trees (or Rocks) in proper box and fill blanks below, giving bearings from Corner to Trees and Distances in Links.



Species _____

Diameter _____

Bearing _____

Distance _____

Do you believe this to be a genuine Land Office Corner? yes

If not, why? _____

Norman F. Shaw

(Signature)

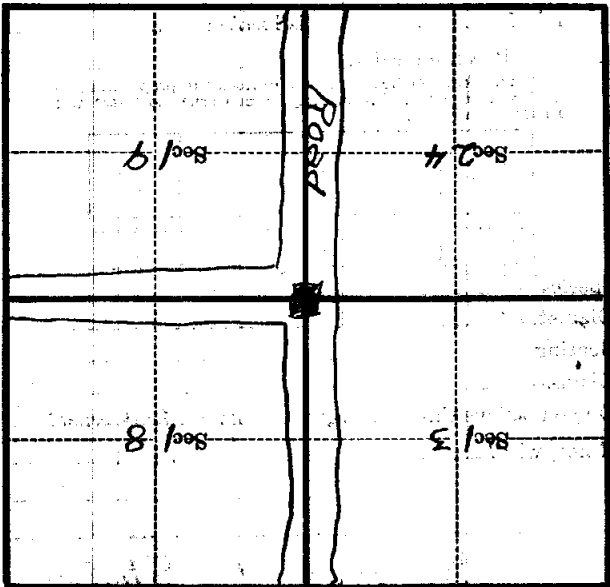
Engineer

(Title)

Mar 7-35

(Date)

Metal Location Poster is on a Tel. Pole
 tree inches diameter, on the East side of Road
 from which this Corner bears West 40
 chains distant.
 Give any further facts which will aid in finding this
 Corner again.
 Marking Not Legible



(Make sketch of topography near Corner)

U. S. Department of Agriculture

FOREST SERVICE

NATIONAL FOREST

CORNERS OF THE PUBLIC SURVEY

T. 144 R. 25-26 5th Mer.

section Corner common to Sections

13, 18, 24, and 19.

Corner consists of a Tam post (not) in place

State condition good

Dimensions above ground 30 inches

Sketch grooves, letters, figures, or notches, on proper face or edge.

CARDINAL POSITION

DIAGONAL POSITION

--	--	--	--

--	--	--	--

N W S E

NW SW SE NE

Mound of _____ is located _____

Pits are located _____

Sketch markings of Bearing Trees (or Rocks) in proper box and fill blanks below, giving bearings from Corner to Trees and Distances in Links.

Species _____

Diameter _____

Bearing _____

Distance _____

Do you believe this to be a genuine Land Office Corner? yes

If not, why? _____

Norman P. Shaw

(Signature)

Engineer

(Title)

Mar. 7, 1925

(Date)

NATIONAL FOREST

SECTION OF THE PUBLIC LANDS

Map showing not legible

Corner again.

Give any further facts which will aid in finding this

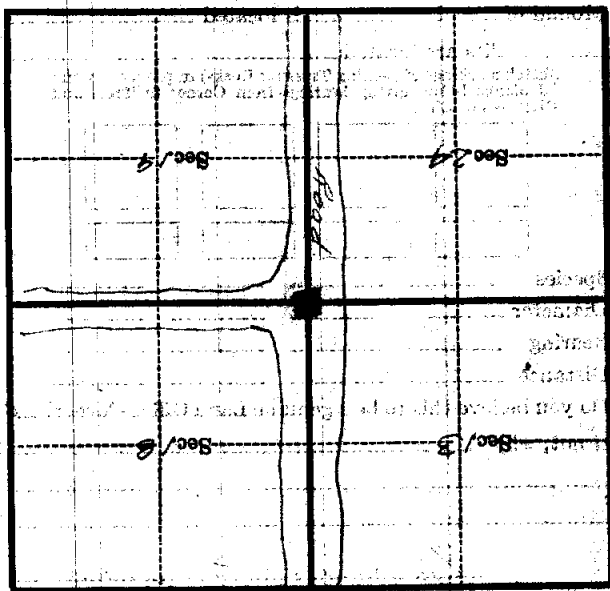
No chains distant.

from which this corner bears East.

side of road

tree inches diameter, on the East.

Metal Location Poster is on a tall pole



(Make sketch of topography near Corner)

Form 874-9—Revised May, 1918
U. S. Department of Agriculture
FOREST SERVICE

Chippewa NATIONAL FOREST

CORNERS OF THE PUBLIC SURVEY

T. 144 R. 25-26 5th Mer.

Section Corner common to Sections
13, 18, 24, and 19

Corner consists of a Tam. Post (not) in place

State condition good

Dimensions above ground 30 inches

Sketch grooves, letters, figures, or notches, on proper face or edge.

CARDINAL POSITION

DIAGONAL POSITION

--	--	--	--

N W S E

--	--	--	--

NW SW SE NE

Mound of _____ is located _____

Pits are located _____

Sketch markings of Bearing Trees (or Rocks) in proper box and fill blanks below, giving bearings from Corner to Trees and Distances in Links.

Species _____

Diameter _____

Bearing _____

Distance _____

Do you believe this to be a genuine Land Office Corner? Yes

If not, why? _____

Norman F. Shaw

(Signature)

Engineer

(Title)

Mar. 7-35

(Date)

UNITED STATES GEOLOGICAL SURVEY

DEPARTMENT OF THE INTERIOR

OFFICE OF THE NATIONAL FOREST

CORNER OF THE PUBLIC SURVEY

Corner again. *Marking Not Edgible*

Give any further facts which will aid in finding this

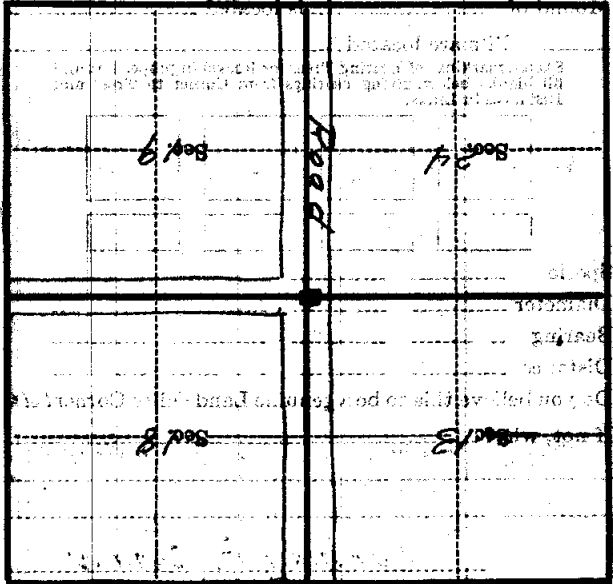
observed distant *40* CARBON POSITION

from which this Corner bears *West*

side of *Road*

tree inches diameter, on the *East*

Metal Location Poster is on a *1/2*



(Sketch sketch of topography near Corner)

U. S. Department of Agriculture
FOREST SERVICE

123

Chippewa NATIONAL FOREST P.

CORNERS OF THE PUBLIC SURVEY

T. 144 N R. 26 & 27 5 th. Mer.

Section Corner common to Sections
13, 24, 18, and 19

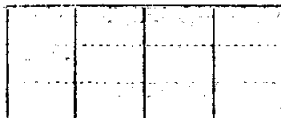
Corner consists of a sq. stake (not) in place
State condition fair

Dimensions above ground 4' high inches

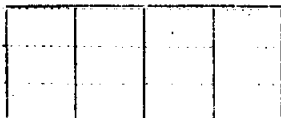
Sketch grooves, letters, figures, or notches, on proper face or edge.

CARDINAL POSITION

DIAGONAL POSITION



N W S E



NW SW SE NE

Mound of is located

Pits are located

Sketch markings of Bearing Trees (or Rocks) in proper box and fill blanks below, giving bearings from Corner to Trees and Distances in Links.

T 144
R 26

FSLP

T 144
R 26



B T

B T

Species J. Pine J. Pine N. Pine

Diameter 12" 8" 14"

Bearing N 32 W S 49 W N 67 E

Distance 22 lks. 61 lks.

Do you believe this to be a genuine Land Office Corner? yes

If not, why?

H. A. Brial

(Signature)

Chief of Party

(Date)

(Title)

8-25 of 04-25

Dotted lines for notes.

Corner again.

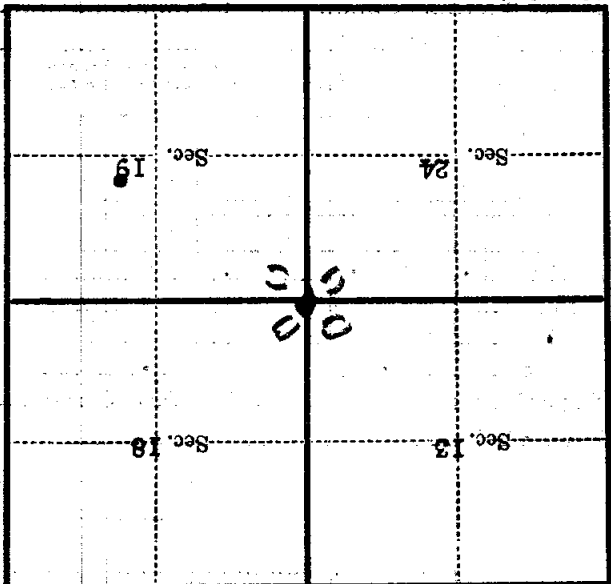
Give any further facts which will aid in finding this chains distant.

from which this Corner bears N 49 E

side of said tree

tree 8 inches diameter, on the North East

Metal Location Poster is on a Jack Pine



(Make sketch of topography near Corner)