

U. S. Department of Agriculture

FOREST SERVICE

E-13

Chippewa

NATIONAL FOREST

CORNERS OF THE PUBLIC SURVEY

T. 144 N. . R. 26 W. 5th Mer.

Sec. 11, 14, 21, 24, 29, 32, 39, and 46

Corner consists of a (not) in place

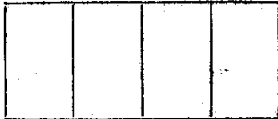
State condition New treated post

Dimensions above ground inches

Sketch grooves, letters, figures, or notches, on proper face or edge.

CARDINAL POSITION

DIAGONAL POSITION



N W S E

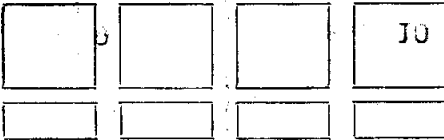


NW SW SE NE

Mound of is located

Pits are located

Sketch markings of Bearing Trees (or Rocks) in proper box and fill blanks below, giving bearings from Corner to Trees and Distances in Links.



Species

Diameter

Bearing

Distance

Do you believe this to be a genuine Land Office Corner? Yes

If not, why?

Ray W Fassett (Signature) Sept 1953 (Date)

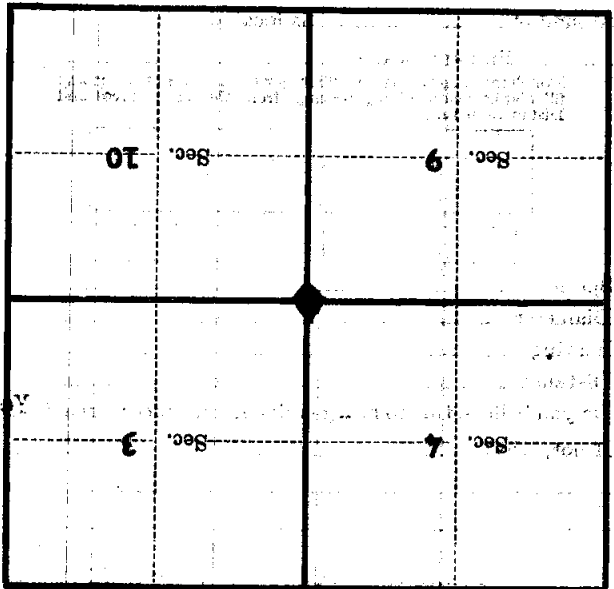
(Date)

(Title)

E-13

Set new 7" treated post $3\frac{1}{2}$ feet high from
 which PSIP on 8" tamarack bears S. 30° W.
 1.37 ch. and PSIP on 6" tamarack bears
 S. 86° W. 0.68 ch. This is an original
 GIO corner as the old scribbled post was
 found. New post is in swamp and is scribbled
 "80".

Corner again. New treated post
 Give any further facts which will aid in finding this
 chains distant.
 from which this Corner bears
 side of
 tree inches diameter, on the
 Metal Location Poster is on a



(Make sketch of topography near Corner)

T. 117 N. R. 26 W. Mer.

U. S. Department of Agriculture

FOREST SERVICE

E-13

Chippewa NATIONAL FOREST

CORNERS OF THE PUBLIC SURVEY

T. 144 N. R. 26 W. 5th Mer.

Sec. Corner common to Sections

3, 4, 9, and 10

Corner consists of a (not) in place

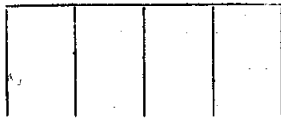
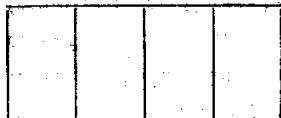
State condition New treated post

Dimensions above ground inches

Sketch grooves, letters, figures, or notches, on proper face or edge.

CARDINAL POSITION

DIAGONAL POSITION



N W S E

NW SW SE NE

Mound of is located

Pits are located

Sketch markings of Bearing Trees (or Rocks) in proper box and fill blanks below, giving bearings from Corner to Trees and Distances in Links.



Species

Diameter

Bearing

Distance

Do you believe this to be a genuine Land Office Corner? Yes

If not, why?

Farrell

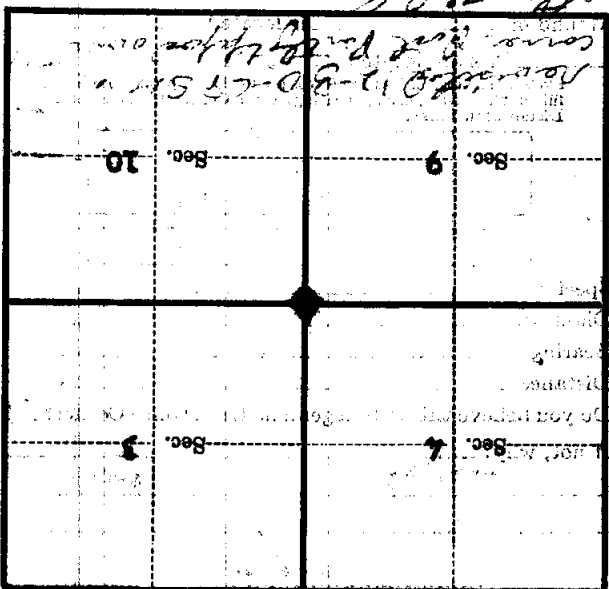
(Signature)

(Date)

(Title)

Set new 7" treated post 3/4 feet high from
which PSIP on 8" tamarack bears S. 30 W.
1.34 m. and PSIP on 6" tamarack bears
S. 80 W. 0.68 m. This is an original
old corner as the old scribbled post was
found. The post is in swamp and is scribbled
over.

Corner again.
Give any further facts which will aid in finding this
from which this Corner bears
side of
tree inches diameter, on the
Metal Location Poster is on a



(Make sketch of topography near Corner)

U. S. Department of Agriculture

FOREST SERVICE

E-13
11-19-26
123

Chippewa NATIONAL FOREST

CORNERS OF THE PUBLIC SURVEY

T. 144 N R. 26 W Sth Mer.

Section 7 Corner common to Sections 3, 4, 9, and 10

Corner consists of a wood stake (not) in place State condition Good-

Dimensions above ground 3' x 3" inches

Sketch grooves, letters, figures, or notches, on proper face or edge.

CARDINAL POSITION

DIAGONAL POSITION

| | | | |
|--|--|--|--|
| | | | |
|--|--|--|--|

| | | | |
|-----|---|----|--------|
| R26 | 5 | S | T. 144 |
| 54 | 9 | 10 | S3 |

N W S E

NW SW SE NE

Mound of _____ is located _____

Pits are located _____

Sketch markings of Bearing Trees (or Rocks) in proper box and fill blanks below, giving bearings from Corner to Trees and Distances in Links.

| | | | |
|--|--|--|--|
| | | | |
| | | | |

Species _____

Diameter _____

Bearing _____

Distance _____

Do you believe this to be a genuine Land Office Corner?

If not, why? _____

E. M. Handy -
(Signature)

(Date)

COP
(Title)
E-13

Corner again.

Give any further facts which will aid in finding this

chains distant.

1.34

from which this Corner bears

N 40° E

side of

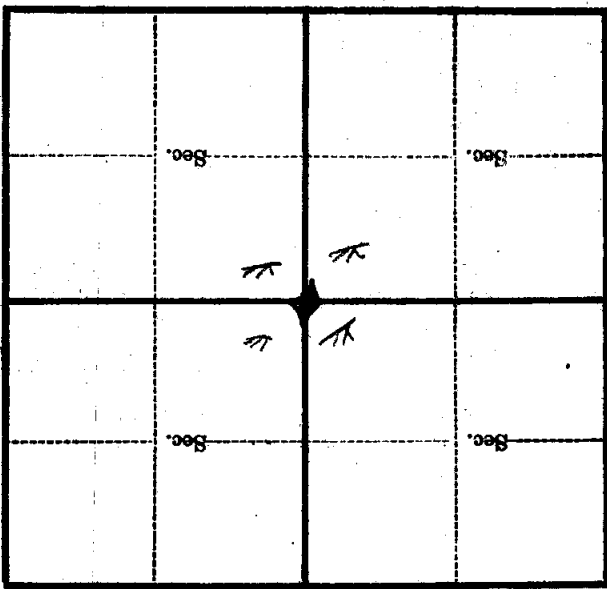
S 21° 12' E

tree 6 inches diameter, on the

NE

Metal Location Poster is on a

Tam.



(Make sketch of topography near Corner)

T. 144N R. 26W 5th Mer.