

U. S. Department of Agriculture
FOREST SERVICE

N-9
11-18-26
123

Chippewa NATIONAL FOREST

CORNERS OF THE PUBLIC SURVEY

T. 144 R. 26 5th Mer.

Sec. Corner common to Sections
16, 17, 20, and 21

Corner consists of a obliterated (not) in place
State condition

Dimensions above ground _____ inches

Sketch grooves, letters, figures, or notches, on proper face or edge.

CARDINAL POSITION

DIAGONAL POSITION

--	--	--	--

N W S E

--	--	--	--

NW SW SE NE

Mound of _____ is located _____

Pits are located _____

Sketch markings of Bearing Trees (or Rocks) in proper box and
fill blanks below, giving bearings from Corner to Trees and
Distances in Links.

Species Cedar

Diameter 9"

Bearing N. 78° W

Distance 1.16 Ch.

Do you believe this to be a genuine Land Office Corner? Yes

If not, why? _____

J. C. Leadbeater

(Signature)

Forest Ranger

(Title)

Nov. 23-27

(Date)

U. S. DEPARTMENT OF AGRICULTURE
FOREST SERVICE

WESTERN NATIONAL FOREST

CORNERS OF THE PUBLIC SURVEY

ONE CEDAR BT. IN SMALL
GROUP OF TREES IN
MIDDLE OF MUSKOG.

Corner again.

Give any further facts which will aid in finding this

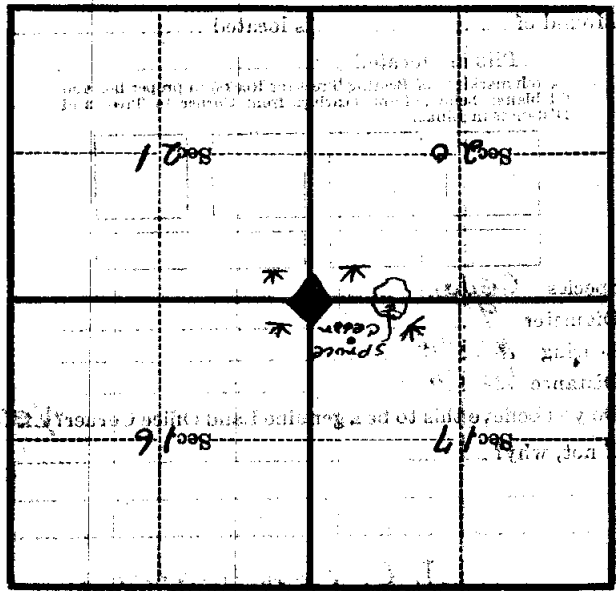
80145, chains distant

from which this corner bears N 79° W.

side of

tree 4 inches diameter, on the E

Metal Location Poster is on a T.M.



(Make sketch of topography near corner)

U. S. Department of Agriculture
FOREST SERVICE

N-9

123

NATIONAL FOREST

CORNERS OF THE PUBLIC SURVEY

T. *144* R. *26* Mer.

Sec. Corner common to Sections
16, 17, 20, and 21

Corner consists of a *4 sided stake* (not) in place
State condition *badly decayed*

Dimensions above ground _____ inches

Sketch grooves, letters, figures, or notches, on proper face or edge.

CARDINAL POSITION

DIAGONAL POSITION

N	W	S	E

<i>S</i>	<i>S</i>	<i>S</i>	<i>S</i>
<i>17</i>	<i>20</i>	<i>21</i>	<i>16</i>
NW	SW	SE	NE

Mound of _____ is located _____

Pits are located _____

Sketch markings of Bearing Trees (or Rocks) in proper box and fill blanks below, giving bearings from Corner to Trees and Distances in Links.

<i>T. 144</i>
<i>R. 26</i>
<i>S. 20</i>

--

--

<i>T. 144</i>
<i>R. 26</i>
<i>S. 17</i>

<i>B.T.</i>

--

--

<i>B.T.</i>

Species *Cedar* _____ *Cedar*

Diameter *16 in.* _____ *10*

Bearing *S 77° W* _____ *N 78° W*

Distance *1.16* _____ *1.17*

Do you believe this to be a genuine Land Office Corner? *yes*

If not, why? _____

Albert Frieser

(Signature)

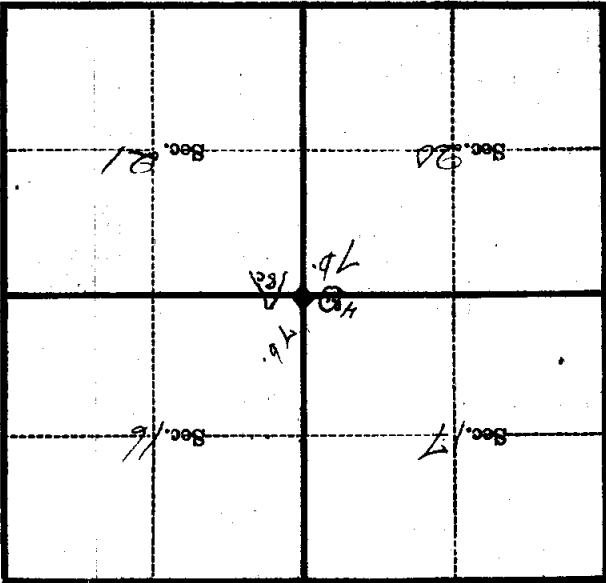
10/22/35

(Date)

2-7394 *N-9* (Title)

Corner again.
 Put up F.S.L.P. on
 3 in. T.M. 8.55 E 15 LKS.
 DISTANT
 Replaced old cot.
 with 4 in. square cedar
 post 30 in. above
 ground.

Give any further facts which will aid in finding this
 chains distant.
 from which this Corner bears
 side of T.M.
 tree 6 inches diameter, on the east
 Metal Location Poster is on a
 T.M.



(Make sketch of topography near Corner)

U. S. Department of Agriculture
FOREST SERVICE

N.A.

already posted.

Chippewa NATIONAL FOREST
CORNERS OF THE PUBLIC SURVEY

T. 144 R. 26 Mer.

Sec Corner common to Sections

16, 17, 20, and 21

Corner consists of a 4 sided stake (dot) in place

State condition badly decayed

Dimensions above ground _____ inches

Sketch grooves, letters, figures, or notches, on proper face or edge.

CARDINAL POSITION

DIAGONAL POSITION

N	W	S	E

S	S	S	S
17	20	21	16
NW	SW	SE	NE

Mound of _____ is located _____

Pits are located _____

Sketch markings of Bearing Trees (or Rocks) in proper box and fill blanks below, giving bearings from Corner to Trees and Distances in Links.

T. 144 R. 26			T. 144 R. 26 S. 17
B.T.			B.T.

Species Cedar _____ Cedar

Diameter 16 in _____ 10

Bearing S. 71° W _____ N 78° W

Distance 1.16 _____ 1.17

Do you believe this to be a genuine Land Office Corner? yes

If not, why? _____

A. Friesen

(Signature)

10/22/35
(Date)

8-7304 N-9 (Title)

Department of the Interior

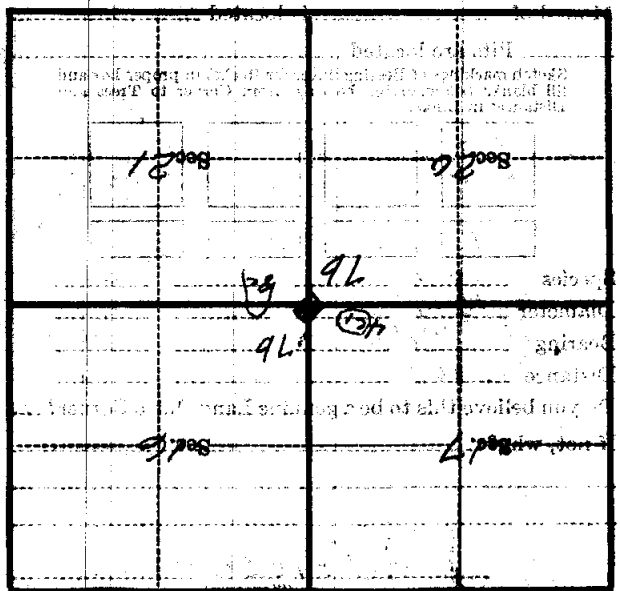
Geological Survey

Replaced old corner
with 4 in square cedar
posts 30 in above ground.
Remarked on 1953 Aug 15
Treated post marked "5C"

Other again.
F
T.M. 5.850E 45TKS distant
F.S.L.P. O.H.M.

Give any further facts which will aid in finding this
chain distant.

Metal Location Poster is on a
tree 6 inches diameter, on the East
side of T.M.
from which this Corner bears
N 72° W



Sketch of topography near Corner

U. S. Department of Agriculture

FOREST SERVICE

N-9

Chippewa NATIONAL FOREST

CORNERS OF THE PUBLIC SURVEY

T. 144 N. R. 26 W. Mar.

Section Corner common to Sections

16, 17, 20, and 21

Corner consists of a (not) in place

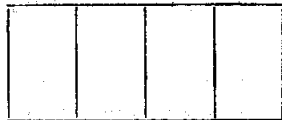
State condition New treated post.

Dimensions above ground inches

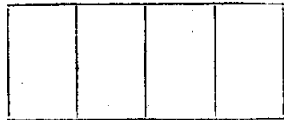
Sketch grooves, letters, figures, or notches, on proper face or edge.

CARDINAL POSITION

DIAGONAL POSITION



N W S E



NW SW SE NE

Mound of is located

Pits are located

Sketch markings of Bearing Trees (or Rocks) in proper box and fill blanks below, giving bearings from Corner to Trees and Distances in Links.



Species

Diameter

Bearing

Distance

Do you believe this to be a genuine Land Office Corner? Yes

If not, why?

Ray W. Jernett (Signature) Sept 1953 (Date) (Title)

N-9

marked "SC".

on W.O. Posttype photo DEI 9-30. Post

and on large red pine East 2.48 ch. Ident.

New Billings dead cedar B.T. 577A 1.16 ch

cedar B.T. are on this small island.

of the corner. The two original G.L.O.

island about 1 ch. across and 1 ch. west

red pines. There is a small spruce

tip of timbered point with several large

not which is in Tamack swamp near N.W.

Corner again. Marked original G.L.O. cor-

Give any further facts which will aid in finding this

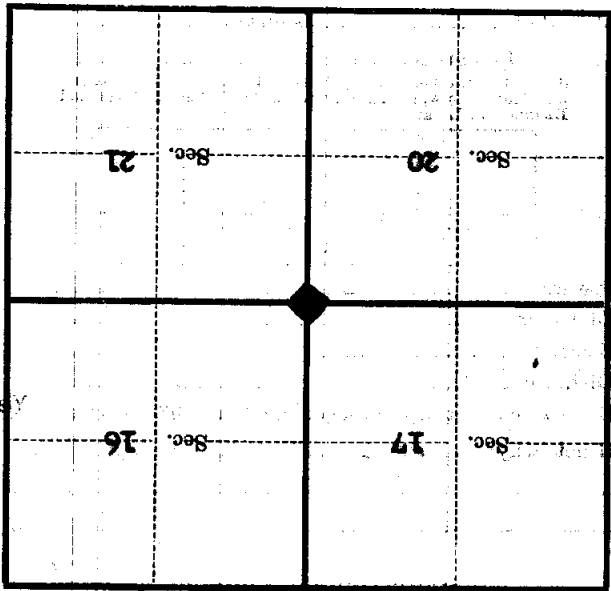
chains distant.

from which this Corner bears

side of

tree inches diameter, on the

Metal Location Poster is on a



(Make sketch of topography near Corner)

T. 147 N. R. 26 W.

Mer.

N-9

Form 874-B—Revised May, 1918
U. S. Department of Agriculture
FOREST SERVICE

N-9

Chippewa NATIONAL FOREST

CORNERS OF THE PUBLIC SURVEY

T. 144 N. R. 26 W. Mer.

Section _____ Corner common to Sections
16 , 17 , 20 , and 21

Corner consists of a _____ (not) in place
State condition New treated post.

Dimensions above ground _____ inches
Sketch grooves, letters, figures, or notches, on proper face or edge.
CARDINAL POSITION DIAGONAL POSITION

N	W	S	E

NW	SW	SE	NE

Mound of _____ is located _____

Pits are located _____

Sketch markings of Bearing Trees (or Rocks) in proper box and fill blanks below, giving bearings from Corner to Trees and Distances in Links.

Species _____

Diameter _____

Bearing _____

Distance _____

Do you believe this to be a genuine Land Office Corner?

If not, why? _____

insert

(Signature)

5-2
(Date)

(Title)

marked "30"

on W.O. Posttype photo DEI 9-30. Post

and on large red pine East 2.48 ch. Ident.

New RSIS tags dead cedar B.T. 877W 1.16 ch

cedar B.T. are on this small island.

of the corner. The two original G.L.O. island about 1 ch. across and 1 ch. west

red pines. There is a small spruce tip of timbered point with several large

box which is in Tamarack swamp near N.W. Corner again. No-marked original G.L.O. cor-

ner again. No-marked original G.L.O. cor-

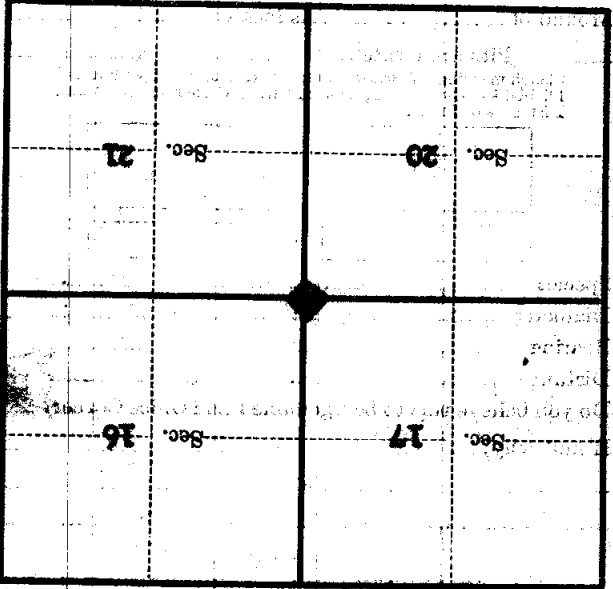
Give any further facts which will aid in finding this

from which this Corner bears

side of

tree inches diameter, on the

Metal Location Poster is on a



(Make sketch of topography near Corner)

T 114 R. R. 26 W. Mer.