

U. S. Department of Agriculture

FOREST SERVICE

11-16-34
123

Chippewa NATIONAL FOREST

CORNERS OF THE PUBLIC SURVEY

T. 144 R. 26 S. 5th Mer.

1/4 Corner common to Sections
32, and 33

Corner consists of a Wooden Stake (not) in place
State condition Good

Dimensions above ground 36 inches

Sketch grooves, letters, figures, or notches, on proper face or edge.

CARDINAL POSITION

DIAGONAL POSITION

--	--	--	--

		R.26	T.144
S.32	S.33	S.33	S.33

N W S E

NW SW SE NE

Mound of _____ is located _____

Pits are located _____

Sketch markings of Bearing Trees (or Rocks) in proper box and fill blanks below, giving bearings from Corner to Trees and Distances in Links.

Species _____

Diameter _____

Bearing _____

Distance _____

Do you believe this to be a genuine Land Office Corner? Yes

If not, why? _____

H. A. Brills

(Signature)

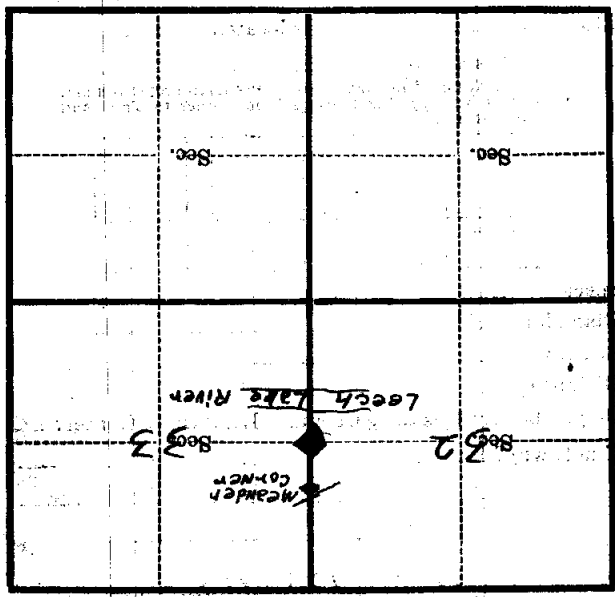
Chief of Party

(Title)

7/16/34
(Date)

Metal Location Poster is on a tree inches diameter, on the side of from which this Corner bears chains distant.

Give any further facts which will aid in finding this Corner again.



(Make sketch of topography near Corner)

U. S. Department of Agriculture

FOREST SERVICE

Chippewa NATIONAL FOREST

CORNERS OF THE PUBLIC SURVEY

T. 144 R. 26 5th Mer.

1/4 Corner common to Sections
32, and 33

Corner consists of a Wooden Stake (not) in place
State condition Good

Dimensions above ground 36 inches

Sketch grooves, letters, figures, or notches, on proper face or edge.

CARDINAL POSITION

DIAGONAL POSITION

N	W	S	E

		R. 26	T. 144
S. 32	S. 33	S. 33	S. 33
NW	SW	SE	NE

Mound of _____ is located _____

Pits are located _____

Sketch markings of Bearing Trees (or Rocks) in proper box and fill blanks below, giving bearings from Corner to Trees and Distances in Links.

Species _____

Diameter _____

Bearing _____

Distance _____

Do you believe this to be a genuine Land Office Corner? Yes

If not, why? _____

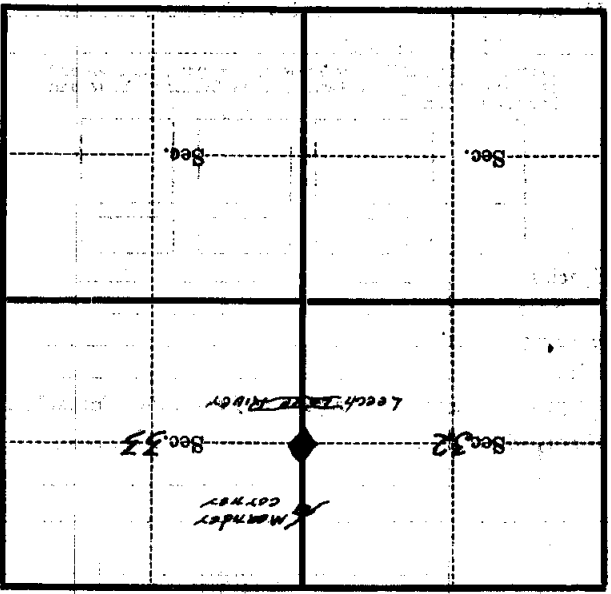
H. A. Bull
(Signature)

Chief of Party
(Title)

7/16/34
(Date)

Handwritten notes on a series of horizontal dashed lines.

Metal Location Poster is on a tree inches diameter, on the side of from which this Corner bears chains distant. Give any further facts which will aid in finding this Corner again.



(Make sketch of topography near Corner)

already posted

U. S. Department of Agriculture
FOREST SERVICE

Chippewa NATIONAL FOREST

CORNERS OF THE PUBLIC SURVEY

T. 144 N R. 26 W 54 P. Mer.

1/4 Corner common to Sections
32, and 33

Corner consists of a Wood Stake (not) in place
State condition Good

Dimensions above ground 36" inches

Sketch grooves, letters, figures, or notches, on proper face or edge.

CARDINAL POSITION

DIAGONAL POSITION

N	W	S	E

		R26	T144
S32	S33	S33	S33
NW	SW	SE	NE

Mound of _____ is located _____

Pits are located _____

Sketch markings of Bearing Trees (or Rocks) in proper box and fill blanks below, giving bearings from Corner to Trees and Distances in Links.

Species _____

Diameter _____

Bearing _____

Distance _____

Do you believe this to be a genuine Land Office Corner? Yes

If not, why? _____

H. A. Brillis

(Signature)

7/16/34

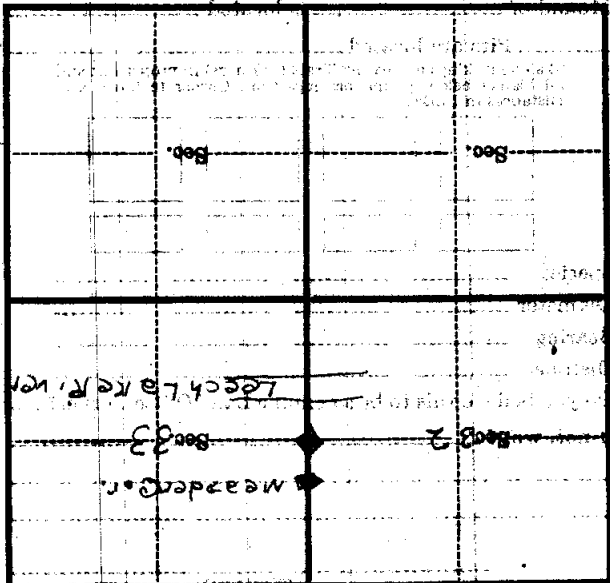
(Date)

C. O. P.

(Title)

SECTION 2
 T. 14 N. R. 26 E. S. 33
 CORNER AGAIN.

Give any further facts which will aid in finding this
 chain distant
 from which this Corner bears
 side of
 inches diameter, on the
 Metal Location Poster is on a



(Make sketch of topography near Corner)