

U. S. Department of Agriculture
FOREST SERVICE

R-7
11-16-27
123

Chippewa NATIONAL FOREST

CORNERS OF THE PUBLIC SURVEY

T. 144 R. 26 5th Mer.

4 Corner common to Sections
20, and 29

Corner consists of a Stake (not) in place
State condition _____

Dimensions above ground 48 inches

Sketch grooves, letters, figures, or notches, on proper face or edge.

CARDINAL POSITION

DIAGONAL POSITION

N	W	S	E

NW	SW	SE	NE

Mound of _____ is located _____

Pits are located _____

Sketch markings of Bearing Trees (or Rocks) in proper box and fill blanks below, giving bearings from Corner to Trees and Distances in Links.

4
3.29
1

4
3.20

B.T.

B.T.

Species TAM. TAM.

Diameter 10 5

Bearing N. 88 W. S. 53 W.

Distance 97/ks 57/ks

Do you believe this to be a genuine Land Office Corner? yes

If not, why? _____

W. L. Schipull

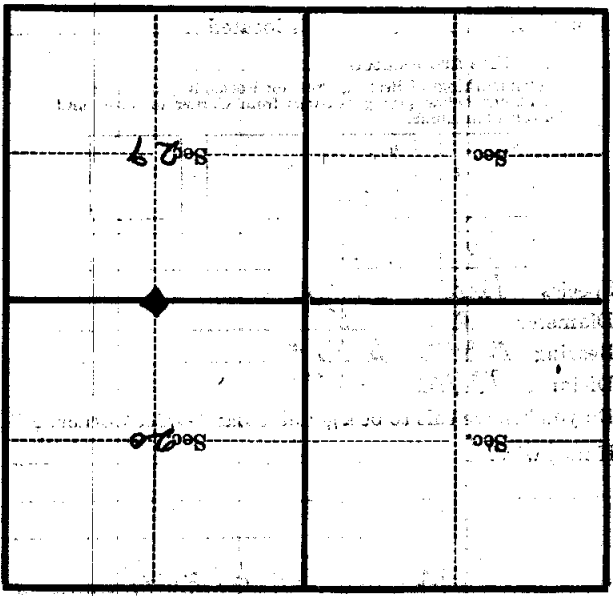
(Signature)

For. Ranger

(Title)

11/9/27
(Date)

Corner again.
 Give any further facts which will aid in finding this
 60 lbs chains distant.
 from which this Corner bears
 N 32° E
 side of trees
 tree 7 inches diameter, on the North
 Metal Location Poster is on a
 W. PINE
 The corner is directly
 in a little swamp
 Both trees down



(Make sketch of topography near Corner)

T. 144 R. 22 S. 14
 Mer.

U. S. Department of Agriculture

FOREST SERVICE

R-7

Chippewa NATIONAL FOREST

CORNERS OF THE PUBLIC SURVEY

T. 144 N., R. 26 W., Mer.

W. C. to 1/4 Corner common to Sections

20, and 29

Corner consists of a (not) in place

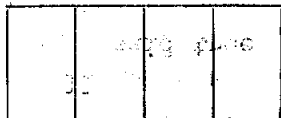
State condition

Dimensions above ground inches

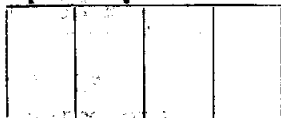
Sketch grooves, letters, figures, or notches, on proper face or edge.

CARDINAL POSITION

DIAGONAL POSITION



N W S E

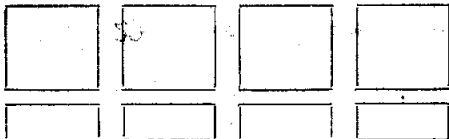


NW SW SE NE

Mound of is located

Pits are located

Sketch markings of Bearing Trees (or Rocks) in proper box and fill blanks below, giving bearings from Corner to Trees and Distances in Links.



Species

Diameter

Bearing

Distance

Do you believe this to be a genuine Land Office Corner? Yes

If not, why?

Ray W Lassut (Signature) Sept 1953

(Date)

(Title)

R-7

Corner again. True corner is in small open swamp. Set treated post for W.C. post described "WC 1/4 R32E 60 L35N". Post is at base of 11" white pine on small point of land at SW edge of swamp. This is same point recovered by F.S. men in 1927 at which time original rotted landmark B.T.'s were still existent.

Give any further facts which will aid in finding this

chains distant.

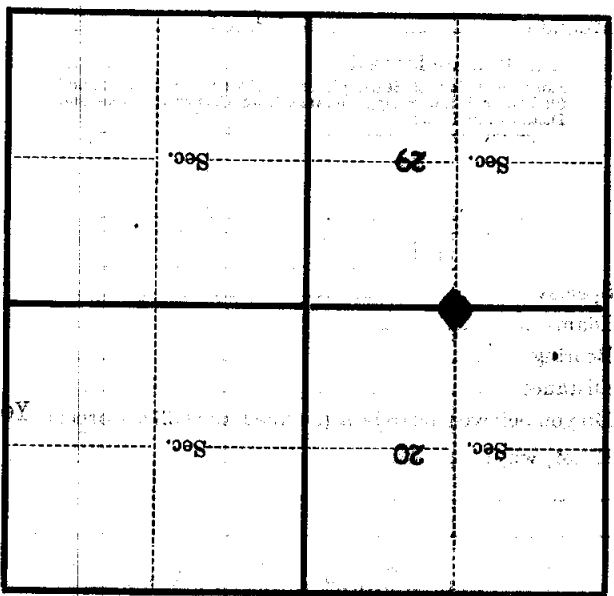
0.60

from which this Corner bears N. 32 E.

side of said tree

tree 11 inches diameter, on the NW

Metal Location Poster is on a white pine



(Make sketch of topography near Corner)

T. 177 N. R. 26 W.

Mer.

8-7

Form 874-B—Revised May, 1918
 U. S. Department of Agriculture
 FOREST SERVICE

R-7

Chippewa NATIONAL FOREST

CORNERS OF THE PUBLIC SURVEY

T. 144 N. R. 26 W. Mer.

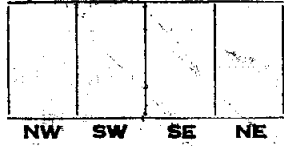
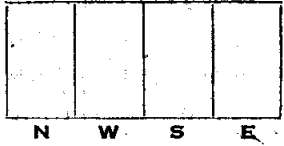
N. G. to 1/4 Corner common to Sections
20, and 29

Corner consists of a _____ (net) in place
 State condition _____

Dimensions above ground _____ inches
 Sketch grooves, letters, figures, or notches, on proper face or edge.

CARDINAL POSITION

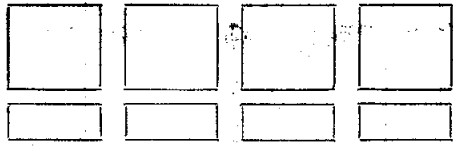
DIAGONAL POSITION



Mound of _____ is located _____

Pits are located _____

Sketch markings of Bearing Trees (or Rocks) in proper box and fill blanks below, giving bearings from Corner to Trees and Distances in Links.



Species _____

Diameter _____

Bearing _____

Distance _____

Do you believe this to be a genuine Land Office Corner? Yes

If not, why? _____

Farrist
 (Signature)

5/2
 (Date)

(Title)

Give any further facts which will aid in finding this corner again. True corner is in small open swamp. Set treated post for W.O. post at base of 11" white pine on small point of land at SW edge of swamp. This is same point recovered by F.S. men in 1927 at which some original rotted landmark B.T.'s were still existent.

chains distant.

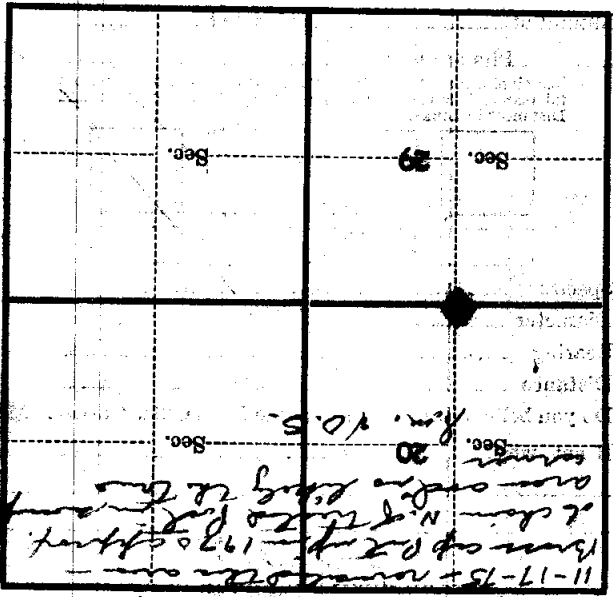
0.60

from which this Corner bears N. 32 E.

side of said tree

tree 11 inches diameter, on the NW

Metal Location Poster is on a white pine



(Make sketch of topography near Corner)