

U. S. Department of Agriculture

FOREST SERVICE

*Posted*

Chippewa NATIONAL FOREST Q 17-18

CORNERS OF THE PUBLIC SURVEY

T. 193 N. R. 31 W. 572 Mer.

Meander Corner common to Sections  
23, and 26

Corner consists of a Press Cuped Pipe (~~not~~) in place

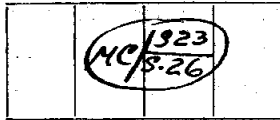
State condition Good

Dimensions above ground 6 inches

Sketch grooves, letters, figures, or notches, on proper face or edge.

CARDINAL POSITION

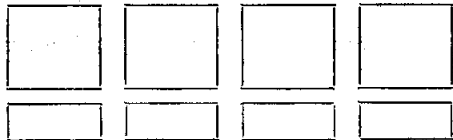
DIAGONAL POSITION



Mound of \_\_\_\_\_ is located \_\_\_\_\_

Pits are located \_\_\_\_\_

Sketch markings of Bearing Trees (or Rocks) in proper box and fill blanks below, giving bearings from Corner to Trees and Distances in Links.



Species P. Oak wood

Diameter 12" 12"

Bearing N. 25 1/2 E. S. 75 E.

L.S. Distance 86 179

Do you believe this to be a genuine Land Office Corner? yes

If not, why? \_\_\_\_\_

J. A. Gjelhaug

(Signature)

Tech. Eng.

(Title)

12/3/39  
(Date)

Corner again.

Give any further facts which will aid in finding this

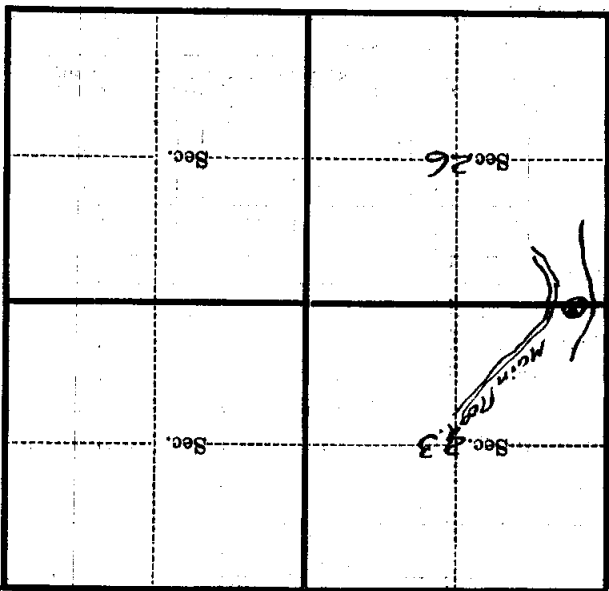
chains distant. *174*

from which this Corner bears *N. 75° W.*

side of *Tree*

tree *12* inches diameter, on the *West*

Metal Location Poster is on a *N. 0° E*



(Make sketch of topography near Corner)

*T. 193N. R. 31W. 5th Mer.*

*R-171B*