

U. S. Department of Agriculture

FOREST SERVICE

*Posted*

*Chippewa* NATIONAL FOREST *K-19*

CORNERS OF THE PUBLIC SURVEY

T. *143N.* R. *31W* *5th* Mer.

*Sixteenth* Corner common to Sections  
 \_\_\_\_\_, \_\_\_\_\_, and *14*

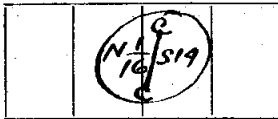
Corner consists of a *Brass Coped Pipe* (not) in place  
 State condition *Good*

Dimensions above ground *5* inches

Sketch grooves, letters, figures, or notches, on proper face or edge.

CARDINAL POSITION

DIAGONAL POSITION



N W S E



NW SW SE NE

Mound of \_\_\_\_\_ is located \_\_\_\_\_

Pits are located \_\_\_\_\_

Sketch markings of Bearing Trees (or Rocks) in proper box and fill blanks below, giving bearings from Corner to Trees and Distances in Links.

<i>N 1/16</i>			
<i>BT</i>			

Species *J. Pine*

Diameter *12"*

Bearing *N. 35° 30' W.*

*415* Distance *9 1/2*

Do you believe this to be a genuine Land Office Corner? *Yes*

If not, why? \_\_\_\_\_

*J.A. Gjelhaug*

(Signature)

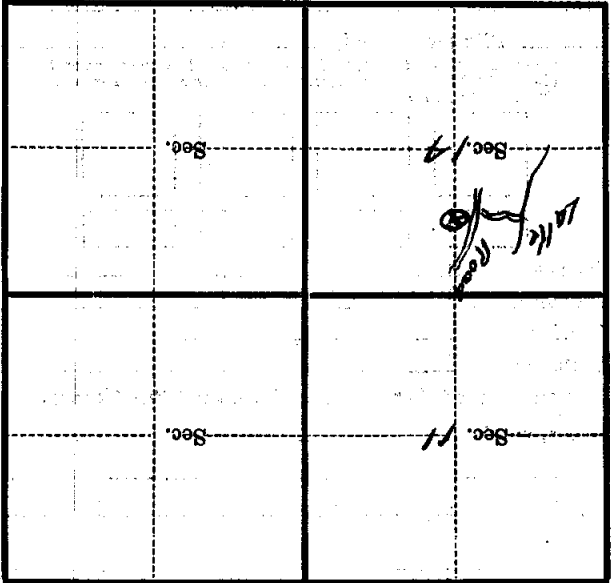
*11/26/39*

(Date)

*Trch. Eng.*

(Title)

Metal Location Poster is on a tree inches diameter, on the side of from which this Corner bears chains distant. Give any further facts which will aid in finding this Corner again.



(Make sketch of topography near Corner)

T. 173N R. 31W 5.74 Mer. R-19