

Form 574-B—Revised May, 1918
U. S. Department of Agriculture
FOREST SERVICE

R-23

P.

Chippewa NATIONAL FOREST

CORNERS OF THE PUBLIC SURVEY

T. 143N R. 29W 5P Mer.

Corner common to Sections 24, 25, and

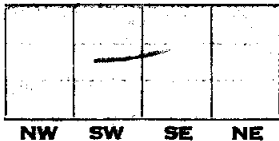
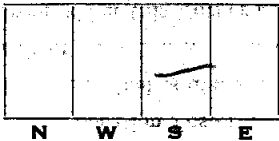
Corner consists of a sw road (not) in place
State condition

Dimensions above ground _____ inches

Sketch grooves, letters, figures, or notches, on proper face or edge.

CARDINAL POSITION

DIAGONAL POSITION



Mound of _____ is located _____

Pits are located _____

Sketch markings of Bearing Trees (or Rocks) in proper box and fill blanks below, giving bearings from Corner to Trees and Distances in Links.



Species _____

Diameter _____

Bearing _____

Distance _____

Do you believe this to be a genuine Land Office Corner?

If not, why? _____

Robert Perdue
4/2/35 (Date) *Estimator* (Title)

R-23

U. S. Department of Agriculture
Forest Service

Information
Notes

Corner again:

Give any further facts which will aid in finding this

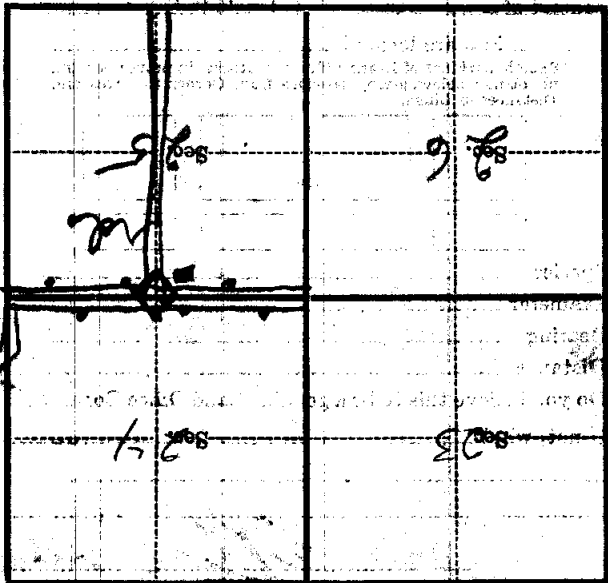
chains distant.

from which this Corner bears

side of

tree ~~8~~ inches diameter, on the NE

Metal Location Poster is on a rock



(Make sketch of topography near Corner)

T. 143N R. 29W
5P NE
M&R-23