

U. S. Department of Agriculture

FOREST SERVICE

L-25P

Chippewa

NATIONAL FOREST

CORNERS OF THE PUBLIC SURVEY

T. 143 N R. 28 W 5 Mer.

18 1/4 13 Corner common to Sections, and

Corner consists of a Wooden stake (set) in place

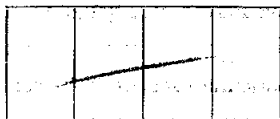
State condition Good

Dimensions above ground 3' inches

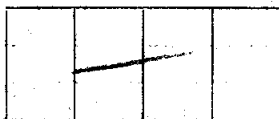
Sketch grooves, letters, figures, or notches, on proper face or edge.

CARDINAL POSITION

DIAGONAL POSITION



N W S E

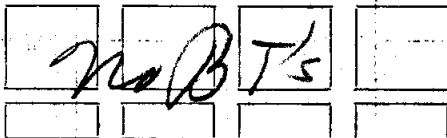


NW SW SE NE

Mound of is located

Pits are located

Sketch markings of Bearing Trees (or Rocks) in proper box and fill blanks below, giving bearings from Corner to Trees and Distances in Links.



Species

Diameter

Bearing

Distance

Do you believe this to be a genuine Land Office Corner? No

If not, why? No original B.T.'s

merely wooden stake

on compass line

signed R.M. Perrelee

3/29/33

(Date)

(Signature)

(Title)

1/4 mile north
of road from
8 1/2 1/2
fence line

Corner again.

Give any further facts which will aid in finding this

0.20 chains distant.

from which this Corner bears

S 80°

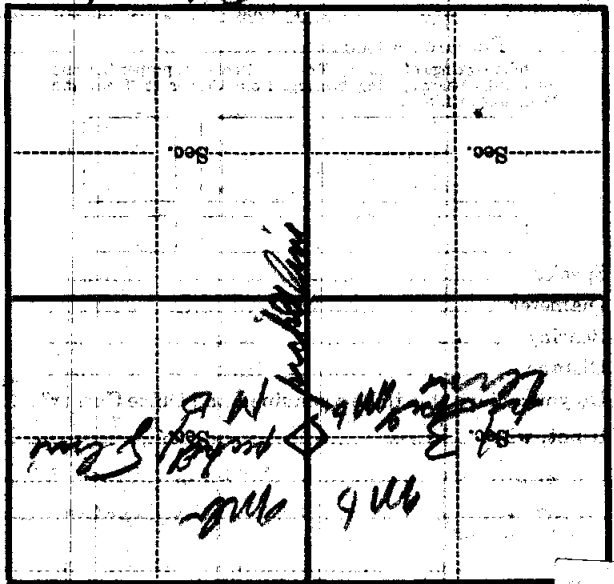
side of

tree

tree inches diameter, on the

Metal Location Poster is on a

Admission



(Make sketch of topography near Corner)

Mer. 7-25

1/3 N R 21 W