

U. S. Department of Agriculture
FOREST SERVICE

P.

Chip Purchase NATIONAL FOREST

N-9

CORNERS OF THE PUBLIC SURVEY

T. 143 R. 26 S. 15 Mer.

Section 17 Corner common to Sections

16, 17, 20, and 21

Corner consists of a Iron Pipe (not) in place

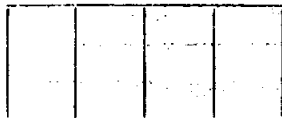
State condition Good

Dimensions above ground 12" inches

Sketch grooves, letters, figures, or notches, on proper face or edge.

CARDINAL POSITION

DIAGONAL POSITION



N W S E



NW SW SE NE

Mound of _____ is located _____

Pits are located _____

Sketch markings of Bearing Trees (or Rocks) in proper box and fill blanks below, giving bearings from Corner to Trees and Distances in Links.



Species _____

Diameter _____

Bearing _____

Distance _____

Do you believe this to be a genuine Land Office Corner? Yes

If not, why? _____

O. H. [Signature]
Feb 27, 1935 (Date)
[Signature]

Faint, illegible text on ruled lines at the top of the page.

Corner again.

Give any further facts which will aid in finding this

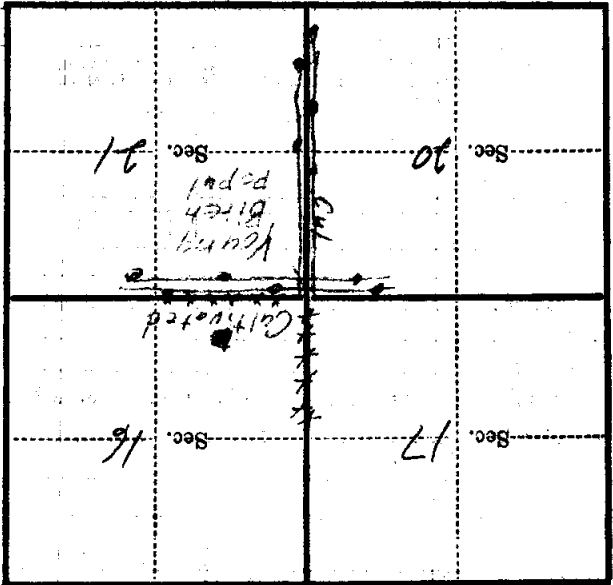
chains distant.

from which this Corner bears

side of *Road cut*

tree... inches diameter, on the *South East*

Metal Location Poster is on a *Telephone Post*



(Make sketch of topography near Corner)