

U. S. Department of Agriculture
FOREST SERVICE

R-13

Chippewa NATIONAL FOREST

CORNERS OF THE PUBLIC SURVEY

T. 142 N. R. 80 W 5th Mer.

Corner common to Sections 21, 22, 27, and 28

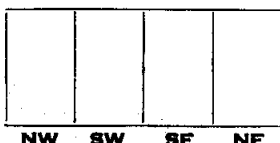
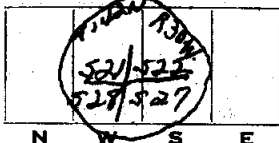
Corner consists of a 3" I.P.W/brass cap (not) in place
State condition Good

Dimensions above ground 10 inches

Sketch grooves, letters, figures, or notches, on proper face or edge.

CARDINAL POSITION

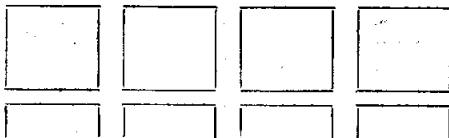
DIAGONAL POSITION



Mound of _____ is located _____

Pits are located _____

Sketch markings of Bearing Trees (or Rocks) in proper box and fill blanks below, giving bearings from Corner to Trees and Distances in Links.



Species _____

Diameter _____

Bearing _____

Distance _____

Do you believe this to be a genuine Land Office Corner? Yes

If not, why? _____

Carl Steadland
(Signature)

Sept. 10, 1936
(Date)

Const. Fer
(Title)

Station No. 1000

Date 10/10/60

Section No. 1000

Sheet No. 1000

Scale 1:1000

Projection

Zone

Corner

Corner again.

Give any further facts which will aid in finding this

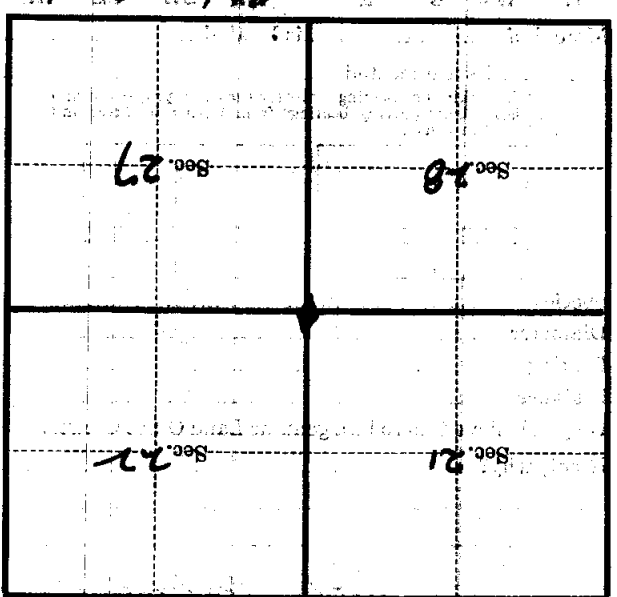
chains distant.

from which this Corner bears

side of *of corner*

tree *3* inches diameter, on the

Metal Location Poster is on a *corner post*



(Make sketch of topography near Corner)

T. W. N. R. 30W
5th R-13 Mer.

U. S. Department of Agriculture
FOREST SERVICE

R-13

Chippewa..... NATIONAL FOREST

CORNERS OF THE PUBLIC SURVEY

T. 142 N R. 30 W 5th Mer.

..... Corner common to Sections

21, 22, 27, and 28

Corner consists of a 2" I.P.W./brass cap (set) in place

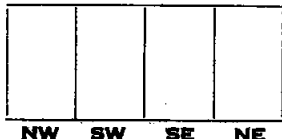
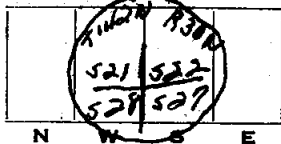
State condition Good

Dimensions above ground 10 inches

Sketch grooves, letters, figures, or notches, on proper face or edge.

CARDINAL POSITION

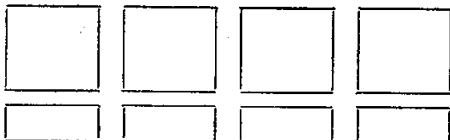
DIAGONAL POSITION



Mound of is located

..... Pits are located

Sketch markings of Bearing Trees (or Rocks) in proper box and fill blanks below, giving bearings from Corner to Trees and Distances in Links.



Species

Diameter

Bearing

Distance

Do you believe this to be a genuine Land Office Corner? Yes

If not, why?

.....

.....

.....

.....

.....

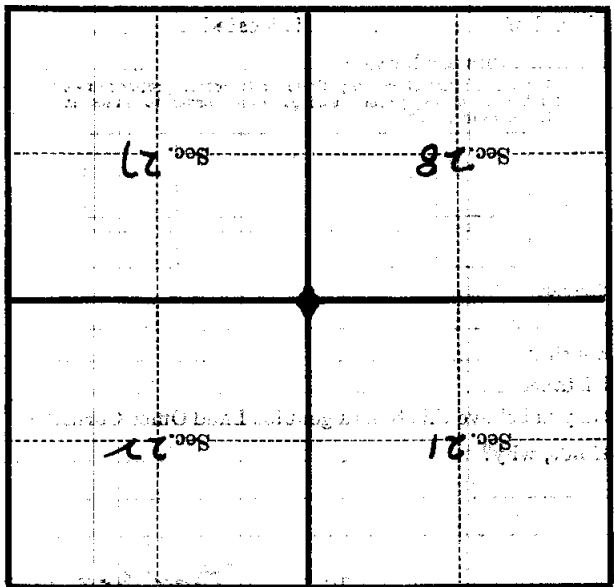
.....

.....

Sept. 10, 1936
(Date)

Carl Steadland
(Signature)
Const. For.
(Title)

Corner again.
 Give any further facts which will aid in finding this
 chains distant.
 from which this Corner bears
 side of *of corner*
 tree *3* inches diameter, on the
 Metal Location Poster is on a *Cedar Post*



(Make sketch of topography near Corner)

T. 142 N R. 30 W
 5th Mer.
 R-13