

U. S. Department of Agriculture
FOREST SERVICE

V-17

Posted

Chippewa NATIONAL FOREST

CORNERS OF THE PUBLIC SURVEY

T. 142N R. 28W 57A Mer.

52 Corner common to Sections

34, 35, 27, and 26

Corner consists of a ? ~~(rod)~~ in place

State condition ?

Dimensions above ground _____ inches

Sketch grooves, letters, figures, or notches, on proper face or edge.

CARDINAL POSITION

DIAGONAL POSITION

--	--	--	--

N W S E

--	--	--	--

NW SW SE NE

Mound of _____ is located _____

Pits are located _____

Sketch markings of Bearing Trees (or Rocks) in proper box and fill blanks below, giving bearings from Corner to Trees and Distances in Links.

T142N R28W S27

T142N R28W S26

--

--

B.T.

B.T.

--

--

Species Ash Sp Ash Sp

Diameter 6" 6"

Bearing N50°W N37°E

Distance 29.5 29.5

Do you believe this to be a genuine Land Office Corner? yes

~~It is not a corner~~

Dist. and bearing approx as corner is in road

Samuel Rose Jr.

(Signature)

Estimator

(Title)

11 Mar 22
(Date)

Corner again.

Give any further facts which will aid in finding this

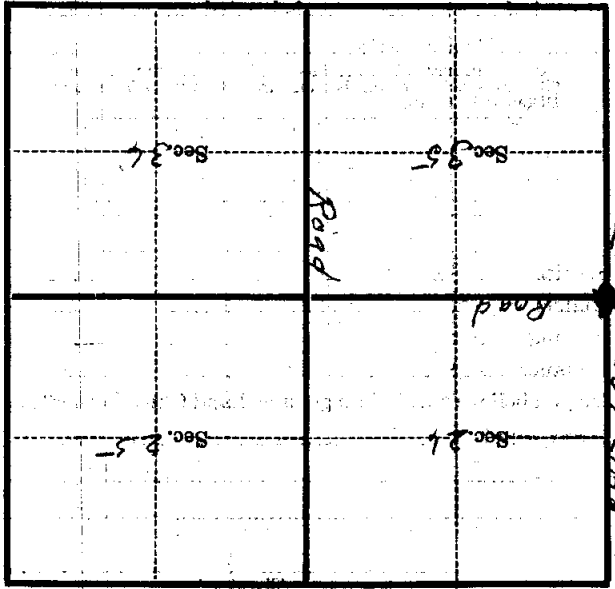
29.5 chains distant.

from which this Corner bears S 50° E

side of stump

4 inches diameter, on the SE

Metal Location Poster is on a Fish Stp



(Make sketch of topography near Corner)

T. 142 N. R. 28 W.

5 + 4

Mer. V-17