

U. S. Department of Agriculture
FOREST SERVICE

P.
R 19

Chippewa Purchase NATIONAL FOREST

CORNERS OF THE PUBLIC SURVEY

T. 142 R. 27 5th Mer.

Corner common to Sections

23, and 26

Corner consists of a Cedar Post (not) in place

State condition Good

Dimensions above ground 24 inches

Sketch grooves, letters, figures, or notches, on proper face or edge.

CARDINAL POSITION

DIAGONAL POSITION

N	W	S	E
1/4 525		1/4 525	

NW	SW	SE	NE

Mound of _____ is located _____

Pits are located _____

Sketch markings of Bearing Trees (or Rocks) in proper box and fill blanks below, giving bearings from Corner to Trees and Distances in Links.

Species _____

Diameter _____

Bearing _____

Distance _____

Do you believe this to be a genuine Land Office Corner? No

If not, why? _____

County Survey

Year 1915

O. G. Pearson
(Signature)

3/6/35
(Date)

Eng
(Title)

Post is 20 feet East of Center of Road

Corner again

Give any further facts which will aid in finding this

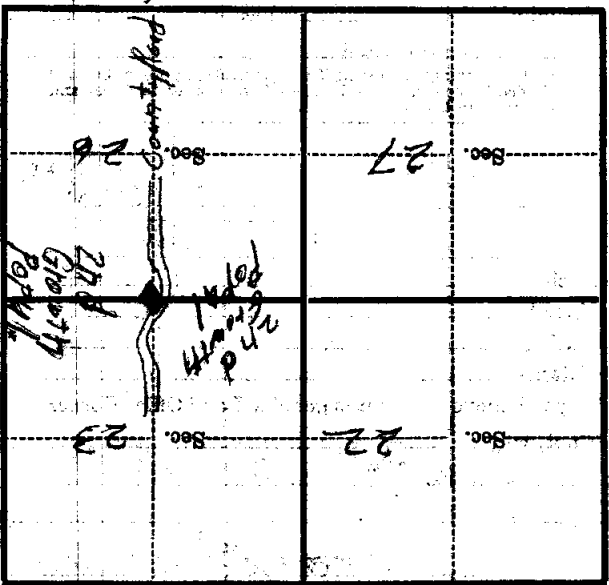
chain distant.

from which this Corner bears

side of

tree inches diameter, on the

Metal Location Poster is on the 1/4 Post,



(Make sketch of topography near Corner)

T. 142 R. 27 5th Mer. R-19