

Form 874-S—Revised May, 1918
U. S. Department of Agriculture
FOREST SERVICE

V13

Chippewa NATIONAL FOREST

CORNERS OF THE PUBLIC SURVEY

T. 142 R. 27 5 Mer.

Section Corner common to Sections

27, 28, 33, and 34

Corner consists of a wooden stake (11) in place

State condition poor - tied to tree

Dimensions above ground 187 inches

Sketch grooves, letters, figures, or notches, on proper face or edge.

CARDINAL POSITION

DIAGONAL POSITION

--	--	--	--

N W S E

S.	S.	S.	S.
28	33	34	27

NW SW SE NE

Mound of _____ is located _____

Pits are located _____

Sketch markings of Bearing Trees (or Rocks) in proper box and fill blanks below, giving bearings from Corner to Trees and Distances in Links.

Species NONE

Diameter _____

Bearing _____

Distance _____

Do you believe this to be a genuine Land Office Corner? Yes

If not, why? _____

R. T. Defant
Raymond T. Defant

(Signature)

Jr. Civil Engineer

(Title)

6-17-40

(Date)

GRIBBONS

Center line of road.

Corner of road 50 links N of

Corner again. - tied to same

Give any further facts which should be included in finding this

0.50 - same distance

from which this corner bears

South

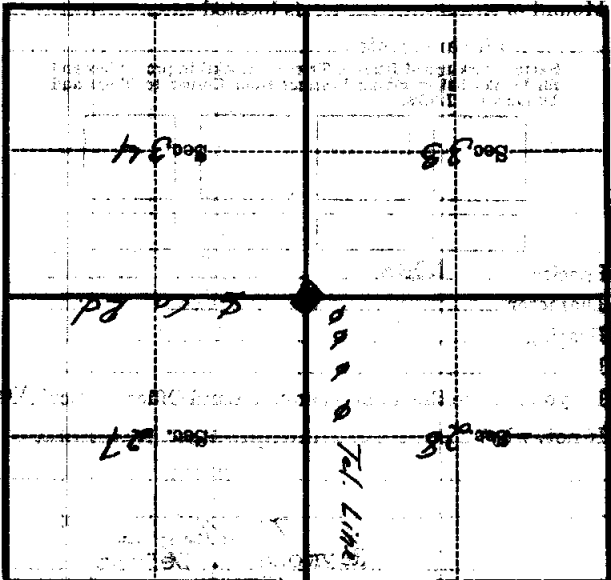
side of road

tree 4" inches diameter, on the

North

Metal Location Marker is on a

Station



8-11 - (Make sketch of topography near corner)