

Form 374-0—Revised May, 1915
U. S. Department of Agriculture
FOREST SERVICE

A4 P.

NATIONAL FOREST

CORNERS OF THE PUBLIC SURVEY

T. 142 N R. 27 W 5 Mer.

E 1/4

Corner common to Sections

31, 6, and

Corner consists of a Iron Pipe (brass top) (not) in place

State condition good

Dimensions above ground 9 inches

Sketch grooves, letters, figures, or notches, on proper face or edge.

CARDINAL POSITION

DIAGONAL POSITION

<u>S 31</u>	<u>S 6</u>
<u>T 142 N</u>	<u>T 142 N</u>
<u>R 27 W</u>	<u>R 27 W</u>
N	W
S	E

NW	SW	SE	NE

Mound of _____ is located _____

Pits are located _____

Sketch markings of Bearing Trees (or Rocks) in proper box and fill blanks below, giving bearings from Corner to Trees and Distances in Links.

Species _____

Diameter _____

Bearing _____

Distance _____

Do you believe this to be a genuine Land Office Corner? Yes

If not, why? _____

A. G. Matuza

(Signature)

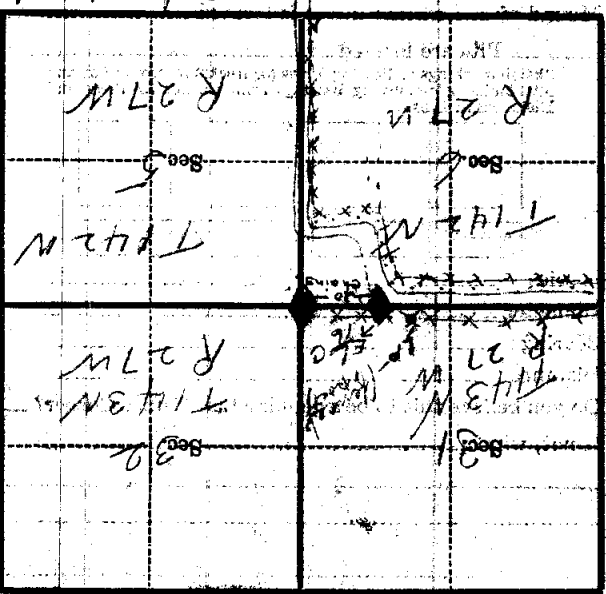
Estimator

(Title)

4-5-35
(Date)

UNITED STATES DEPARTMENT OF THE INTERIOR
BUREAU OF LAND MANAGEMENT
CORNER RECORD

Corner Record
Give any further facts which will aid in finding this
chain distant
62
from which this Corner bears
S 45° E
side of
tree 5 inches diameter, on the South
Metal Location Poster is on a
Columbia Mt. Highway



(Make sketch of topography near Corner)

U. S. Department of Agriculture
FOREST SERVICE

A-4

CHIPPEWA NATIONAL FOREST

CORNERS OF THE PUBLIC SURVEY

T. 142N R. 27W 5th. Mer.
E 1/16 Corner common to Sections
31, 6, and

Corner consists of a iron pipe brass ~~top~~ in place
State condition good

Dimensions above ground 9" inches

Sketch grooves, letters, figures, or notches, on proper face or edge.

CARDINAL POSITION

DIAGONAL POSITION

S61	S6
T143N	T142N
R27W	R27W
N	E

NW	SW	SE	NE

Mound of _____ is located _____

Pits are located _____

Sketch markings of Bearing Trees (or Rocks) in proper box and fill blanks below, giving bearings from Corner to Trees and Distances in Links.

Species _____

Diameter _____

Bearing _____

Distance _____

Do you believe this to be a genuine Land Office Corner? Yes

If not, why? _____

A.G. Matuza

(Signature)

Estimator

(Title)

4/5/35

(Date)

Corner again.

Give any further facts which will aid in finding this

chains distant.

from which this Corner bears

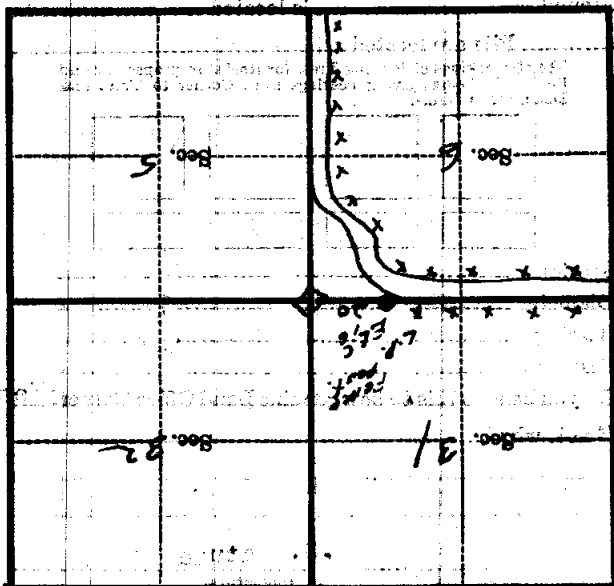
S 45° E

side of

post

tree 5 inches diameter, on the south

Metal Location Post is on a cedar post (fence)



(Make sketch of topography near Corner)

A-4