

U. S. Department of Agriculture
FOREST SERVICE

J-3

Chippewa Purchase NATIONAL FOREST

CORNERS OF THE PUBLIC SURVEY

T. 142 R. 27 5th Mer.

1/4 Corner common to Sections

7, and 18

Corner consists of a Iron Stake in place

State condition Nat. Sec. 17

Dimensions above ground 8 inches

Sketch grooves, letters, figures, or notches, on proper face or edge.

CARDINAL POSITION

DIAGONAL POSITION

offset Post-Cedar							
1/4 S		1/4 S					
N	W	S	E	NW	SW	SE	NE

Mound of _____ is located _____

Pits are located _____

Sketch markings of Bearing Trees (or Rocks) in proper box and fill blanks below, giving bearings from Corner to Trees and Distances in Links.

Species _____

Diameter _____

Bearing _____

Distance _____

Do you believe this to be a genuine Land Office Corner? NO

If not, why? County Survey

O. G. Quaintance

(Signature)

3/7/35

(Date)

(Title)

Center of Road. Metal location
1/4 ch SE of offset Post.
Offset Cedar Post
Bound & App lch East of

Corner again.

Give any further facts which will aid in finding this

chain's distant.

from which this Corner bears

NW

side of

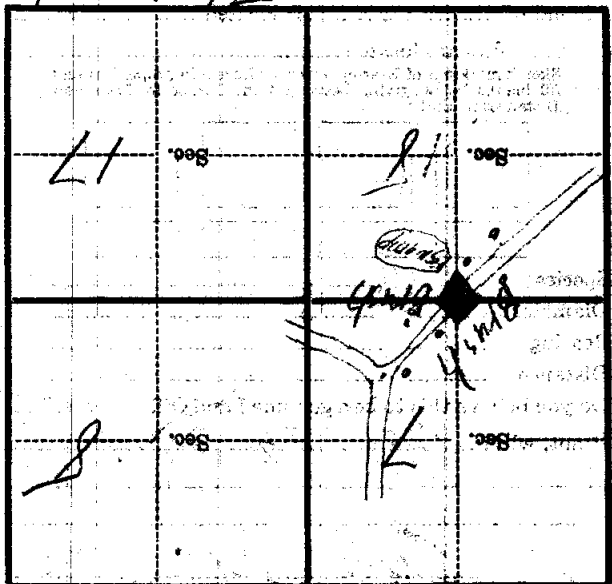
County Road

inches diameter, on the

East

Metal Location Poster is on a

Telapone hole



(Make sketch of topography near Corner)