

Form 874-9—Revised May, 1918
U. S. Department of Agriculture
FOREST SERVICE

V-17

~~CHIPPENAW~~ NATIONAL FOREST

CORNERS OF THE PUBLIC SURVEY

T. 142 R. 20 Mer.

Section 26, 27, 28, and 29
Corner common to Sections

Corner consists of a Rock (Set) in place

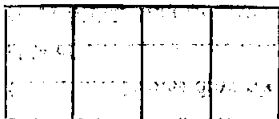
State condition good

Dimensions 2 1/2 ground 6 inches

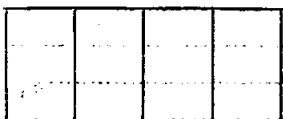
Sketch grooves, letters, figures, or notches, on proper face or edge.

CARDINAL POSITION

DIAGONAL POSITION



N W S E



NW SW SE NE

Mound of _____ is located _____

Pits are located _____

Sketch markings of Bearing Trees (or Rocks) in proper box and fill blanks below, giving bearings from Corner to Trees and Distances in Links.



Species _____

Diameter _____

Bearing N 0 N E

Distance _____

Do you believe this to be a genuine Land Office Corner? No

If not, why? County Corner

R. T. DeFaut
Raymond T. DeFaut

8-8-40

Jr. (Civil) Engineer

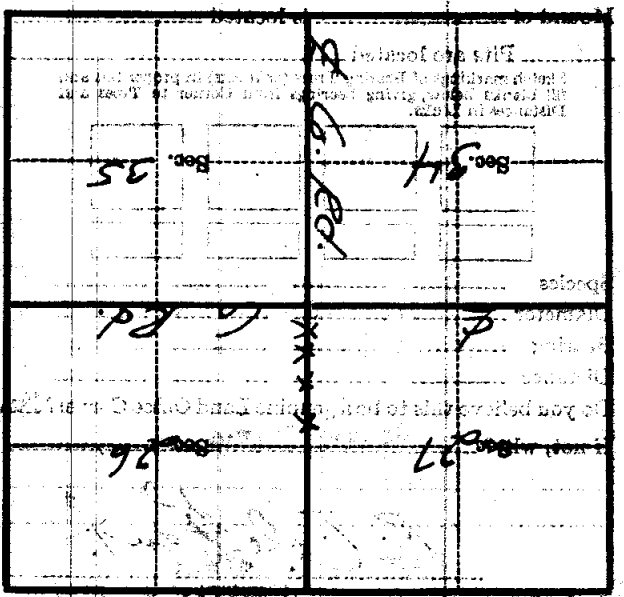
(Date)

(Title)

UNITED STATES DEPARTMENT OF THE INTERIOR
BUREAU OF LAND MANAGEMENT
WYOMING

Corner again.
I changed into large flat rock by
County Surveyor.

Give any further facts which will aid in finding the
change distant.
from which this Corner bears
South
feet
inches diameter, on the
Metal Location Post is on a
Corner Post



Form 874-9—Revised May, 1918
U. S. Department of Agriculture
FOREST SERVICE

V-17

~~CHIPPENAW~~ NATIONAL FOREST

CORNERS OF THE PUBLIC SURVEY

T. 142 R. 26 5 Mer.

Section Corner common to Sections

26, 27, 34, and 35

Corner consists of a rock (unit) in place

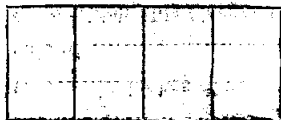
State condition good

Dimensions below ground 6 inches

Sketch grooves, letters, figures, or notches, on proper face or edge.

CARDINAL POSITION

DIAGONAL POSITION



N W S E

NW SW SE NE

Mound of is located

is located

Sketch markings of Bearing Trees (or Rocks) in proper box and fill blanks below, giving bearings from Corner to Trees and Distances in Links.



Species

Diameter

Bearing N 0 N E

Distance

Do you believe this to be a genuine Land Office Corner? No.

If not, why? County Corner

R. T. DeFaut
Raymond T. DeFaut

(Signature)

Jr. Civil Engineer

(Title)

3-5-40

(Date)

I shipped into large flat rock by
County Surveyor.

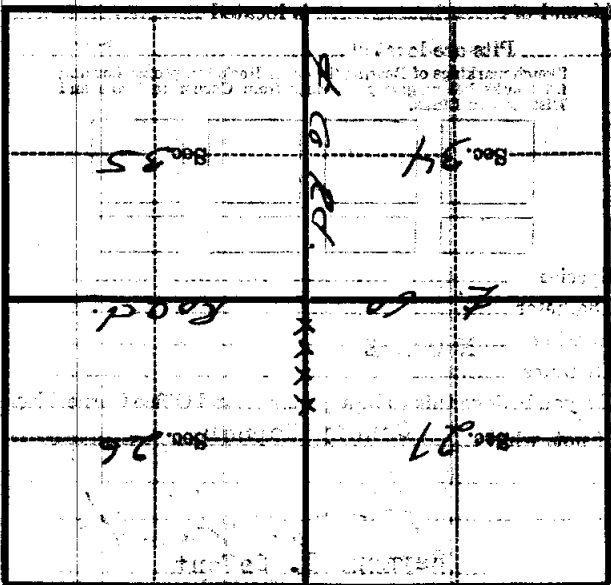
Give any further facts which will aid in finding this

corner distant.

from which this corner bears South

tree inches diameter, on the

Metal Location Post is on a large post



(Make sketch of topography near Corner)