

U. S. Department of Agriculture
FOREST SERVICE

R-7

CHIPPEWA NATIONAL FOREST

CORNERS OF THE PUBLIC SURVEY

T. 148 R. 26 S. 5 Mer.

1/4

Corner common to Sections

20

and 21

Corner consists of a wooden ~~post~~ in place

State condition poor

Dimensions above ground 54" inches

Sketch grooves, letters, figures, or notches, on proper face or edge.

CARDINAL POSITION

DIAGONAL POSITION

--	--	--	--

N W S E

--	--	--	--

NW SW SE NE

Mound of _____ is located _____

Pits are located _____

Sketch markings of Bearing Trees (or Rocks) in proper box and fill blanks below, giving bearings from Corner to Trees and Distances in Links.

Species NONE

Diameter _____

Bearing _____

Distance _____

Do you believe this to be a genuine Land Office Corner? No.

If not, why? County Corner

R. T. De Gant

(Signature)

Jr. Civil Eng.

(Title)

3-5-40

(Date)

NOT FOUND 3.29-27.1M
Corner again.

Give any further facts which will aid in finding this

chain's distant.

from which this Corner bears

side of

tree inches diameter, on the

Metal Location Posters on a

<p>Sec.</p>	<p>Sec.</p>	<p>Sec.</p>	<p>Sec.</p>
<p>Sec.</p>	<p>Sec.</p>	<p>Sec.</p>	<p>Sec.</p>

29

R-7

U. S. Department of Agriculture
FOREST SERVICE

CHIPPEWA NATIONAL FOREST

CORNERS OF THE PUBLIC SURVEY

T. 142 R. 26 5 Mer.
1/4 Corner common to Sections

20, and 29

Corner consists of a wooden ~~stone~~ in place
State condition poor

Dimensions above ground 36" inches

Sketch grooves, letters, figures, or notches, on proper face or edge.

CARDINAL POSITION

DIAGONAL POSITION

N	W	S	E

NW	SW	SE	NE

Mound of _____ is located _____

Pits are located _____

Sketch markings of Bearing Trees (or Rocks) in proper box and fill blanks below, giving bearings from Corner to Trees and Distances in Links.

Species NONE

Diameter _____

Bearing _____

Distance _____

Do you believe this to be a genuine Land Office Corner? No.

If not, why? County Corner

R. T. De Gant

(Signature)

J. Civil Eng.

(Title)

3-5-40
(Date)

Section 2

Survey

Section

Corner

18

18

18

Corner

Corner again.

Give any further facts which will aid in finding the

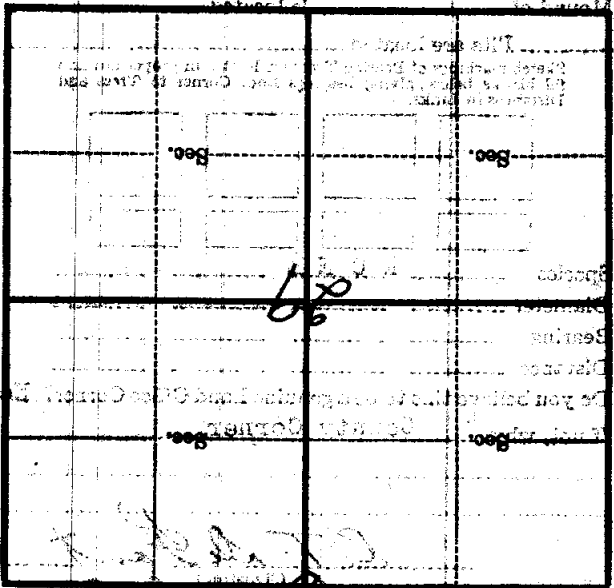
corner distant.

From which this corner bears

side of trees

tree 3 inches diameter, on the N.E.

Metal Location Poster is on a



Make sketch of (especially near corner)