

A-21

142-25

01

WEST

CORNERS OF THE PUBLIC SURVEY

T141-142N R. 25W 5th. Mer. Section

1, 2, (35), and 36

Corner consists of a Scribed cedar 10" in place State condition Good

Dimensions above ground 6 x 6 x 36"

Sketch grooves, letters, figures, or notches, on proper face or edge

CARDINAL POSITION

DIAGONAL POSITION

--	--	--	--

T141N	R25W	S35
T142N	R25W	S36

N W S E

NW SW SE NE

Mound of \_\_\_\_\_ is located \_\_\_\_\_

Pits are located \_\_\_\_\_

Sketch markings of Bearing Trees (or Rocks) in proper box and fill blanks below, giving bearings from Corner to Trees and Distances in Links.


Species \_\_\_\_\_

Diameter \_\_\_\_\_

Bearing \_\_\_\_\_

Distance \_\_\_\_\_

Do you believe this to be a genuine Land Office Corner?

If not, why? *C. L. W.*

T. B. Williams

(Signature)

June 12, 1937

(Date)

R. Asst. To

(Title)



U. S. Department of Agriculture  
FOREST SERVICE

A-  
~~2~~ 21

CHIPPEWA NATIONAL FOREST

CORNERS OF THE PUBLIC SURVEY

T. 142 R. 25 5 Mer.  
Section Corner common to Sections

35, 36, 1, and 2

Corner consists of a Stake ~~150~~ in place

State condition loose--fair

Dimensions above ground 30" inches

Sketch grooves, letters, figures, or notches, on proper face or edge.

CARDINAL POSITION

DIAGONAL POSITION

N	W	S	E

S	S	S	S
35	2	1	36
NW	SW	SE	NE

Mound of \_\_\_\_\_ is located \_\_\_\_\_

Pits are located \_\_\_\_\_

Sketch markings of Bearing Trees (or Rocks) in proper box and fill blanks below, giving bearings from Corner to Trees and Distances in Links.

S 1			
B.T.			

Species Maple

Diameter 10"

Bearing S 87 E

Distance 24

Do you believe this to be a genuine Land Office Corner? Yes

If not, why? \_\_\_\_\_

*Raymond T. DeFant*  
Raymond T. DeFant

(Signature)

Jr. Civil Engineer

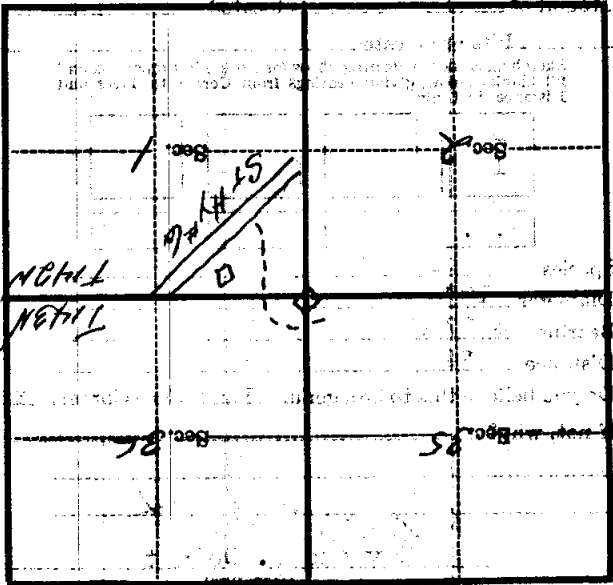
(Title)

2-12-40

(Date)

Corner again.  
Corner is 99 feet North of approximate  
corner.

Metal Location Poster is on a  
tree 5 inches diameter, on the  
side of Tree  
at corner  
from which this Corner bears  
Give any further facts which will aid in finding this  
Corner again.



(Make sketch of topography near Corner)