

Form 874-S—Revised May, 1918  
U. S. Department of Agriculture  
FOREST SERVICE

X5

CHIPPEWA NATIONAL FOREST

CORNERS OF THE PUBLIC SURVEY

T. 142 R. 25 Mer.

$\frac{1}{4}$  Corner common to Sections  
31, and 32

Corner consists of a pipe (not) in place

State condition good

Dimensions above ground 12" Inches

Sketch grooves, letters, figures, or notches, on proper face or edge.

CARDINAL POSITION

DIAGONAL POSITION



Mound of is located

Pits are located

Sketch markings of Bearing Trees (or Rocks) in proper box and fill blanks below, giving bearings from Corner to Trees and Distances in Links.

1/9  
S-32

B T

Species Aspen

Diameter 10"

Bearing South

Distance 20

Do you believe this to be a genuine Land Office Corner? No

If not, why? Co. Corner

R. T. Defant  
(Signature)

D. E.  
(Title)

7-1-40  
(Date)

Corner again.

Give any further facts which will aid in finding this

chains distant.

from which this Corner bears

N

side of

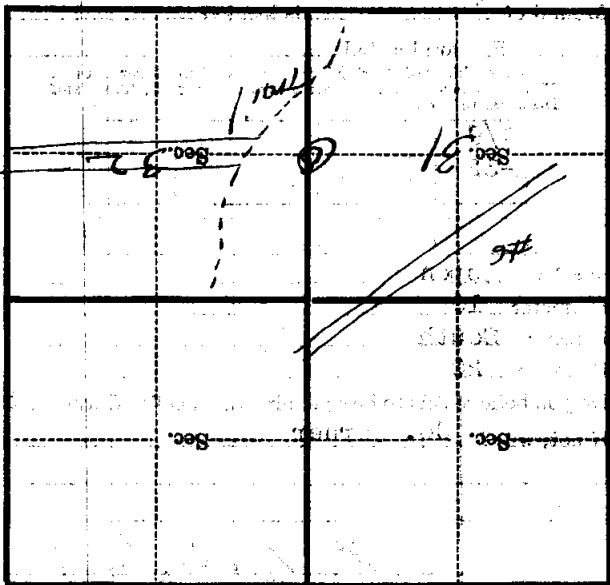
tree

tree 10 inches diameter, on the

N

Metal Location Poster is on a

BT Aspen



(Make sketch of topography near Corner)

T-1-10

T. 148

R. 25

Mer.

X-5

Form 574-9—Revised May, 1918  
U. S. Department of Agriculture  
FOREST SERVICE

X-5

CHIPPENAW NATIONAL FOREST

CORNERS OF THE PUBLIC SURVEY

T. 148 R. 80 Mer.

Corner common to Sections 31, and 32

Corner consists of a pipe (not) in place

State condition good

Dimensions above ground 12" inches

Sketch grooves, letters, figures, or notches, on proper face or edge.

CARDINAL POSITION

DIAGONAL POSITION

N	W	S	E

NW	SW	SE	NE

Mound of \_\_\_\_\_ is located \_\_\_\_\_

Pits are located \_\_\_\_\_

Sketch markings of Bearing Trees (or Rocks) in proper box and fill blanks below, giving bearings from Corner to Trees and Distances in Links.

<u>1/2</u> <u>3-32</u>			
<u>BT</u>			

Species Aspen

Diameter 10"

Bearing South

Distance 20

Do you believe this to be a genuine Land Office Corner? Yes

If not, why? Co. Corner

*R. DeFaut*

(Signature)

7-1-40

(Date)

*J. E.*

(Title)

Metal Location Poster is on a **10** inches diameter, on the **tree** side of **300** from which this Corner bears **10** chains distant.

Give any further facts which will aid in finding this Corner again.

	Sec.		Sec.
	Sec.		Sec.

(Make sketch of topography near Corner)