

Form 874-9—Revised May, 1918
U. S. Department of Agriculture
FOREST SERVICE

EF5

Chippewa NATIONAL FOREST

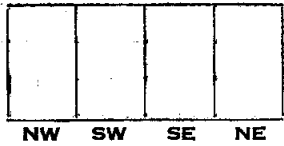
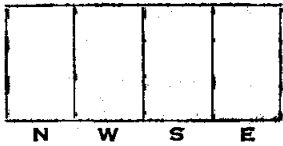
CORNERS OF THE PUBLIC SURVEY

T. 14 N. R. 31 W. 5th Mer.

Meander Corner common to Sections
7, and 8

Corner consists of a 2" I. P. (not) in place
State condition Good

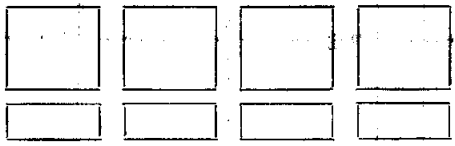
Dimensions above ground 9 inches
Sketch grooves, letters, figures, or notches, on proper face or edge.
CARDINAL POSITION DIAGONAL POSITION



Mound of _____ is located _____

Pits are located _____

Sketch markings of Bearing Trees (or Rocks) in proper box and fill blanks below, giving bearings from Corner to Trees and Distances in Links.



Species _____

Diameter _____

Bearing _____

Distance _____

Do you believe this to be a genuine Land Office Corner? No

If not, why? County Corner

Paul J. Steadland
(Signature)

6/15/37
(Date)

Foreman 248
(Title)

Corner again.

Give any further facts which will aid in finding this

chains distant.

0.16

from which this Corner bears

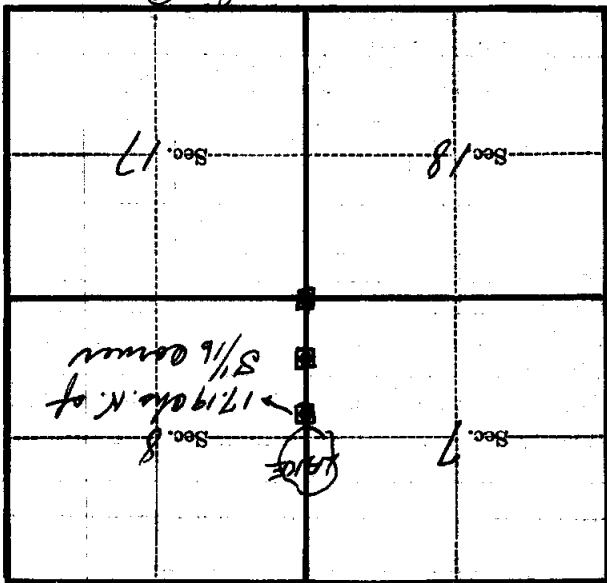
NTW

side of

tree inches diameter, on the

Metal Location Poster is on a

White Oak



(Make sketch of topography near Corner)

Mer.

5th

R. 31W

T. 141N