

Form 874-9—Revised May, 1918  
U. S. Department of Agriculture  
FOREST SERVICE

NATIONAL FOREST

CORNERS OF THE PUBLIC SURVEY

T/40+141N R. 31 W 5<sup>th</sup> Mer.

Section Corner common to Sections

33, 34, 3, and 4

Corner consists of an iron pipe (not) in place

State condition good

Dimensions above ground 2x 24 inches

Sketch grooves, letters, figures, or notches, on proper face or edge.

CARDINAL POSITION

DIAGONAL POSITION

None			
------	--	--	--

N W S E

--	--	--	--

NW SW SE NE

Mound of \_\_\_\_\_ is located \_\_\_\_\_

Pits are located \_\_\_\_\_

Sketch markings of Bearing Trees (or Rocks) in proper box and fill blanks below, giving bearings from Corner to Trees and Distances in Links.


Species None

Diameter

Bearing

Distance

Do you believe this to be a genuine Land Office Corner? No

If not, why?

County Resurvey corner

Dorman J. Sutton

(Signature)

Engineer

(Title)

3-29-35

(Date)

Corner again.

Give any further facts which will aid in finding this

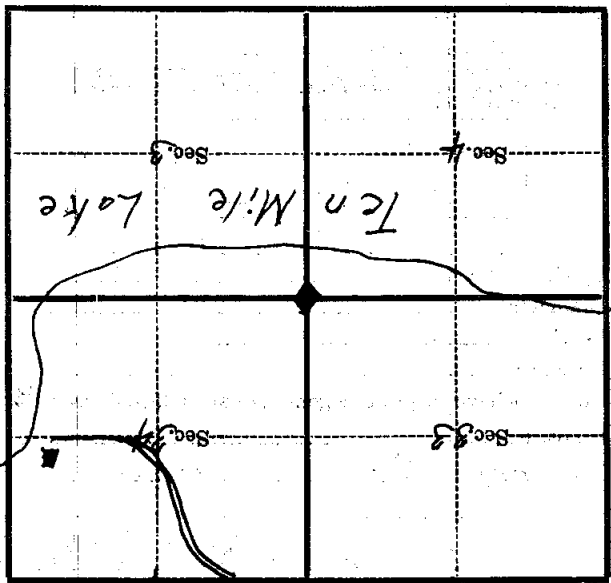
10 chains distant.

from which this Corner bears N 40° E

side of tree

tree 3 inches diameter, on the N E

Aspen Metal Location Poster is on an



(Make sketch of topography near Corner)

T. 140 R. 11 N. R. 31 W. 5th Mer.