

U. S. Department of Agriculture
FOREST SERVICE

Chippewa NATIONAL FOREST

CORNERS OF THE PUBLIC SURVEY

T. ~~141 N~~ ~~44 N~~ R. 31 W. + 32 W 5th Mer.
Section _____ Corner common to Sections

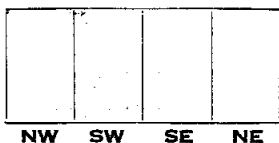
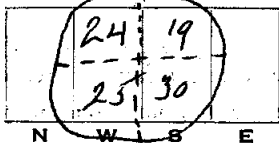
24, 19, 25, and 30

Corner consists of a *cap. iron pipe* in place
State condition *good*

Dimensions above ground *2 1/2 x 1/2* inches
Sketch grooves, letters, figures, or notches, on proper face or edge.

CARDINAL POSITION

DIAGONAL POSITION



Mound of _____ is located _____

Pits are located _____

Sketch markings of Bearing Trees (or Rocks) in proper box and fill blanks below, giving bearings from Corner to Trees and Distances in Links.

Species *Nine* _____

Diameter _____

Bearing _____

Distance _____

Do you believe this to be a genuine Land Office Corner? *yes*

If not, why? _____

Darmond Sutton

(Signature)

Engineer
(Title)

3-22-35
(Date)

Corner again.

Give any further facts which will aid in finding this

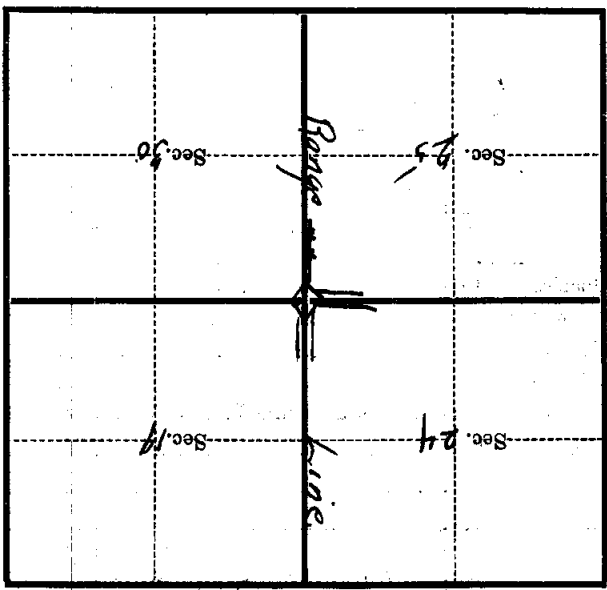
chains distant.

from which this Corner bears *56° E*

side of *pole*

8 inches diameter, on the *SE*

Metal Location Poster is on a *Telephone pole*



(Make sketch of topography near Corner)

Mer.

T141N R. 81 or 82W 5th