

U. S. Department of Agriculture
FOREST SERVICE

Foster A-24

Chippewa NATIONAL FOREST

CORNERS OF THE PUBLIC SURVEY

T. 141+142 NR. 29 W STA Mer.

$\frac{1}{16}$ Corner common to Sections
36, and 1

Corner consists of a Brcapli" pipe (not) in place

State condition Good

Dimensions above ground 6" inches

Sketch grooves, letters, figures, or notches, on proper face or edge.

CARDINAL POSITION

DIAGONAL POSITION

N	W	S	E

NW	SW	SE	NE

Mound of _____ is located _____

Pits are located _____

Sketch markings of Bearing Trees (or Rocks) in proper box and fill blanks below, giving bearings from Corner to Trees and Distances in Links.

E 1/2
S 1/2

E 1/2
S 36

BT

BT

Species Cedar dead Diach

Diameter 18 INCH 18 INCH

Bearing 210 N 61° E

Distance 20.2 LKS 23.9 LKS

Do you believe this to be a genuine Land Office Corner? _____

If not, why? _____

Daniel Rose

Mar. 29, 1935
(Date)

Estimator
(Title)

A-24

E 1/534
N 1/6535

Corner again.

Give any further facts which will aid in finding this

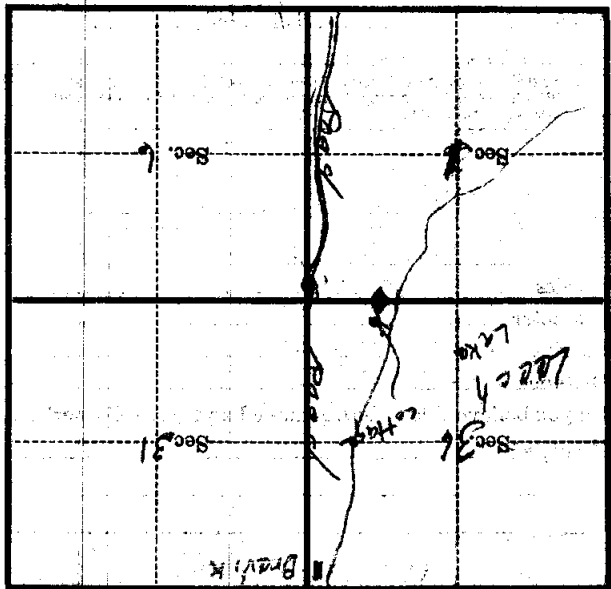
20.2115 chains distant.

from which this Corner bears N 33 E

side of Tree

tree 18 inches diameter, on the NE

Metal Location Poster is on a



(Make sketch of topography near Corner)

1-24
Mer.

575

T. 1410 142N R. 29W