

U. S. Department of Agriculture  
FOREST SERVICE

Poster A-24

Chippewa NATIONAL FOREST

CORNERS OF THE PUBLIC SURVEY

T. 141 + 142 NR. 29 W STA Mer.

1/6 Corner common to Sections  
36, and 1

Corner consists of a Br. cap pipe (not) in place  
State condition good

Dimensions above ground 6" inches

Sketch grooves, letters, figures, or notches, on proper face or edge.

CARDINAL POSITION

DIAGONAL POSITION

N	W	S	E	NW	SW	SE	NE

Mound of \_\_\_\_\_ is located \_\_\_\_\_

Pits are located \_\_\_\_\_

Sketch markings of Bearing Trees (or Rocks) in proper box and fill blanks below, giving bearings from Corner to Trees and Distances in Links.

<u>ETA</u> <u>51</u>	<u>E 1/2</u> <u>536</u>		
<u>BT</u>	<u>BT</u>		

Species cedar dead birch

Diameter 15 inches 18 inches

Bearing S 42° W N 61° E

Distance 20.2 links 23.9 links

Do you believe this to be a genuine Land Office Corner? \_\_\_\_\_

If not, why? \_\_\_\_\_

Daniel Rose  
(Signature)

Mar. 29, 1935  
(Date)

Estimator  
(Title)

A-24

7-11-33  
16.535

Corner again.

Give any further facts which will aid in finding this

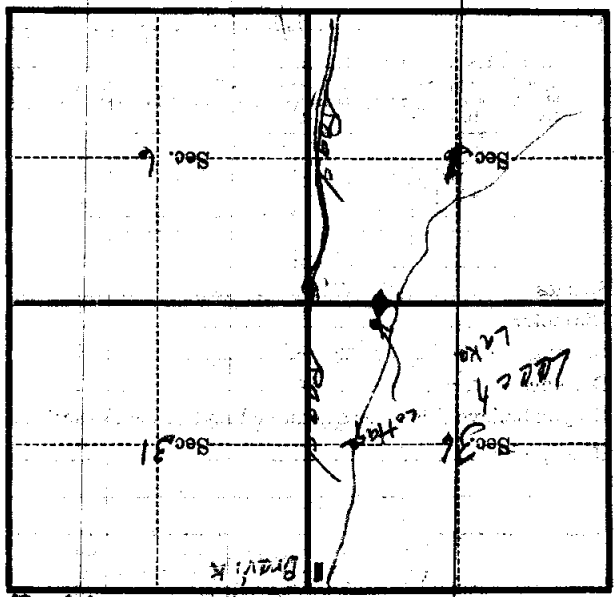
20.2115 chains distant.

from which this Corner bears N 38 E

side of

tree 18 inches diameter, on the NE

Metal Location Poster is on a



(Make sketch of topography near Corner)

Mer. 575

T. 1918 142 N R. 29 W