

U. S. Department of Agriculture

FOREST SERVICE

*E-21*  
*shaded*  
*Posted*

Chippewa NATIONAL FOREST

CORNERS OF THE PUBLIC SURVEY

T. 141 R. 28 5 Mer.

Section Corner common to Sections

1, 2, 11, and 12

Corner consists of a 1" iron pipe w/ brass cap (not) in place

State condition Good

Dimensions above ground 36 inches

Sketch grooves, letters, figures, or notches, on proper face or edge.

CARDINAL POSITION

DIAGONAL POSITION

--	--	--	--

N W S E

--	--	--	--

NW SW SE NE

Mound of is located

Pits are located

Sketch markings of Bearing Trees (or Rocks) in proper box and fill blanks below, giving bearings from Corner to Trees and Distances in Links.

	No	B. T. S.	

Species

Diameter

Bearing

Distance

Do you believe this to be a genuine Land Office Corner? Yes

If not, why?

*H. E. Altman*  
H. E. ALTMAN  
(Signature)

9/2/36  
(Date)

Assistant Ranger  
(Title)

Corner marker has apparently been removed from center of Highway and now leans against F.S. Section line marker.

Corner again.

Give any further facts which will aid in finding this

the post.

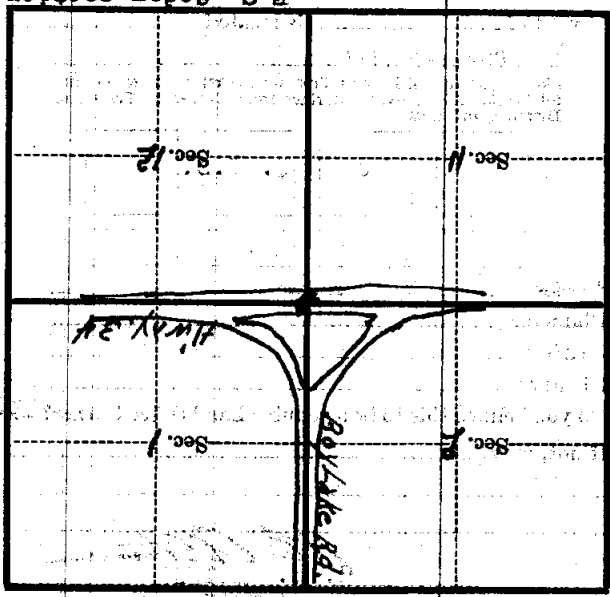
from which this Corner ~~marker~~ leans against

side of Highway # 34

tree 6 inches diameter, on the South

Metal Location Poster is on a line marker.

F.S. Cedar section



(Make sketch of topography near Corner)