

U. S. Department of Agriculture

FOREST SERVICE

Chip. Pyr.

NATIONAL FOREST

Plotted P-17

CORNERS OF THE PUBLIC SURVEY

T. 1A1 R. 28 Mer. 5th

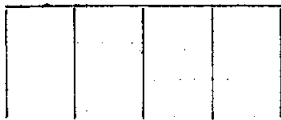
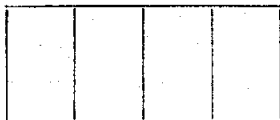
1A Corner common to Sections 22, and 23

Corner consists of a Pipe and Cap in place
State condition Good

Dimensions above ground 8 inches
Sketch grooves, letters, figures, or notches, on proper face or edge.

CARDINAL POSITION

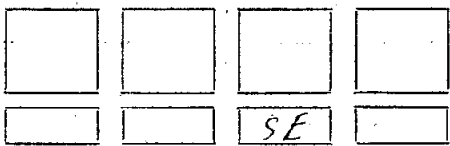
DIAGONAL POSITION



Mound of _____ is located _____

Pits are located _____

Sketch markings of Bearing Trees (or Rocks) in proper box and fill blanks below, giving bearings from Corner to Trees and Distances in Links.



Species _____ Norway _____

Diameter _____ 15" _____

Bearing _____ S20°E _____

Distance _____ 0.55 ch. _____

Do you believe this to be a genuine Land Office Corner? Yes

If not, why? U.S. G.O. 1918

3/15/35
(Date)

O. M. Leonard
(Signature)

P-17

Corner again.

Give any further facts which will aid in finding this

2 chains distant.

from which this Corner bears

South

side of

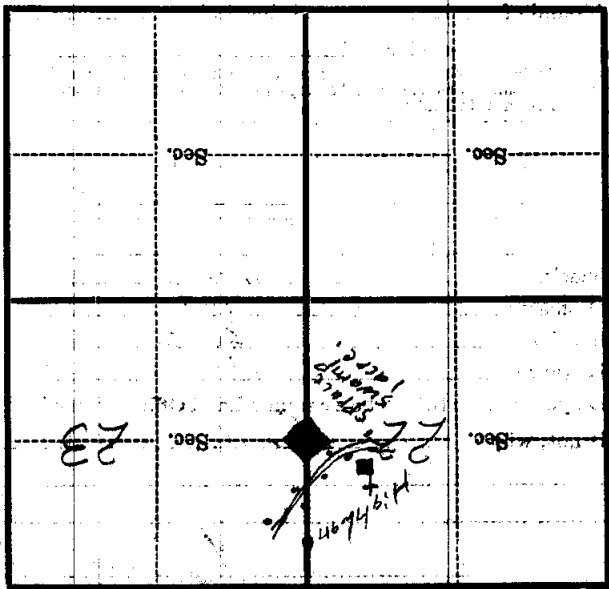
24 STATE ROAD

inches diameter, on the

South

Metal Location Poster is on a

T.P.



(Make sketch of topography near Corner)

T. 141 R. 28 5th Mer. P-17