

U. S. Department of Agriculture
FOREST SERVICE

Chip Purchase NATIONAL FOREST *15*

CORNERS OF THE PUBLIC SURVEY

T. *1A1* R. *28* Mer. *5th*

1/4 Corner common to Sections

22, and *27*

Corner consists of a *Pipe and Cap* in place

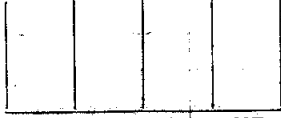
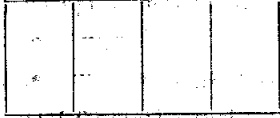
State condition *Good*

Dimensions above ground *7* inches

Sketch grooves, letters, figures, or notches, on proper face or edge.

CARDINAL POSITION

DIAGONAL POSITION



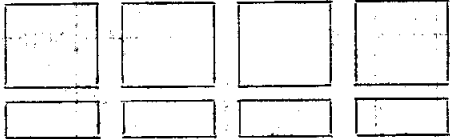
N W S E

NW SW SE NE

Mound of _____ is located _____

Pits are located _____

Sketch markings of Bearing Trees (or Rocks) in proper box and fill blanks below, giving bearings from Corner to Trees and Distances in Links.



Species _____

Diameter _____

Bearing _____

Distance _____

Do you believe this to be a genuine Land Office Corner? *Yes*

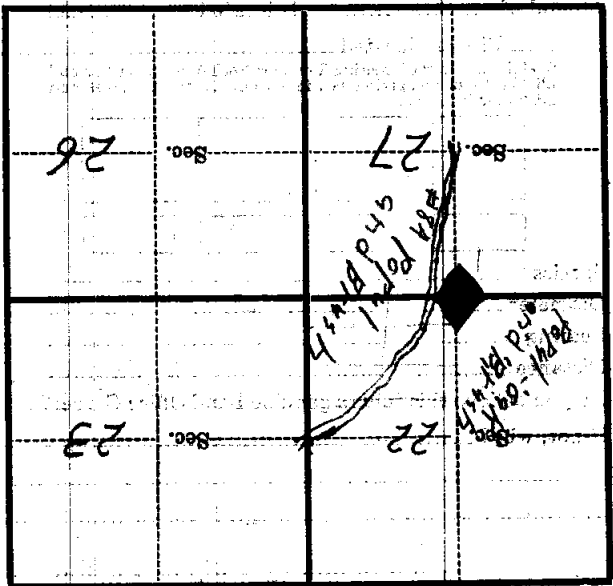
If not, why? _____

3/15/35 *O. G. Pearson*
(Date) (Signature)

Corner again.
Transit line across #84
on which this corner bears
N 78° W. 3.62 ch. Distance
from center of road.
Corner located in small
swamp or pocket.

Give any further facts which will aid in finding this
chains distant.

from which this corner bears
side of #84 State Road
inches diameter, on the East
Metal Location Poster is on a Telephone Pole



(Make sketch of topography near Corner)

T. 1A1 R. 28 6th Mer. K-15