

U. S. Department of Agriculture
FOREST SERVICE

Chip Purchase NATIONAL FOREST

CORNERS OF THE PUBLIC SURVEY

T. 1A1 R. 29/28 5th Mer.

1/4 Corner common to Sections
12, and 7

Corner consists of a Pipe and Cap (not) in place
State condition Good

Dimensions above ground 6 inches
Sketch grooves, letters, figures, or notches, on proper face or edge.

CARDINAL POSITION

DIAGONAL POSITION

--	--	--	--

--	--	--	--

N W S E

NW SW SE NE

Mound of _____ is located _____

Pits are located _____

Sketch markings of Bearing Trees (or Rocks) in proper box and fill blanks below, giving bearings from Corner to Trees and Distances in Links.

Species _____

Diameter _____

Bearing _____

Distance _____

Do you believe this to be a genuine Land Office Corner? Yes

If not, why? _____

3/22/35 C. S. Juward
(Date) (Signature)
G-1 (Title)

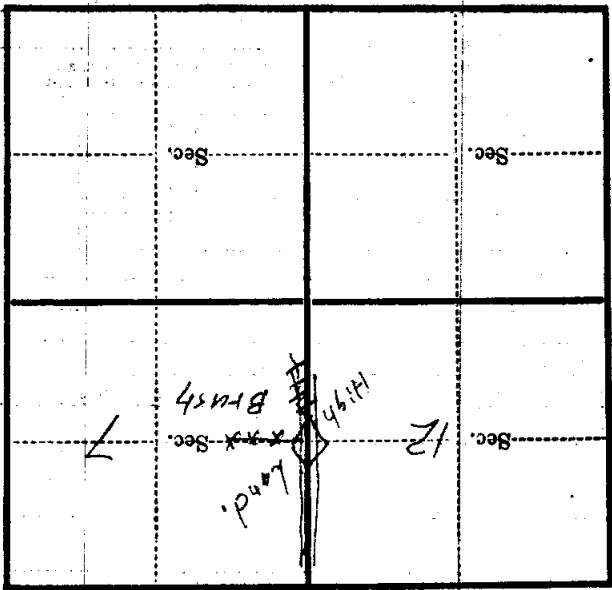
Corner again
Center of Road $\frac{1}{2}$
Chain East of Corner

Give any further facts which will aid in finding this
chains distant.

0.64
from which this Corner bears West

side of Range Line Road
tree inches diameter, on the East

Metal Location Poster is on a
Pencil Post



(Make sketch of topography near Corner)

T 1A1 R. 29/28 5th Mer. 8-1