

U. S. Department of Agriculture
FOREST SERVICE

V-19, 20

Chippewa NATIONAL FOREST

CORNERS OF THE PUBLIC SURVEY

T. 141 R. 27 S. 5 Mer.

No. Corner common to Sections
26, and 35

Corner consists of a stake (~~rod~~) in place

State condition fair

Dimensions above ground 20 inches

Sketch grooves, letters, figures, or notches, on proper face or edge.

CARDINAL POSITION

DIAGONAL POSITION

S 26		S 35	
MC		MC	
N	W	S	E

NW	SW	SE	NE

Mound of is located

Pits are located

Sketch markings of Bearing Trees (or Rocks) in proper box and fill blanks below, giving bearings from Corner to Trees and Distances in Links.

MC S 26	MC S 35		
B.T.	B.T.		

Species Aspen Aspen

Diameter 6" 8"

Bearing S 85° E S 70° E

Distance 9 19

Do you believe this to be a genuine Land Office Corner? NO

If not, why? Co. Corner

Raymond T. Defant
RAYMOND T. DEFANT
(Signature)

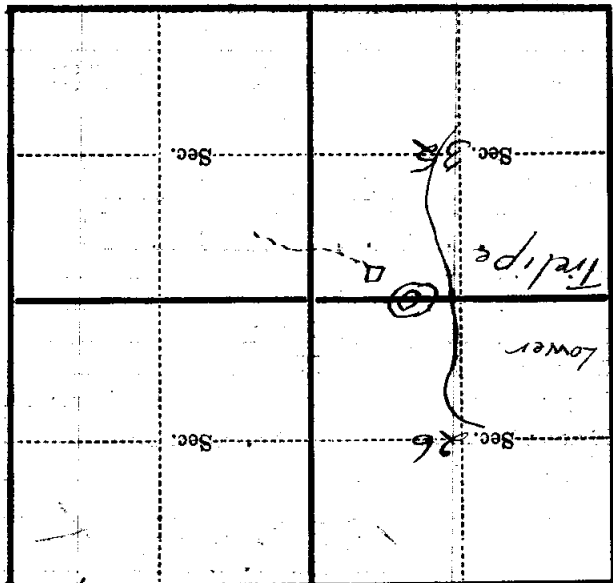
7-3-40
(Date)

Jr. Civil Engineer
(Title)

Corner again.
 Corner is between lake and large
 rock at end of Buel's clearing.

Give any further facts which will aid in finding this
 chains distant.

21
 from which this Corner bears
 N 75° W
 side of
 tree
 tree 10 inches diameter, on the East
 Metal Location Poster is on a Aspen



(Make sketch of topography near Corner)