

U. S. Department of Agriculture
FOREST SERVICE

V-21

CHIPPENAW NATIONAL FOREST

CORNERS OF THE PUBLIC SURVEY

T. 141 R. 27 5 Mer.

Section Corner common to Sections

25, 26, 35, and 36

Corner consists of a pipe (set) in place

State condition good

Dimensions above ground 20 inches

Sketch grooves, letters, figures, or notches, on proper face or edge.

CARDINAL POSITION

DIAGONAL POSITION

N	W	S	E

NW	SW	SE	NE

Mound of is located

Pits are located

Sketch markings of Bearing Trees (or Rocks) in proper box and fill blanks below, giving bearings from Corner to Trees and Distances in Links.

S 25	S 26	S 35	S 36
B.T.	B.T.		

Species Maple Aspen Elm Basswood

Diameter 15" 24" 5" 10"

Bearing East S45°E S45°W N60°W

Distance 8 24 18 22

Do you believe this to be a genuine Land Office Corner? No

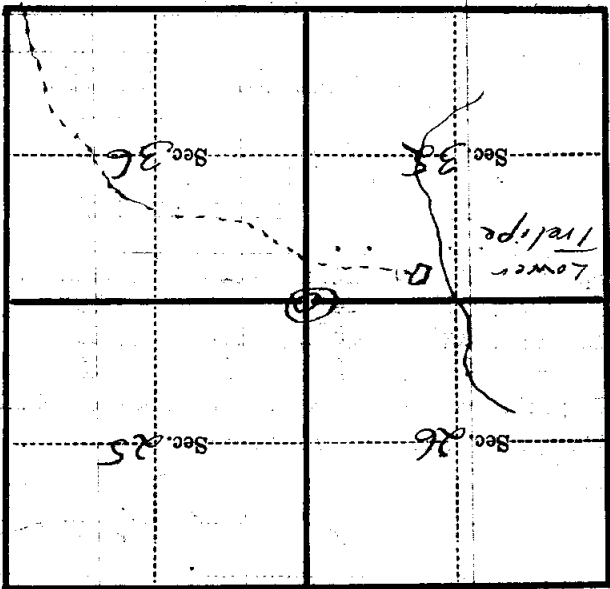
If not, why? County Corner

R. T. Defant
RAYMOND T. DEFANT
(Signature)

Jr. Civil Engineer
(Title)

7-3-40
(Date)

Metal Location Poster is on a **Maple B.T.**
 tree **15** inches diameter, on the **West**
 side of **tree**
 from which this Corner bears **West**
8 chains distant.
 Give any further facts which will aid in finding this
 Corner again.
S. Line crosses trail at gate.



(Make sketch of topography near Corner)