

U. S. Department of Agriculture  
FOREST SERVICE

*R-17*  
*Post 11/24*

Chippewa NATIONAL FOREST

CORNERS OF THE PUBLIC SURVEY

T. 141 R. 27 5 Mer.

Sec. \_\_\_\_\_ Corner common to Sections  
22, 23, 26, and 27

Corner consists of a post (not) in place

State condition good

Dimensions above ground 24" inches

Sketch grooves, letters, figures, or notches, on proper face or edge.

CARDINAL POSITION

DIAGONAL POSITION


<u>22</u>	<u>27</u>	<u>26</u>	<u>23</u>

N W S E

NW SW SE NE

Mound of \_\_\_\_\_ is located \_\_\_\_\_

Pits are located \_\_\_\_\_

Sketch markings of Bearing Trees (or Rocks) in proper box and fill blanks below, giving bearings from Corner to Trees and Distances in Links.

T141r			
R27W			
S22			
B. T.			

Species Tan.

Diameter 8"

Bearing N15W

Distance .44

Do you believe this to be a genuine Land Office Corner? no

If not, why? Co. Corner

*R. Defant*  
R. Defant  
(Signature)

11-6-40  
(Date)

J. E.  
(Title)

Post in center of logging road  
line one mile north

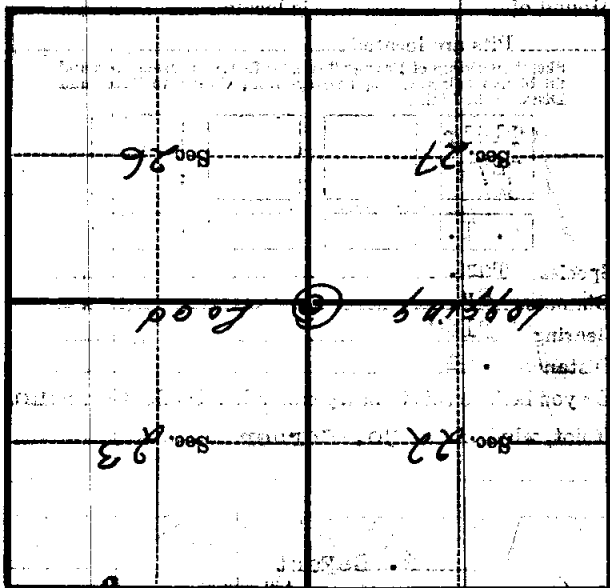
Corner again.

Give any further facts which will aid in finding the  
chains distant.

from which this corner bears  
side of

tree inches diameter, on the

Metal Location Poster is on a



Take sketch of topography near corner

R-17  
Mer.

R.

T.