

Form 874-0—Revised May, 1918
U. S. Department of Agriculture
FOREST SERVICE

T-9

Chippewa NATIONAL FOREST

CORNERS OF THE PUBLIC SURVEY

T. 141 N R. 27 W 5th. Mer.
Quarter

Corner common to Sections
28, and 29

Corner consists of a Iron pipe with brass cap (how in place)

State condition Good

Dimensions above ground _____ inches

Sketch grooves, letters, figures, or notches, on proper face or edge.

CARDINAL POSITION

DIAGONAL POSITION

--	--	--	--

N W S E

--	--	--	--

NW SW SE NE

Mound of _____ is located _____

Pits are located _____

Sketch markings of Bearing Trees (or Rocks) in proper box and fill blanks below, giving bearings from Corner to Trees and Distances in Links.

Species No Witness Trees

Diameter _____

Bearing _____

Distance _____

Do you believe this to be a genuine Land Office Corner? _____

If not, why? _____

J. J. Koskela

(Signature)

Jan 7, 1936

Jr. Forester P-1

(Date)

(Title)

Corner again.

Give any further facts which will aid in finding this

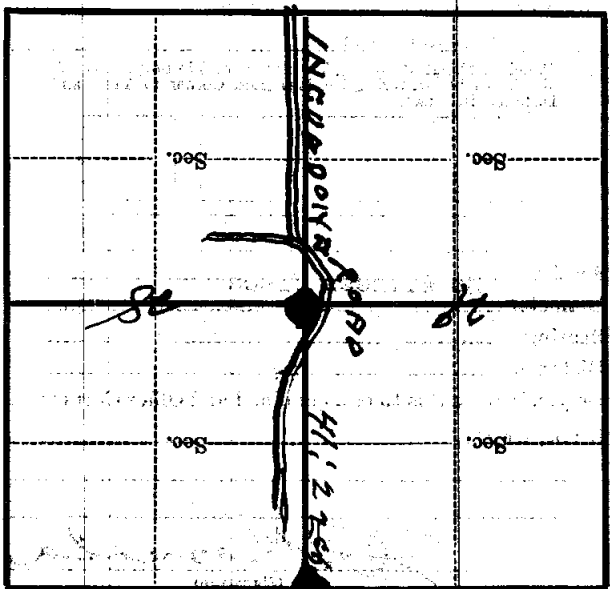
chains distant.

from which this Corner bears

side of

tree inches diameter, on the

Metal Location Poster is on a



(Make sketch of topography near Corner)

T. 141 N. R. 27 W. S. 4. Mer. 1-9