

U. S. Department of Agriculture  
FOREST SERVICE

A-25

CHIPPEWA NATIONAL FOREST

CORNERS OF THE PUBLIC SURVEY

T. 141 N R. 26 W 5th Mer.

Section Corner common to Sections

36, 30, 1, and 6

Corner consists of a post ~~200~~ in place

State condition fair

Dimensions above ground 30" inches

Sketch grooves, letters, figures, or notches, on proper face or edge.

CARDINAL POSITION

DIAGONAL POSITION

--	--	--	--

N W S E

T142 R26 S. 36	T141 R26 S. 1	T141 R25 S. 6	T142 R26 S. 30
-------------------------	------------------------	------------------------	-------------------------

NW SW SE NE

Mound of \_\_\_\_\_ is located \_\_\_\_\_

Pits are located \_\_\_\_\_

Sketch markings of Bearing Trees (or Rocks) in proper box and fill blanks below, giving bearings from Corner to Trees and Distances in Links.

none	3-31 142- 25	36 141- 25	51 141- 26

Species Tom Tom Tom  
 Diameter 8 6" 6"  
 Bearing N45E S70E S85W  
 Distance 23 23 42

Do you believe this to be a genuine Land Office Corner? Yes

If not, why? \_\_\_\_\_

Harrison Adams

(Signature)

CCC Ass't Leader

1/31/36

(Date)

(Title)

There are three lines blazed,  
one South, one East, one West,  
with north 25° West

Corner again.

Give any further facts which will aid in finding this

23 chains distant.

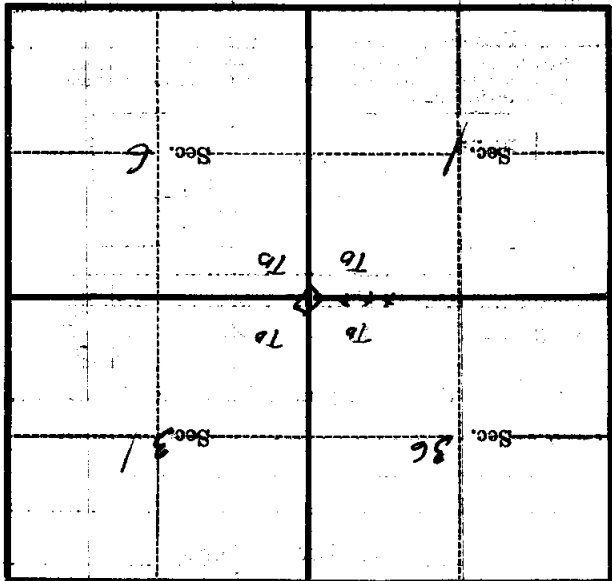
from which this Corner bears

S 45° W

side of Tree

tree 6 inches diameter, on the S.W.

Metal Location Poster is on a Tamarack



(Make sketch of topography near Corner)

U. S. Department of Agriculture  
FOREST SERVICE

P  
A-25  
~~2-25~~

Chippewa NATIONAL FOREST

CORNERS OF THE PUBLIC SURVEY

T. 141+142N R. 25+26 5<sup>th</sup> Mer.

Section Corner common to Sections

36, 31, 6, and 1

Corner consists of a Oak stake (~~not~~) in place

State condition Fair

Dimensions above ground 4x4x30 inches

Sketch grooves, letters, figures, or notches, on proper face or edge.

CARDINAL POSITION

DIAGONAL POSITION

T			

T142N	T141N	T141N	T142N
R26W	R26	R25W	R25W
536	531	56	531

N W S E

NW SW SE NE

Mound of \_\_\_\_\_ is located \_\_\_\_\_

Pits are located \_\_\_\_\_

Sketch markings of Bearing Trees (or Rocks) in proper box and fill blanks below, giving bearings from Corner to Trees and Distances in Links.


Species None

Diameter \_\_\_\_\_

Bearing \_\_\_\_\_

Distance \_\_\_\_\_

Do you believe this to be a genuine Land Office Corner? Yes

If not, why? \_\_\_\_\_

Dorman J. Sutton

(Signature)

2-27-35  
(Date)

Engineer  
(Title)

Corner again.  
Give any further facts which will aid in finding this

chains distant.

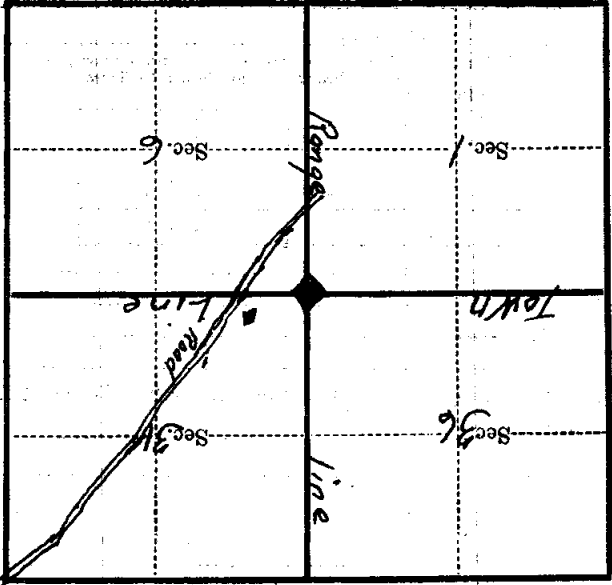
24

from which this Corner bears S 42° W

side of tree

tree 4 inches diameter, on the S W

Metal Location Poster is on a Town



(Make sketch of topography near Corner)

T. 141 + 142 N. R. 25 + 26 W. 5th Mer.

Form 874-9—Revised May, 1918  
U. S. Department of Agriculture  
FOREST SERVICE

A-25  
~~25~~

Chippewa NATIONAL FOREST

CORNERS OF THE PUBLIC SURVEY

T. 141-142 R. 25-26 5<sup>th</sup> Mer.

Section Corner common to Sections

36, 31, 6, and 1

Corner consists of a oak Stake (not) in place

State condition Fair

Dimensions above ground 4x4x30 inches

Sketch grooves, letters, figures, or notches, on proper face or edge.

CARDINAL POSITION

DIAGONAL POSITION

--	--	--	--

N W S E

T142N	T141N	T141N	T142N
R26W	R26	R25	R25W
536	51	56	531

NW SW SE NE

Mound of \_\_\_\_\_ is located \_\_\_\_\_

Pits are located \_\_\_\_\_

Sketch markings of Bearing Trees (or Rocks) in proper box and fill blanks below, giving bearings from Corner to Trees and Distances in Links.


Species None

Diameter \_\_\_\_\_

Bearing \_\_\_\_\_

Distance \_\_\_\_\_

Do you believe this to be a genuine Land Office Corner? Yes

If not, why? \_\_\_\_\_

D. Sutton

(Signature)

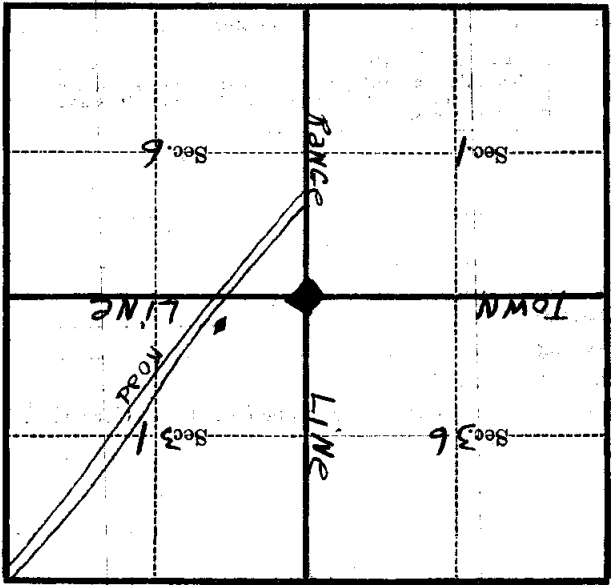
Engineer

(Title)

2-27-35

(Date)

Metal Location Poster is on a **T.M.**  
 tree **4** inches diameter, on the **SW**  
 side of **tree**  
 from which this Corner bears **S42W**  
**24** chains distant.  
 Give any further facts which will aid in finding this  
 Corner again.



(Make sketch of topography near Corner)

T. 141-142 R. 25-26 S. 14 Mer.