

U. S. Department of Agriculture

FOREST SERVICE

V-25

CHIPPEWA NATIONAL FOREST

CORNERS OF THE PUBLIC SURVEY

T. 141 R. 26 5 Mer.

Sec.

Corner common to Sections

25, 36, 30, and 31

Corner consists of a pipe (not) in place

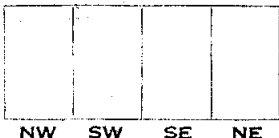
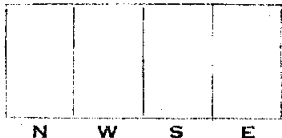
State condition good

Dimensions above ground 20" inches

Sketch grooves, letters, figures, or notches, on proper face or edge.

CARDINAL POSITION

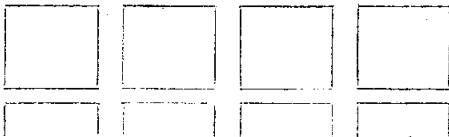
DIAGONAL POSITION



Mound of is located

Pits are located

Sketch markings of Bearing Trees (or Rocks) in proper box and fill blanks below, giving bearings from Corner to Trees and Distances in Links.



Species

Diameter

Bearing

Distance

Do you believe this to be a genuine Land Office Corner? No

If not, why? Co. Corner

R. Defant

(Signature)

J. E.

(Title)

7-2-40

(Date)

Corner is on south side of ditch road

Corner again.

Give any further facts which will aid in finding this

chains distant.

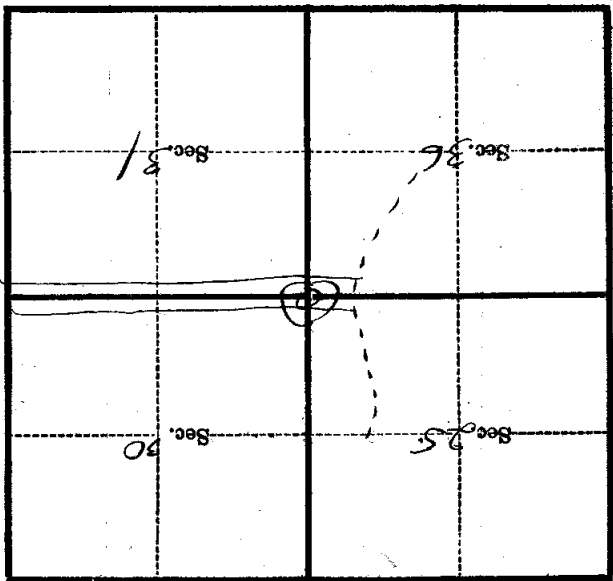
.02

from which this Corner bears North

side of tree

tree 3 inches diameter, on the North

Metal Location Poster is on a Aspen



(Make sketch of topography near Corner)

U. S. Department of Agriculture

FOREST SERVICE

V-25

~~CHIPPENAW~~ NATIONAL FOREST

CORNERS OF THE PUBLIC SURVEY

T. 141 R. 26 5 Mer.

30c. Corner common to Sections

25, 36, 30, and 31

Corner consists of a pipe (not) in place

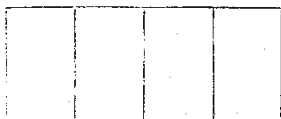
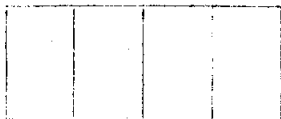
State condition good

Dimensions above ground 20" inches

Sketch grooves, letters, figures, or notches, on proper face or edge.

CARDINAL POSITION

DIAGONAL POSITION



Mound of _____ is located _____

Pits are located _____

Sketch markings of Bearing Trees (or Rocks) in proper box and fill blanks below, giving bearings from Corner to Trees and Distances in Links.



Species _____

Diameter _____

Bearing _____

Distance _____

Do you believe this to be a genuine Land Office Corner? **No**

If not, why? Co. Corner

R. Defant

(Signature)

R. E.

(Title)

7-2-40
(Date)

Corner is on south side of ditch road

Corner again.

Give any further facts which will aid in finding this

chains distant.

08

from which this Corner bears North

tree

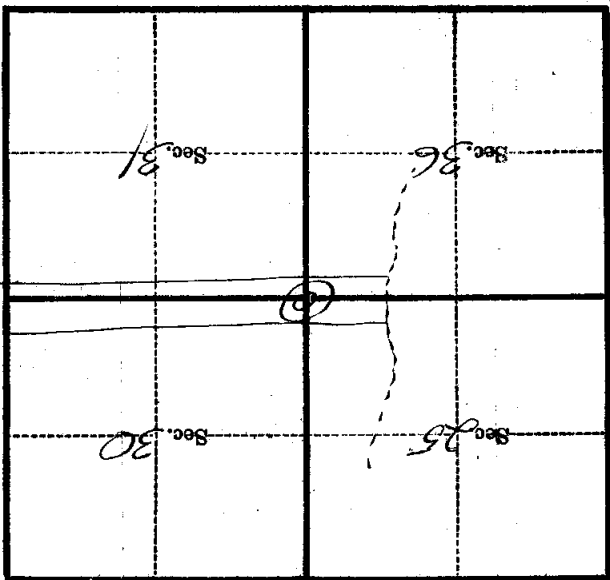
side of

tree inches diameter, on the

North

Metal Location Poster is on a

Aspen



(Make sketch of topography near Corner)